

Nos. 012

Noda-numa pond near Lake Biwa, Shiga Pref., Japan. [36°26.898' N, 136°12.042' E]

EC: 155, pH: 7.4.

Date: 18/iv/2000.

Coll. A. Tuji (duplicate of TNS-AL-56304m in TNS).

Cyclostephanos tholiformis Stoermer, Håk. et E.C.Ther., Br. Phycoll. J. **22**: 352. f. 7-17. 1987.

(figs 1-3)

Type locality: planktonic in Lazy Lagoon, Lake West Okoboji, Iowa, USA.

Holotype: Slide No. ANSP A-GC. 63787.

Ecology: indifferent. This ecological information might be confused with other similar taxa.

Aulacoseira ambigua f. *japonica* (F.Meister) Tuji et D.M.Williams, Bull. Natl. Mus. Nat. Sci. Tokyo ser. B. **33**: 69-70. 2007.

≡ *Melosira japonica* F.Meister, Archiv f. Hydrobiol. **8**: 311. f. 1. 1913. later homonym.

non: *Melosira japonica* Pant. Beitr. Kenntn. Foss. Bacill. Ungarns **3**: 62. 1905. pl. 4. f. 63. pl. 8. f. 137. 1892.

(Figs 4-5)

Lectotype: Slide BRM "A3/57", designated by Tuji et D.M.Williams, Bull. Natl. Mus. Nat. Sci. Tokyo ser. B. **33**: 70. f. 4. 2007.

Isotype: Slide no. 801 of Tempère et Peragallo (2nd edition), BM69152.

Type locality: Lake Suwa, Nagano Pref., Japan.

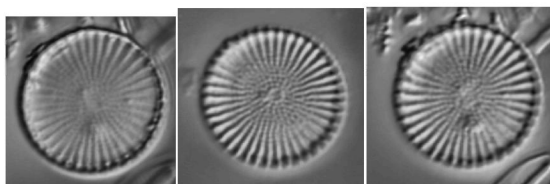
Ecology: The nominate forma is indifferent taxon. This forma seems to appear in more polluted water than nominate forma (Tuji pers. obs.).

Navicula cryptocephala Kutz., Bacill. 95. pl. 3. f. xx, xxvi. 1844.

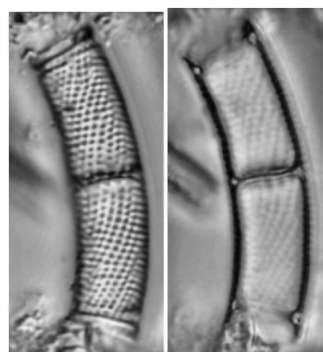
(Fig. 6)

Lectotype: Kützing packet 459; BM 18785, designated by R.M.Patrick in Patrick & Reimer, Diat. United States 503; micrographs in Cox, Diat. Res. **10**: 108-109. f. 23. 1995.

Ecology: indifferent, pH-circumneutral.



1-3



4-5



6