

**Nos. 018**

Ryujin hot spa, Totsugawa, Nara Pref., Japan.

[33°58' N, 135°34' E from a map]

pH: 8.5, EC: 1600, WT: 40.

Date: 26/iii/1996.

Coll. T. Watanabe (duplicate of TNS-AL-TW-12435 in TNS).

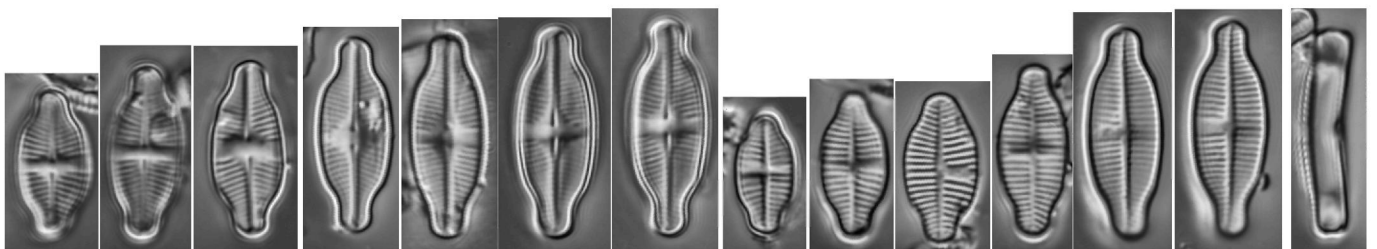
*Achnantheidium exile* (Kütz.) Heib., Consp. Diat. Dan. 119. 1863.

≡ *Stauroneis exilis* Kütz., Bacill. 105. pl. 30, f. 21. 1844.

≡ *Achnantheidium exiguum* (Grunow) Czarn., Proc. Int. Diat. Symp. 11: 157. 1994.

(Figs 1-14)

Ecology: saproxenous, rare.



1-7

8-13

14