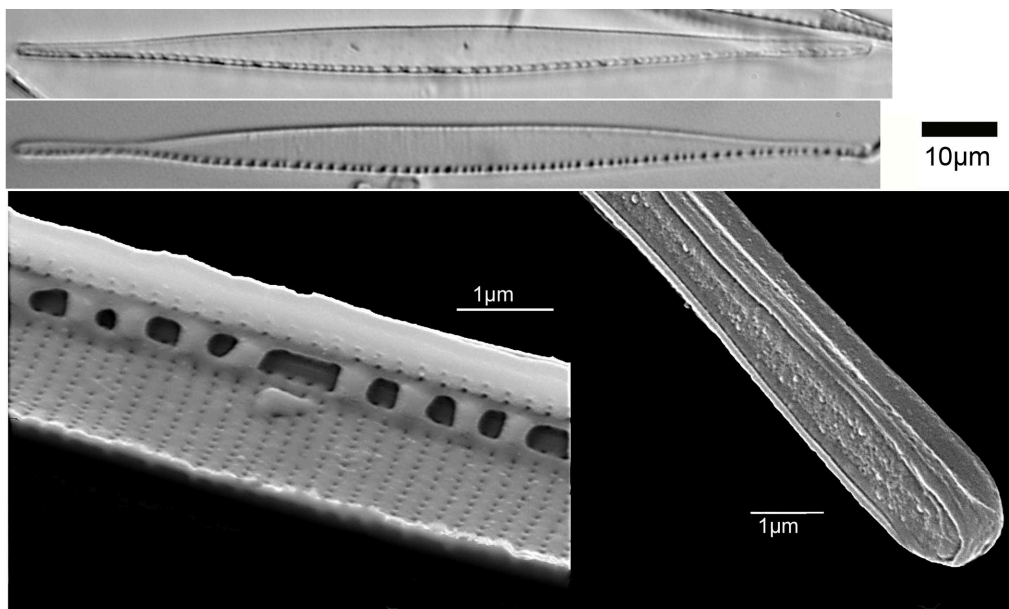


Nos. 58.

Prepared from TNS-AL-56529 in TNS. This culture strain was prepared from TNS-AL-56374 in TNS. Lake Kitaura, Ibaraki Pref. Coll. A. Tuji 13/iii/08.

Nitzschia draveillensis M.Coste & Ricard, Cryptog. Alg. **3**: 190. *pl. 2. f. 32. pl. 10. f. 70, 73-74.* 1980.

**Nos. 59.**

Prepared from TNS-AL-56531 in TNS. This culture strain was prepared from TNS-AL-56371 in TNS. Lake Kasumigaura, Ibaraki Pref. Coll. A. Tuji 10/iii/08.

Nitzschia draveillensis M.Coste & Ricard, Cryptog. Alg. **3**: 190. *pl. 2. f. 32. pl. 10. f. 70, 73-74.* 1980.

