

No. 123

Prepared from strain Ak1155 (voucher specimens: TNS-AL-62155 in TNS). This culture strain was prepared from a specimen (TNS-AL-57998 in TNS) found in the Nyu River, Nara Pref., Japan. Coll. A. Tuji, 2/iv/2014.

Geissleria pusilla Tuji sp. nov.

(Fig. 1-6)

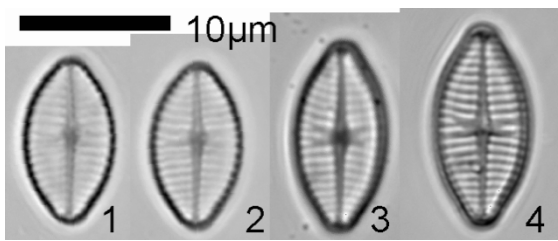
Valves broadly elliptical with sometimes shortly protracted, subcapitate and obtusely rounded poles, length 11-14 μ m, width 6.5-7.0 μ m. Sternum linear, narrow, central area small, formed by regularly alternating shorter and longer striae. Simple stigma adjacent to central nodule. Striae radiate at centre of valve, becoming parallel towards poles, 14-18 in 10 μ m. Puncta rectangular throughout.

Similar to *Geissleria modica* (Hust.) C.E.Wetzel et al. and *G. aikenensis* (Patrick) Torgan et M.A.Oliveira but differ from both by the parallel striae near valve poles. Distinguished from *G. bourbonensis* Le Cohu et al. by the shape of the puncta.

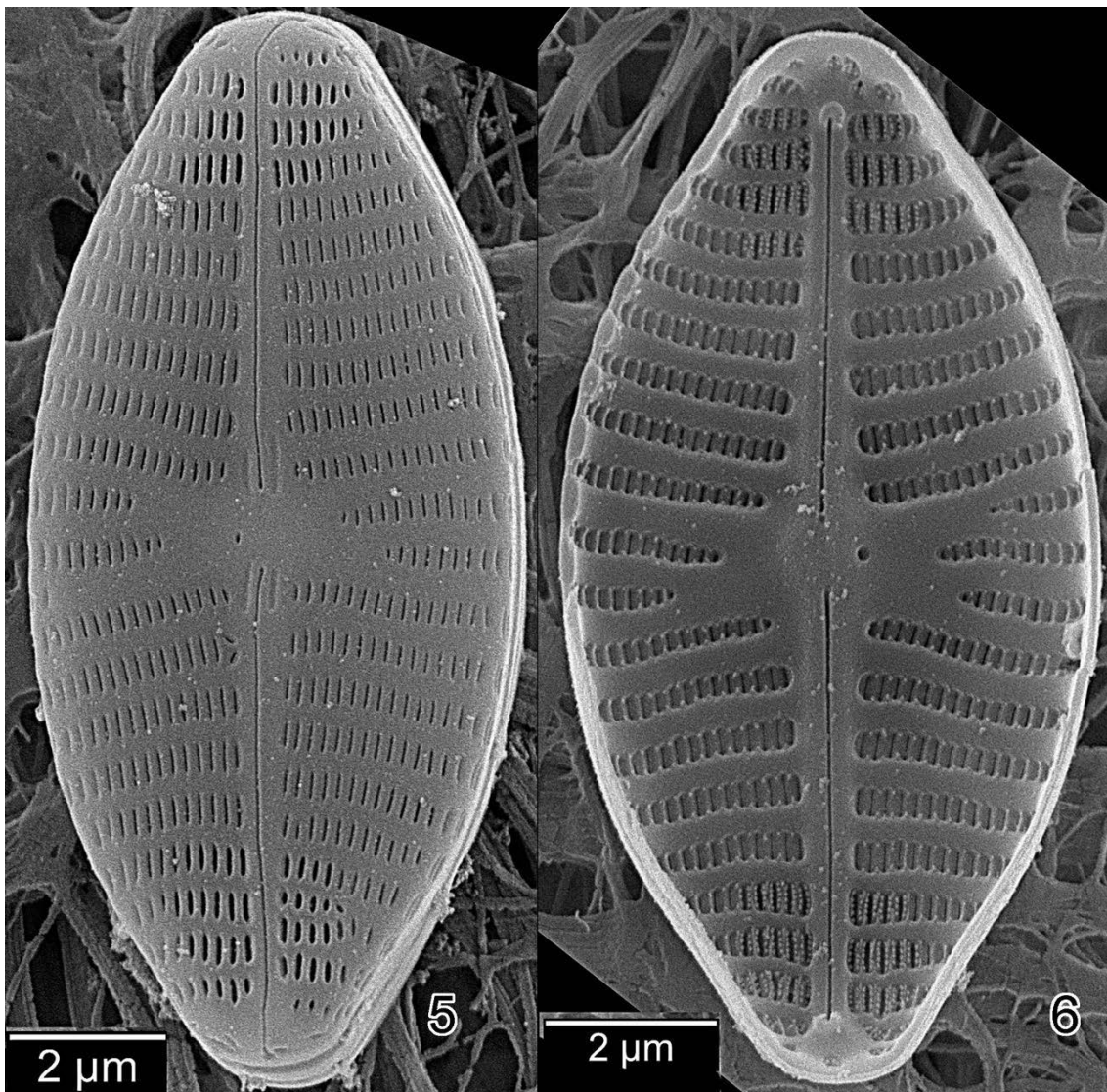
Holotype: slide TNS-AL-62155s in TNS.

Isotype: raw material TNS-AL-62155m and TNS-AL-57998 in TNS; no. 123 in *Algae Aquae Dulcis Japonicae Exsiccatae*. Fasc. 7. 2016.

Type locality: Nyu River, Nara Pref., Japan.



Figs 1-4. *Geissleria pusilla* Tuji sp. nov. (LM).



Figs 5-6. *Geissleria pusilla* Tuji sp. nov. (SEM).