

No. 126

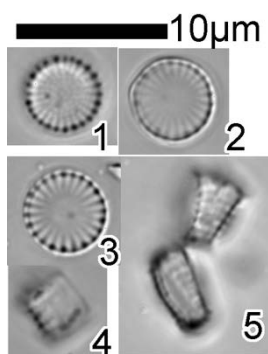
Prepared from strain Ak1144 (voucher specimens: TNS-AL-62044 in TNS). This culture strain was prepared from a specimen (Kasumi1311-9 in TNS) from Lake Kasumigaura, Ibaraki Pref., Japan. Coll. M. Nakagawa, 13/xi/2013.

*Cyclostephanos dubius* (Fricke) Round 1982, p. 326; fig. 7-18.

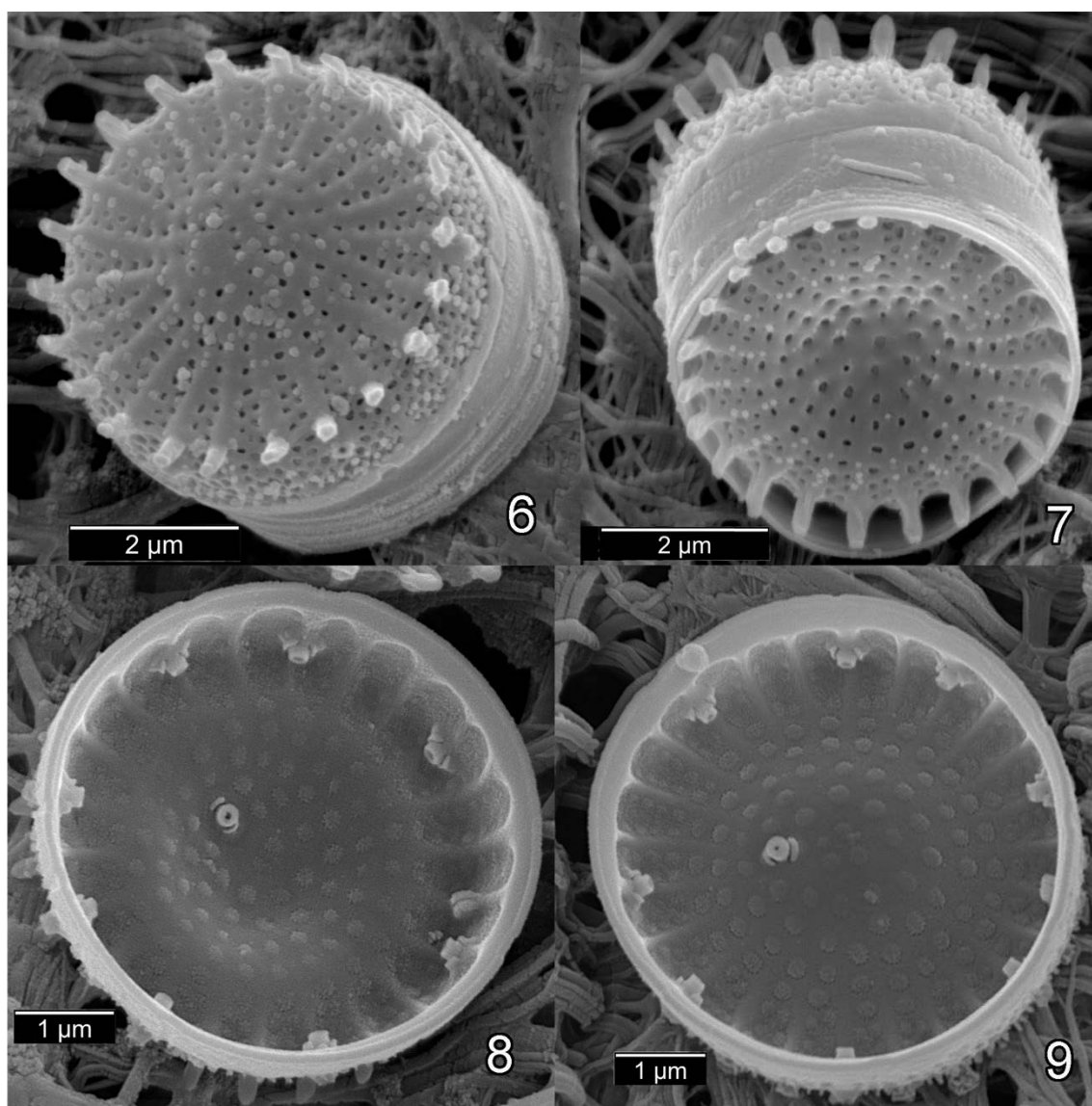
≡ *Cyclotella dubia* Fricke in Schmidt et al. 1900, pl. 222, fig. 23-24.

The field material from Lake Kitaura (near Lake Kasumigaura) (TNS-AL-56374), was reported at no. 26 in previous exsiccata fascicle 2. The character of this strain agree with the field material from Lake Kitaura.

The position of rimportula of this strain exist near valve-mantle junction, and differ from the specimen from Lake Biwa (Tuji & Houki, 2001).



Figs 1-5. *Cyclostephanos dubius* (LM).



Figs 6-9. *Cyclostephanos dubius* (SEM).