

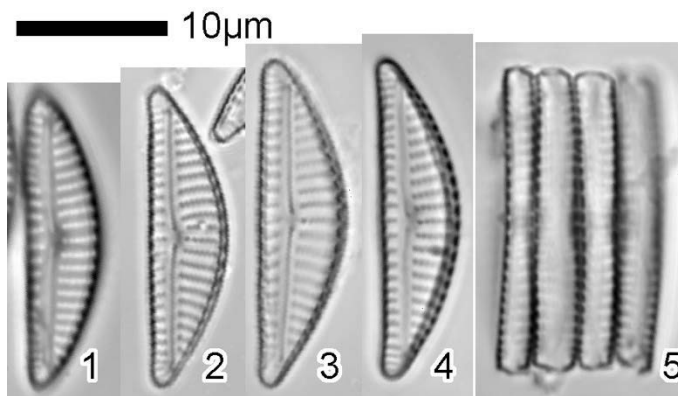
No. 130

Prepared from strain Ak1105 (voucher specimens: TNS-AL-62105 in TNS).  
This culture strain was prepared from a specimen (TNS-AL-58297) from Lake Yogo,  
Shiga Pref. Coll. A. Tuji 16/ii/14.

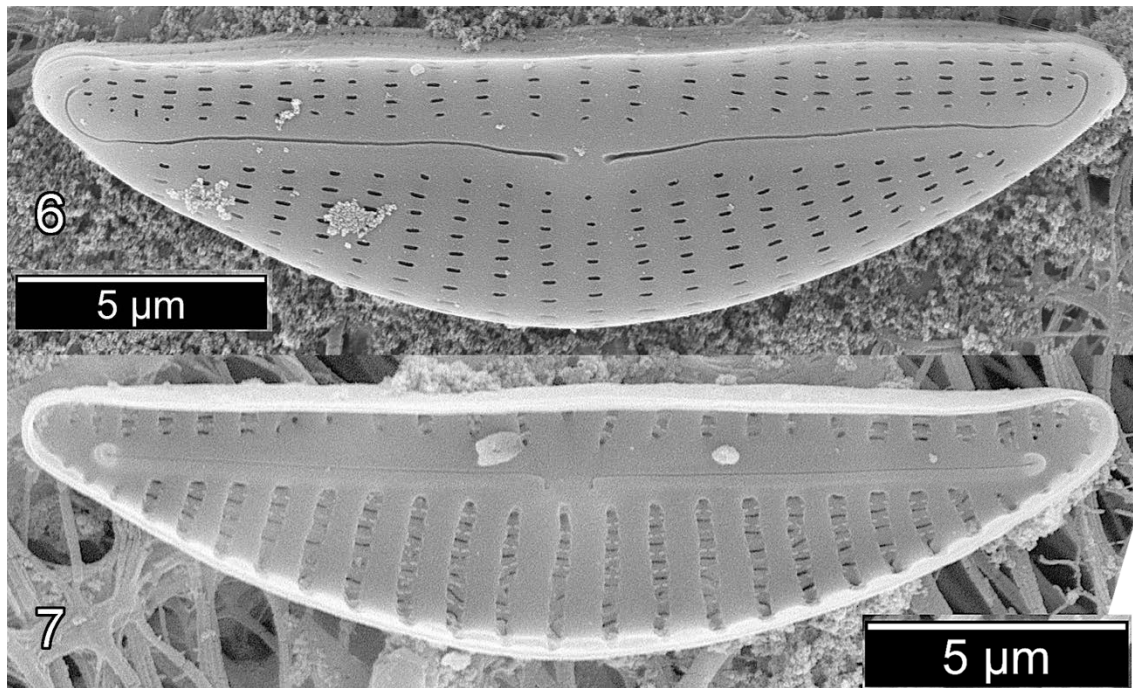
*Encyonema silesiacum* (Bleisch) D.G.Mann in Round et al. 1990, p. 667.

≡ *Cymbella silesiaca* Bleisch in Rabenhorst 1865, no. 1802.

≡ *Cymbella minuta* var. *silesiaca* (Bleisch) Reimer in Patrick & Reimer 1975, p. 49-50;  
pl. 8, fig. 7a-10b.



Figs 1-5. *Encyonema silesiacum* (LM).



Figs 6-7. *Encyonema silesiacum* (SEM).