

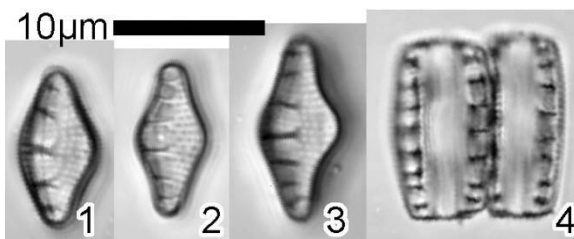
No. 133

Prepared from strain Ak11114 (voucher specimens: TNS-AL-62114 in TNS).  
This culture strain was prepared from a specimen (TNS-AL-61517) from Lake Shikotsu,  
Hokkaido Pref. Coll. A. Tuji 21/xii/13.

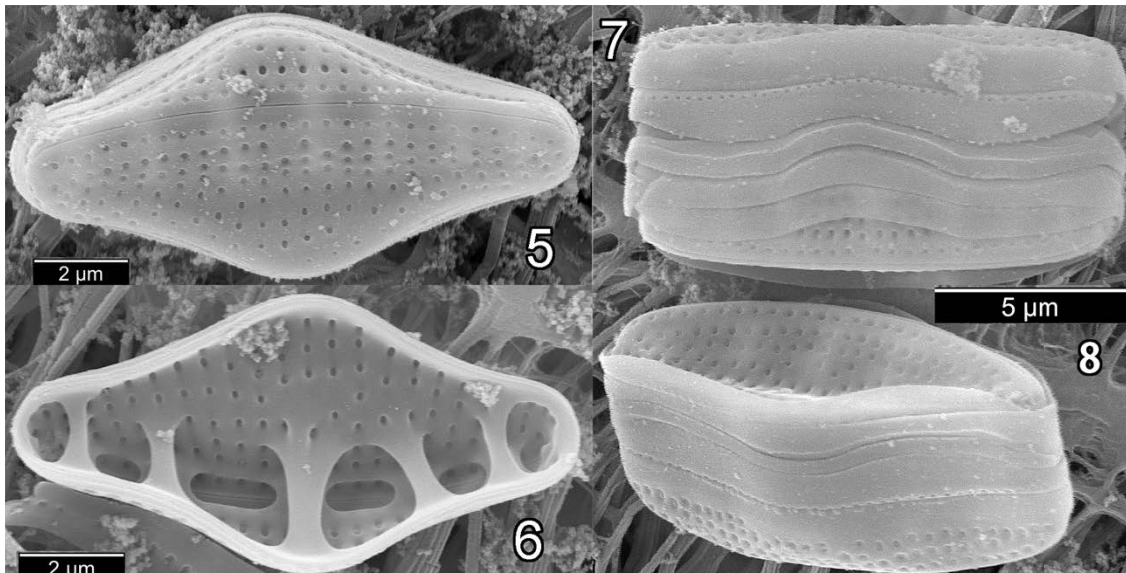
*Nitzschia sinuata* var. *tabellaria* (Grunow) Grunow in Van Heurck 1881, p. 176; pl. 60,  
fig. 12-13.

≡ *Denticula tabellaria* Grunow 1862, p. 548; pl. 28/12, fig. 26.

This taxon has similar morphology with *Nitzschia denticula*. Tuji & Williams  
(2006a) the ultra structure of both taxa.



Figs 1-4. *Nitzschia sinuata* var. *tabellaria* (LM).



Figs 5-8. *Nitzschia sinuata* var. *tabellaria* (SEM).