

No. 140

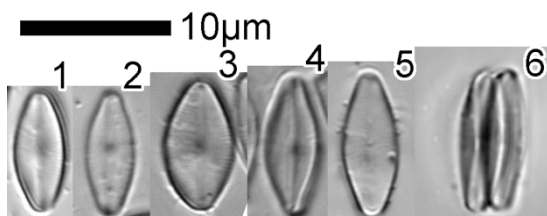
Prepared from strain Ak1136 (voucher specimens: TNS-AL-62136 in TNS). This culture strain was prepared from a sediment sample Yamato-ga cave, Miyako Island, Okinawa Pref., Japan. Coll. A. Tuji, 14/xi/2013.

Nupela sp.

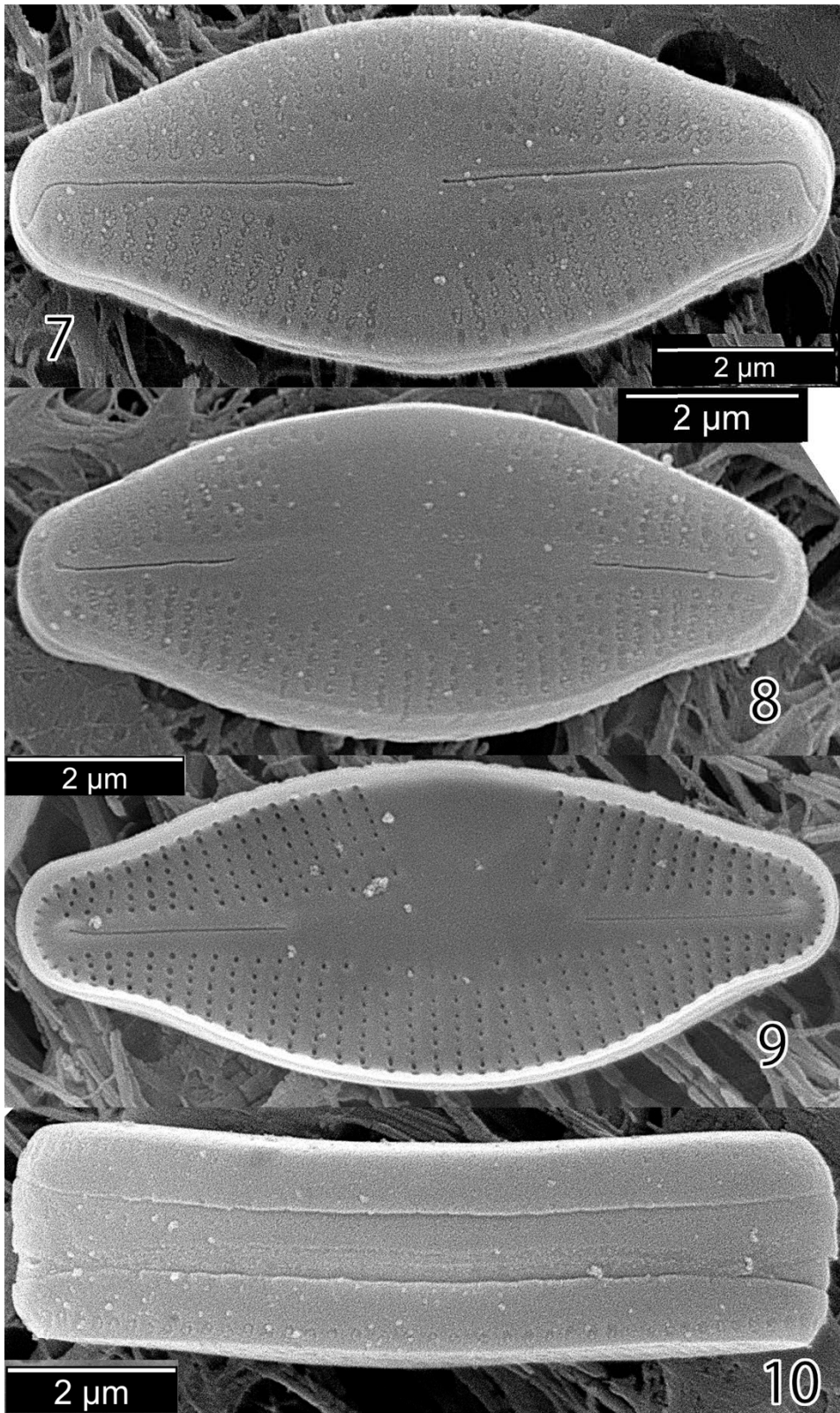
Valves lanceolate. Length 7-10 μ m, breath 3-5. Striae radiate at centre of valve, becoming convergent towards poles, 30-36 in 10 μ m. Since the morphological variation of outline of valves in this strain, is very wide, and striae is very fine and difficult to dissolve, it is difficult to compare with the other described taxa.

One valve with long raphe slits with curved terminal fissure. The other valve with distinctly shorter raphe slits and widely separated central endings.

Though, this strain is similar to *Nupela neglecta* Ponader et al., it is distinguished by density of striae and the form of central area. More examination is essential to understand this strain.



Figs 1-6. *Nupela* sp. (LM).



Figs 7-10. *Nupela* sp. (SEM).