

# Pore distributional patterns of *Loxoconcha ikeyai* (Crustacea: Ostracoda: Loxoconchidae) from the Lower Pleistocene Kakio Formation in Kanagawa Prefecture, central Japan

Hirokazu Ozawa<sup>1</sup>, Tohru Ishii<sup>2</sup> and Yuriko Nakao<sup>3</sup>

<sup>1</sup>Earth Sciences Laboratory, College of Bioresource Sciences, Nihon University, Kameino, Fujisawa, Kanagawa 252–0880, Japan

<sup>2</sup>1409 Yamazaki, Oshima-cho, Fukui, Fukui 918–8018, Japan

<sup>3</sup>Department of Geosystem Sciences, College of Humanities and Sciences, Nihon University, Sakurajosui, Setagaya, Tokyo 156–8550, Japan

**Abstract** The ostracod genus *Loxoconcha* is widely known from modern shallow-marine and brackish water environments and also as fossils in Upper Cenozoic strata. This study examined pore distributional patterns of *Loxoconcha ikeyai* from the Lower Pleistocene Kakio Formation in Kanagawa Prefecture, central Japan, and classified 18 *Loxoconcha* species and one species in the related-genus *Loxocorniculum* in Japan and its adjacent areas. We identified two groups (Group A and B), analyzing the distribution of pores over the entire valve and below the eye tubercle. In the adult stage, the members of Group A have a total of 83–88 pores per valve, with an L-shaped pore pattern below the eye tubercle. Group B has 89–112 pores per valve, and an upside-down L-shaped pore pattern below the eye tubercle. With 83 pores per valve and an L-shaped pore pattern below the eye tubercle in the adult stage, *L. ikeyai* is included in Group A. Biogeographical data and fossil records indicate that *L. ikeyai* and the other species of Group A appeared in the Northwest Pacific around 3 Ma. We presented additional evidence for the successful diversification of the genus *Loxoconcha* in the Northwest Pacific since the Pliocene.

**Key words:** Ostracoda, *Loxoconcha ikeyai*, Pleistocene, pore, Northwest Pacific

## Introduction

The ostracod genus *Loxoconcha* (Podocopida, Loxoconchidae) is widely distributed in shallow-marine and brackish water environments from tropical to subarctic regions (e.g., Athersuch and Horne, 1984; Athersuch *et al.*, 1989; Horne, 2003). *Loxoconcha* is one of the most diverse ostracod genera mainly in shallow-marine areas and is common along the coast of Japan (e.g., Ishizaki, 1968; 1971; Okubo, 1980; Yajima, 1982; Ikeya and Suzuki, 1992; Zhou, 1995; Tanaka and Ikeya, 2002; Ozawa, 2010; Le and Tsukagoshi, 2014). Ishii *et al.* (2005) and Ozawa and Ishii (2008) investigated the pore and phylogeny of the 17 species in this genus and one species in its related-genus *Loxocorniculum* in the same family, primarily from Japan. They examined the

number, distribution, and differentiation of pores on the carapace throughout ontogeny to determine the phylogenetic relationships among *Loxoconcha* and *Loxocorniculum* species.

However, the phylogenetic relationships of several *Loxoconcha* species in Japan and its adjacent areas have not yet been determined by pore analyses. The ostracod fauna from the Pacific coast of Japan has diversified since the Pliocene, including many *Loxoconcha* species (e.g., Ishizaki, 1983; Zhou, 1995; Nakao *et al.*, 2001; Yasuhara and Irizuki, 2001; Iwatani and Irizuki, 2008; Tanaka *et al.*, 2012; Yamaguchi *et al.*, 2012). Therefore, the detailed phylogenetic examination of *Loxoconcha* species in this area is important for elucidating the global evolutionary history of podocopids during the Cenozoic.

This study examined the pore distributional patterns of *Loxoconcha ikeyai* using fossil specimens from the Lower Pleistocene Kakio Formation in Kanagawa Prefecture, central Japan. We used the differentiation of distributional pattern of pores (DDP analysis of Kamiya, 1997) and pore distributional pattern below the eye tubercle analyses (PBE analysis of Ishii *et al.*, 2005) to re-assign the classification of the genera *Loxoconcha* and *Loxocorniculum*. We focused on *L. ikeyai* found primarily in the Pleistocene strata on the Pacific coast of Kanagawa Prefecture in central Japan, and briefly discuss its biogeography and ecology.

### Materials and Methods

Fossil specimens of *Loxoconcha ikeyai* (Fig. 1) were extracted from a siltstone sample RM-016729 taken from an exposure in the Tama Hills (37°35'42"N, 136°30'19"E; leg. the late Y. Kuwano, Japan) of the Lower Pleistocene (ca. 1.5–1.4 Ma; Takano, 1994; Suzuki and Murata, 2011) Kakio Formation of the Kazusa Group in Kawasaki City, Kanagawa Prefecture, central Japan (Figs. 2 and 3). This locality is the same as Loc. "Yamaguchi" (Otuka, 1932) in the bed of a small river in Yamaguchi, Asao-ku, Kawasaki City, Kanagawa Prefecture, central Japan. This sample was collected by Dr. Y. Kuwano in the 1940s. This outcrop is no longer visible on the

river bed because of residential development in the last half century. This sample is deposited in the sample collections of the National Museum of Nature and Science, Tsukuba, Japan, and is identified by numbers with the prefix RM (i.e., raw material collection for microfossil analysis).

We examined the number, morphology, and distributional pattern of pores (Fig. 4) as well as the carapace ornamentation morphology of the adult and A-1 juvenile stages of *L. ikeyai* using a scanning electron microscope (SEM), JEOL-JSM-5310 at the National Museum of Nature and Science, Tsukuba, Japan. Ostracods grow by molting (ecdysis) like other crustaceans such as shrimps, and podocopid ostracods usually undergo eight molt (instar) stages between egg and adult (e.g., Athersuch *et al.*, 1989). The juvenile stage just prior to the adult stage is called 'A-1' (Fig. 5C caption, and Fig. 6), because herein 'A' refers to the last adult stage (i.e., the first sexually mature stage; e.g., Athersuch *et al.*, 1989).

### Outline of the pore analyses

Ostracod pores on the carapace are a type of sensory receptor, and based on histological studies of living species (e.g., Okada, 1981, 1982) the pore distributional pattern on the carapace surface indicates the distributional pattern of the nerve cells below the carapace. Beginning at the embryo stage in arthropods, the relationship

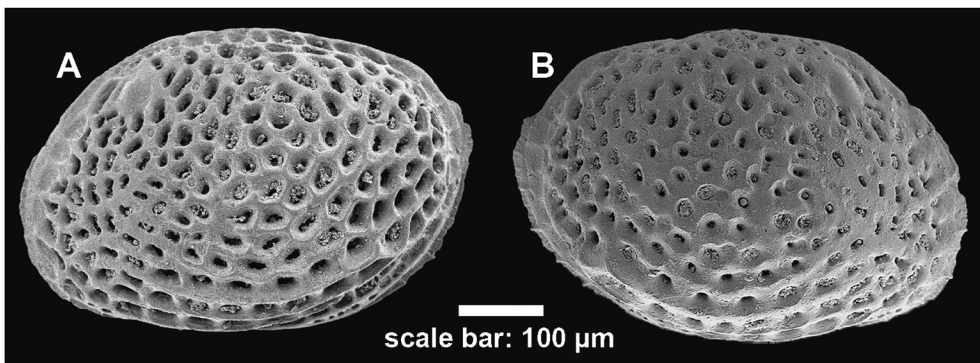


Fig. 1. SEM images of *Loxoconcha ikeyai*. **A**, female right valve, external lateral view. **B**, female left valve, external lateral view. These specimens were obtained from the sample RM-016729 of the Lower Pleistocene Kakio Formation in Kanagawa Prefecture, central Japan (Fig. 2).

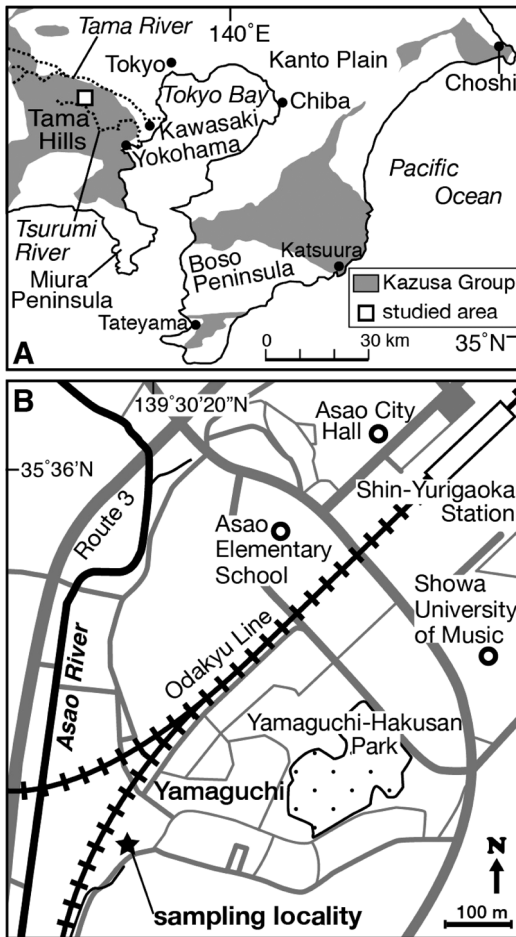


Fig. 2. **A**, The map showing the studied area and distribution of the Kazusa Group in central Japan, modified from Mitsunashi *et al.* (1979). **B**, The map showing the sampling locality (no. RM-016729) for *Loxoconcha ikeyai* of Kanagawa Prefecture, central Japan.

between the distribution of both the sensory receptors and the *Distal-less* homeobox gene (Mittmann and Scholtz, 2001) suggests that the distributional pattern of ostracod pores is conservatively controlled by genes (Tsukagoshi, 2007).

Tsukagoshi (1990) first proposed the reconstruction of ostracod phylogeny using the interspecific differentiation of pore pattern distribution for species in the podocopid genus *Cythere*. He demonstrated ontogenetic differences in the pore distributional pattern among 14 species, obtaining greater differences in later molting stages (the A-2

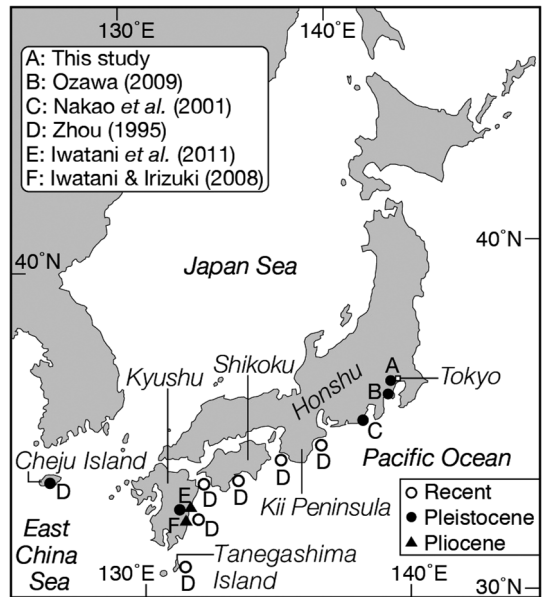


Fig. 3. The map showing localities of *Loxoconcha ikeyai*.

and A-1 juveniles and the adult). He concluded that the interspecific differentiation in the pore distributional patterns during ontogeny reflected the phylogeny of this genus. He estimated the phylogenetic relationship among these species based on the molting stage, first differentiating the pore distributional patterns in the A-2 juvenile to adult stages from those of other species.

Tsukagoshi (2001) pointed out that the pore-analysis based on phylogeny of Tsukagoshi (1990) was supported by a molecular phylogenetic analysis for approximately 600 base pairs of the mitochondrial gene cytochrome oxidase I. The results demonstrated that interspecific similarities or differences in the pore distributional patterns can be used to examine the phylogenetic relationships among ostracod species (e.g., Tsukagoshi, 2001). Tsukagoshi's (1990) research on *Cythere* was followed by several studies of the phylogenetic relationships of species within other ostracod genera (e.g., Irizuki, 1993; Kamiya, 1997; Ishii *et al.*, 2005; Smith and Kamiya, 2005; Sato and Kamiya, 2007). Kamiya (1997) named the phylogenetic reconstruction method proposed by Tsukagoshi (1990) the "dif-

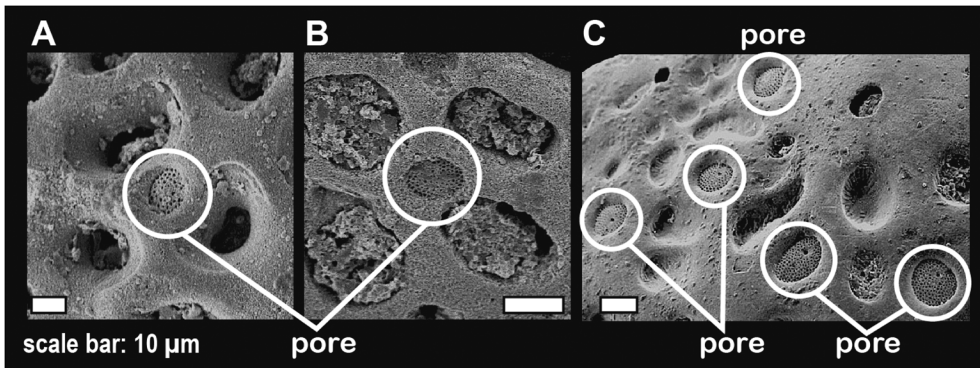


Fig. 4. Close-up view of SEM images of pores of two *Loxoconcha* species. **A**, **B**, normal pores in central area (**A**) and mid-dorsal marginal area (**B**) on left valve of *Loxoconcha ikeyai*, obtained from the sample RM-016729 of the Lower Pleistocene Kakio Formation in Kanagawa Prefecture, central Japan. **C**, normal pores in antero-dorsal area around eye tubercle on left valve of *Loxoconcha kamiyai* from the Lower Pleistocene Omma Formation in Toyama Prefecture, central Japan (MPC-03676 in the National Science Museum, Tsukuba, Japan), modified from Ozawa and Ishii (2008).

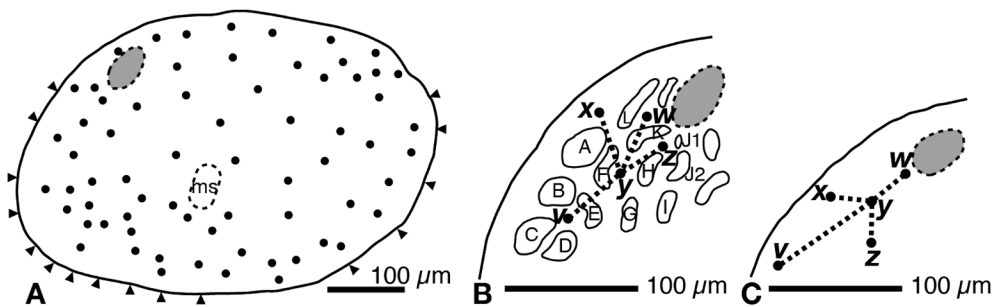


Fig. 5. **A**, Distributional pattern of pores in adult left valve of *Loxoconcha ikeyai*. **B**, **C**, distributional patterns of pores in left valve below the eye tubercle (PBE) at the adult (**B**) and A-1 juvenile (**C**) stages. The codes for pores (*v*–*z*) and for reticulations (*A*–*L*) were designated by Ishii *et al.* (2005) in the PBE analysis. A black circle and triangle indicate a normal pore and a marginal pore, respectively. A shaded oval represents the eye tubercle. A dotted area oval labelled ‘ms’ represents the muscle scar area.

ferentiation of distributional pattern of pores analysis” (DDP analysis).

Furthermore, Ishii *et al.* (2005) and Ozawa and Ishii (2008) divided the 17 species in the genus *Loxoconcha* and one species in the related-genus *Loxocorniculum* in the same family into Groups A and B, based on analysis of the pore distributional pattern below the eye tubercle in later molting stages (A-3 juvenile to adult). Ishii *et al.* (2005) first proposed the PBE analysis for *Loxoconcha* species, and concluded that this division (i.e., Groups A and B) reflected phylogenetically related groups. Using only the PBE of

the adult stage (i.e., the pattern of common pores named *v*, *w*, *x*, *y*, and *z* in and around the common pattern of polygonal reticulations named *A* to *J* in this genus), we can immediately determine if a species belongs to Group A or B. At the adult stage, Group A species (a total of 83–88 pores on a valve; 13 species) have an “L-shaped” PBE pattern, and Group B species (89–112 pores on a valve; 5 species) have an “upside-down L-shaped” PBE pattern.

Previously these two pore-based methods (the DDP and PBE analyses) were used for phylogenetic assessments of *Loxoconcha* species. Pores

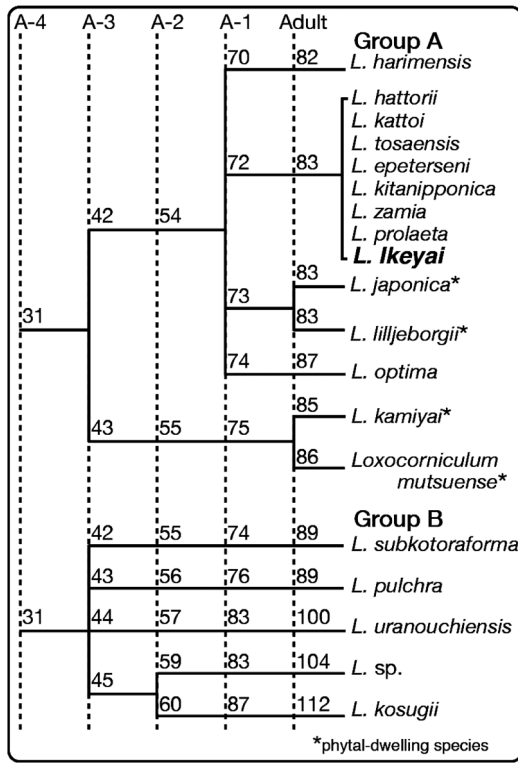


Fig. 6. Results of the DDP analysis for 19 *Loxoconcha* species in Japan and its adjacent areas including *Loxoconcha ikeyai*, modified from Ozawa (2013). Numbers indicate total numbers of pores for each lineage and instar stage. Species without \* are bottom dwellers. The trees drawn by hand.

are relatively well-preserved on the carapaces of not only living ostracods but also of modern dead or fossil ostracods without soft parts (e.g., appendages and copulatory organs), enzymes and nucleic acids. However, future determination of phylogenetic relationships would ideally be obtained by analyses of both carapace pore distribution and DNA sequence (e.g., Kamiya, 1997; Tsukagoshi, 2007). Detailed principles, procedures, strengths, and problems with determining phylogeny based on ostracod pore distributions are outlined in the following studies: Tsukagoshi (1988, 1989, 1990, 1996, 2001, 2007), Kamiya and Hazel (1989), Irizuki (1993), Ikeya and Yamaguchi (1993), Kamiya (1997), Ishii *et al.* (2005), Smith and Kamiya (2005), Tsurumi and

Kamiya (2007), and Le and Tsukagoshi (2014).

## Results

We examined the pore distributional patterns on the valves of *Loxoconcha ikeyai* (Fig. 5). The DDP analysis showed that this species has a total of 83 pores (normal and marginal pores) per valve in the adult stage (Fig. 5A). Marginal pores (5  $\mu\text{m}$  in diameter) are situated on the marginal infold. Normal pores are larger (with sieve plates 10–20  $\mu\text{m}$  in diameter) than marginal pores, and are found on all parts of the carapace except the marginal area. The PBE analysis for the adult and A-1 juvenile stages of *L. ikeyai* revealed the “L-shaped” pore pattern noted by Ishii *et al.* (2005) (pores *v–z* in Fig. 5B). This differed from the “upside down L-shaped” pattern also noted in their study. The PBE analysis for the A-1 juvenile stage revealed an “upside down L-shaped” pattern (*v–z* in Fig. 5C), which differs from another “L-shaped” pattern in their study. Based on the results of the PBE analysis by Ishii *et al.* (2005) and Ozawa and Ishii (2008), the 17 *Loxoconcha* species and one *Loxocorniculum* species were divided into two groups, A and B. Based on the PBE result and the total number of pores on the adult, *L. ikeyai* belongs to Group A, which includes seven species with 83 pores (Fig. 6).

Within Group A, *L. japonica* and *L. lilljeborgii* have the same total number of pores in the adult stage as *L. ikeyai* (Fig. 6), but the three species differ in pore distribution; *L. ikeyai* has two missing pores and two additional pores as compared to *L. japonica* (Fig. 7A) and *L. lilljeborgii* (Fig. 7B), respectively. A difference of a single pore in the total number of pores in the adult stage between *L. ikeyai* and *L. harimensis* was observed, with two missing pores in the dorsal and posterior areas and three additional pores in the posterior area of *L. ikeyai* (Fig. 7C).

## Discussion

Based on the results of the DDP and PBE analyses for the adult phase, *L. ikeyai* is included in

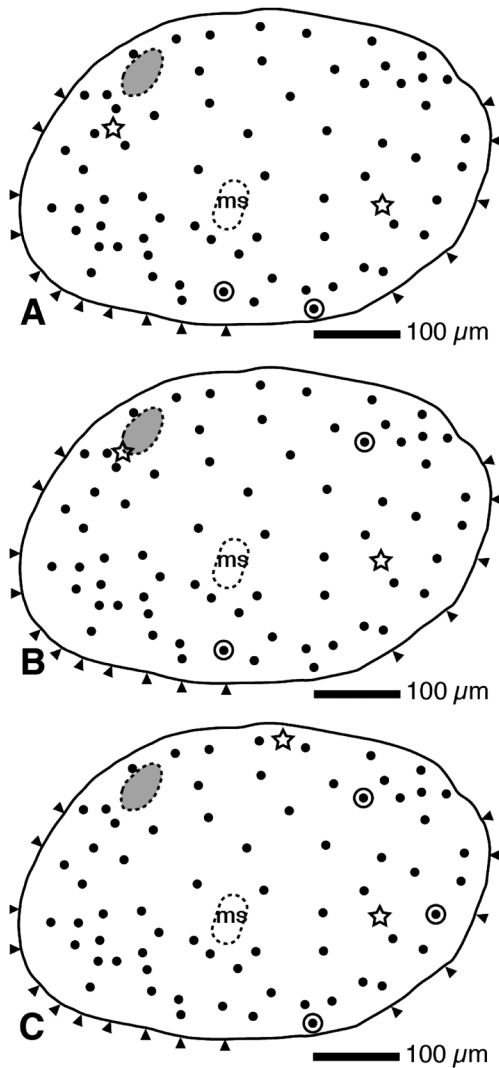


Fig. 7. Distributional pattern of pores in adult left valve of *Loxoconcha japonica* (A), *Loxoconcha lilijeborgii* (B), and *Loxoconcha harimensis* (C). Data sourced from Ishii *et al.* (2005). A black dot indicates a common pore for *L. ikeyai* and the three species. A white star and double circle represent a missing pore in *L. ikeyai* and a characteristic pore for the species, respectively. Abbreviations are the same as those of Fig. 5.

one subgroup of Group A (*Loxoconcha hattorii*, *L. kattoi*, *L. tosaensis*, *L. epeterseni*, *L. kitaniponica*, *L. zamia* and *L. prolaeta*; Fig. 6). These eight species have the same total number of normal and radial pores in the adult and A-1 juvenile stages (83 and 72 pores, respectively; Fig. 6) and

the same distributional pattern. The similarity of the surface ornamentation of *L. ikeyai* and the other seven species in the group supports this assessment. These eight species in this subgroup show (1) the existence of concentric rows of clear reticulations parallel to the anterior, ventral, and posterior marginal areas, (2) relatively distinct eye tubercles, and (3) a slightly swollen ala in the postero-ventral area.

Our compiled data indicate *L. ikeyai* appeared on the Pacific coast of southwestern Japan in the Late Pliocene (ca. 2.7Ma; age data from Iwatani *et al.*, 2011; Fig. 3). Today this species is mainly distributed in upper shelf areas in the Pacific off southwestern Japan (Zhou, 1995, unpublished data). Ishii *et al.* (2005) showed that the present diversification of Japanese *Loxoconcha* depended on the success of Group A. Most species in Group A appeared around Japan during or following the Late Pliocene, and diversified within a relatively short geological period. They developed various modes of life, with particular adaptations to phytal (seagrasses and marine algae) habitats. Among the species shown in Fig. 6, *L. japonica* and two other species in Group A are phytal dwellers (e.g., Ozawa and Ishii, 2008). The successful diversification of Group A was related to the prevalence of marine flowering plants, e.g., *Zostera*, during the Late Cenozoic (Ishii *et al.*, 2005). The remainder of the taxa in both groups are bottom dwellers, including *L. ikeyai* (Ishii *et al.*, 2005). The seagrass beds must have provided new and stable habitats not only for phytal-dwelling but also for bottom-dwelling species (Kamiya, 1988; Ishii *et al.*, 2005).

In contrast, Group B contains several species that have lived in the area around Japan since the early Miocene (Irizuki *et al.*, 2004; Ishii *et al.*, 2005). The main habitats of these species are currently brackish-water areas, where the number of ostracod species is more limited than in marine environments because of unstable and variable conditions such as salinity (e.g., Ikeya and Shiozaki, 1993; Ikeya *et al.*, 1995; Nakao and Tsukagoshi, 2002, 2008; Irizuki *et al.*, 2008). Group B is not as diverse as Group A despite its long his-

tory, which may be attributable to habitat conditions (Ishii *et al.*, 2005). Our examination of the pore distributional patterns on *L. ikeyai* provided additional evidence for the successful diversification of the genus *Loxoconcha* in the Northwest Pacific since the Pliocene.

Based on the carapace shape and water-depth of the habitat, *Loxoconcha ikeyai* is considered to be a bottom-dwelling species. According to Kamiya (1988), who identified morphological difference between bottom-dwelling and phytal-dwelling taxa, the bottom-dwelling ostracods have carapaces with the rectangle lateral view and the triangle posterior view, while the phytal-dwelling taxa possess carapaces with the circle lateral view and the rugby-ball shaped posterior view. The triangle posterior view of *L. ikeyai* indicates that the species is a bottom-dwelling species. Our inference is supported by the water depth where *L. ikeyai* is found. This species was reported mainly from seafloor sediments at or deeper than ca. 100m water depth deeper than the photic zone (Zhou, 1995, unpublished data). On the seafloors deeper than the photic zone, marine algae and plants, and phytal-dwelling ostracods would be difficult to live.

### Taxonomic Note

Family Loxoconchidae Sars, 1926

Genus *Loxoconcha* Sars, 1926

*Loxoconcha ikeyai* Zhou, 1995

(Figs. 1A, B, 4A, B)

*Loxoconcha ikeyai*: Zhou, 1995, pl. 5, figs. 14-a, b, 15; Nakao *et al.*, 2001, p. 141, fig. 11-3; Iwatani and Irizuki, 2008, p. 68, fig. 6-18; Ozawa, 2009, p. 234, table 1; Iwatani *et al.*, 2011, p. 280, fig. 5-3.

**Occurrence:** Fossil, Pliocene and Pleistocene, Japan; Upper Pliocene Takanabe Formation (Iwatani and Irizuki, 2008; Iwatani *et al.*, 2011) of Northwest Pacific coast; Lower Pleistocene Takanabe Formation (Iwatani *et al.*, 2011), Ukari and Hijikata Formations (Nakao *et al.*, 2001), Kakio Formation of Northwest Pacific coast (this study; sample no. RM-016729), Lower Pleistocene stratum on the Cheju Island of East China

Sea (Zhou, 1995), Middle Pleistocene Naganuma Formation of Northwest Pacific coast (Ozawa, 2009). Recent, off southwestern Japan; Northwest Pacific east of Tanegashima Island off Kyushu from surface sediment obtained at 254m water depth, Hyuga-nada region southeast of Kyushu from surface sediment obtained at 36–140m depths, Bungo-suido region east of Kyushu from surface sediment obtained at 102–189m depths, in Tosa Bay south of Shikoku from surface sediment obtained at 106–162m depths, southwest of Kii Peninsula (Tanabe City) of Honshu from surface sediment obtained at 102–309m depths, and Kumano-nada region southeast of Kii Peninsula of Honshu from surface sediment obtained at 100m depth (Zhou, 1995). For detailed data of Recent sample localities, see Zhou (1995).

### Acknowledgments

We wish to thank Y. Tanimura and M. Saito (the National Museum of Nature and Science, Japan) for kind assistance in various aspects of preparing the manuscript and of the registration of materials examined herein. Thanks are also due to the late Y. Kuwano for supplying sediment samples for ostracod remains, and B.-C. Zhou (China) for presenting the unpublished data of the modern ostracod occurrences from the Pacific coast of southwestern Japan. We also would like to thank T. Irizuki (Shimane University, Japan), M. Yasuhara (Hong Kong Univeristy, China) and one anonymous reviewer for constructive comments and valuable advices with Textcheck Pvt. Ltd. for correcting the English.

### References

- Athersuch, J. and Horne, D. J. (1984) A review of some European genera of the Family Loxoconchidae (Crustacea; Ostracoda). *Zoological Journal of the Linnean Society*, **81**: 1–22.
- Athersuch, J., Horne, D. J. and Whittaker, J. E. (1989) Marine and Brackish Water ostracods. In: Kermack, D. M. and Barnes, R. S. K. (Ed.), *Synopses of the British Fauna (New Series) No. 43*. The Linnean Society of

- London and the Estuarine and Brackish-Water Sciences Association, 343 pp. E. J. Brill, Leiden.
- Horne, D. J. (2003) Key events in the ecological radiation of the Ostracoda. In: Park, L. E. and Smith, A. J. (Ed.) *Bridging the Gap: Trends in the Ostracode Biological and Geological Sciences*. The Paleontological Society Papers 9, Yale University, New Haven, pp. 153–179.
- Ikeya, N. and Shiozaki, M. (1993) Characteristic of the inner-bay ostracodes around the Japanese Islands—the use of ostracodes to reconstruct paleoenvironments. *Memoirs of the Geological Society of Japan*, **39**: 15–32. (In Japanese with English abstract.)
- Ikeya, N. and Suzuki, C. (1992) Distributional patterns of modern ostracodes off Shimane, southwestern Japan Sea. *Reports of the Faculty of Science, Shizuoka University*, **26**: 91–137.
- Ikeya, N. and Yamaguchi, T. (1993) *An Introduction to Crustacean Paleobiology* (UP Biology Series 93), 148 pp. University of Tokyo Press, Tokyo. (In Japanese)
- Ikeya, N., Shimura, K. and Iwasaki, Y. (1995) Ecology and adaptation of the genus *Spinileberis* in the North Pacific. In: Riha, J. (Ed.), *Ostracoda and Biostratigraphy*. Balkema, Rotterdam, pp. 389–397.
- Irizuki, T. (1993) Morphology and taxonomy of some Japanese hemicytherin Ostracoda—with particular reference to ontogenetic changes of marginal pores. *Transactions and Proceedings of the Palaeontological Society of Japan, New Series*, **170**: 186–211.
- Irizuki, T., Seto, K. and Nomura, R. (2008) The impact of fish farming and bank construction on Ostracoda in Uranouchi Bay on the Pacific coast of southwest Japan—Faunal changes between 1954 and 2002/2005. *Paleontological Research*, **12**: 283–302.
- Irizuki, T., Yamada, K., Maruyama, T. and Ito, H. (2004) Paleocology and taxonomy of Early Miocene Ostracoda and paleoenvironments of the eastern Setouchi Province, central Japan. *Micropaleontology*, **54**: 105–147.
- Ishii, T., Kamiya, T. and Tsukagoshi, A. (2005) Phylogeny and evolution of *Loxococoncha* (Ostracoda, Crustacea) species around Japan. *Hydrobiologia*, **538**: 81–94.
- Ishizaki, K. (1968) Ostracodes from Uranouchi Bay, Kochi Prefecture, Western Honshu, Japan. *Science Reports of the Tohoku University, Second Series (Geology)*, **37**: 1–45.
- Ishizaki, K. (1971) Ostracodes from Aomori Bay, Aomori Prefecture, Northeast Honshu, Japan. *Science Reports of the Tohoku University, Second Series (Geology)*, **43**: 59–97.
- Ishizaki, K. (1983) Ostracoda from the Pliocene Ananai Formation, Shikoku, Japan—Description. *Transactions and Proceedings of the Palaeontological Society of Japan, New Series*, **131**: 135–158.
- Iwatani, H. and Irizuki, T. (2008) Geology and fossil ostracode assemblages from the Pliocene Miyazaki Group in the northern part of Miyazaki Plain, Southwest Japan. *Fossils (The Palaeontological Society of Japan)*, **82**: 61–73. (In Japanese with English abstract.)
- Iwatani, H., Irizuki, T. and Goto, T. (2011) Temporal changes of Plio-Pleistocene Ostracoda from the Takanahe Formation, Miyazaki Group, Southwest Japan. *Paleontological Research*, **15**: 269–289.
- Kamiya, T. (1988) Morphological and ethological adaptations of Ostracoda to microhabitats in *Zostera* beds. In: Hanai, T., Ikeya, N. and Ishizaki, K. (Ed.), *Evolutionary Biology of Ostracoda—Its fundamentals and applications*. Kodansha, Tokyo and Elsevier, Amsterdam, pp. 303–318.
- Kamiya, T. (1997) Phylogenetics estimated from fossil information—the pore systems of Ostracoda. *Seibutsuno-kagaku Iden*, **51**: 28–34. (In Japanese.)
- Kamiya, T. and Hazel, J. E. (1989) Shared versus derived characters in the pore-system of *Loxococoncha* (Ostracoda, Crustacea). *Journal of Micropaleontology*, **11**: 159–166.
- Le, D. D. and Tsukagoshi, A. (2014) Three new species of the genus *Loxococoncha* (Crustacea, Ostracoda, Podo-copida) from the Okinawa Islands, southern Japan. *Zootaxa*, **3796**: 147–165.
- Mitsunashi, T., Kikuchi, T., Suzuki, Y., Hirayama, J., Nakajima, T., Oka, S., Kodama, K., Moriguchi, M., Katsurajima, S., Miyashita, M., Yazaki, K. and Kageyama, K. (1979) Chapter 1: Surface geology. Explanatory text of the geological map of Tokyo Bay and adjacent areas. Miscellaneous map series, scale 1 : 100,000, no. 20, The Geological Survey of Japan, Kawasaki, pp. 1–72. (In Japanese with English abstract.)
- Mittmann, B. and Scholtz, G. (2001) *Distal-less* expression in embryos of *Limulus polyphemus* (Chelicerata, Xiphosura) and *Lepisma saccharina* (Insecta, Zygentoma) suggests a role in the development of mechanoreceptors, chemoreceptors, and the CNS. *Development Genes and Evolution*, **211**: 232–243.
- Nakao, Y. and Tsukagoshi, A. (2002) Brackish-water Ostracoda (Crustacea) from the Obitsu River estuary, central Japan. *Species Diversity*, **7**: 67–115.
- Nakao, Y. and Tsukagoshi, A. (2008) Seasonal and decadal changes in distribution and abundance of Ostracoda (Crustacea) in the brackish-water environments. *Proceedings of the Institute of Natural Sciences, Nihon University*, **43**: 249–275. (In Japanese with English abstract.)
- Nakao, Y., Tanaka, G. and Yamada, S. (2001) Pleistocene and Living marine Ostracoda in Shizuoka district, Japan. In: Ikeya, N. (Ed.), *Field Excursion Guidebook of the 14th International Symposium of Ostracoda, Shizuoka*. Organising Committee of 14th ISO, Shizuoka, pp. 127–147.
- Okada, Y. (1981) Development of cell arrangement in ostracod carapaces. *Paleobiology*, **7**: 276–280.



- Okada, Y. (1982) Ultrastructure and pattern of the carapace of *Bicornucythere bisanensis* (Ostracoda, Crustacea). *Bulletin, the University Museum, University of Tokyo*, **20**: 229–267.
- Okubo, I. (1980) Taxonomic studies on Recent marine podocopid Ostracoda from the Inland Sea of Seto. *Publications of the Seto Marine Biological Laboratory*, **25**: 389–443.
- Otuka, Y. (1932) Geology of the Tama Hills (Part 1). *The Journal of the Geological Society of Japan*, **39**: 641–655. (In Japanese.)
- Ozawa, H. (2009) Middle Pleistocene ostracods from the Naganuma Formation in the Sagami Group, Kanagawa Prefecture, central Japan: palaeo-biogeographical significance of the bay fauna in Northwest Pacific margin. *Paleontological Research*, **13**: 231–244.
- Ozawa, H. (2010) Extinction of cytheroidean ostracodes (Crustacea) in shallow-water around Japan in relation to environmental fluctuations since the early Pleistocene. In: Tepper, G. H. (Ed.), *Species Diversity and Extinction*. Nova Science Publishers, Incorporated, New York, pp. 61–109.
- Ozawa, H. (2013) Chapter 4: The History of Sexual Dimorphism in Ostracoda (Arthropoda, Crustacea) since the Palaeozoic. In: Moriyama, H. (Ed.) *Sexual Dimorphism*. InTech Open Access Company, Rijeka, pp. 51–80.
- Ozawa, H. and Ishii, T. (2008) Taxonomy and sexual dimorphism of a new species of *Loxoconcha* (Podocopida: Ostracoda) from the Pleistocene of the Japan Sea. *Zoological Journal of the Linnean Society*, **153**: 239–251.
- Sars, G. O. (1926) Ostracoda, Parts 13, 14. Cytheridae (continued). In: *An Account of the Crustacea of Norway with Short Descriptions and Figures of All the Species*, Volume 9, Bergen Museum, Bergen, pp. 209–240.
- Sato, T. and Kamiya, T. (2007) Taxonomy and geographical distribution of recent *Xestoleberis* species (Cytheroidea, Ostracoda, Crustacea) from Japan. *Paleontological Research*, **11**: 183–227.
- Smith, R. J. and Kamiya, T. (2005) The ontogeny of the entocytherid ostracod *Uncinocythere occidentalis* (Kozloff & Whitman, 1954) Hart, 1962 (Crustacea). *Hydrobiologia*, **538**: 217–229.
- Suzuki, T. and Murata, M. (2011) Stratigraphy and correlation of tephra in the Lower Pleistocene Kiwada Formation and its correlative beds, Kanto, Central Japan. *The Journal of the Geological Society of Japan*, **117**: 379–397. (In Japanese with English abstract.)
- Takano, S. (1994) Stratigraphy of the lower Pleistocene Kazusa Group in the Tama Hill, central Japan. *The Journal of the Geological Society of Japan*, **100**: 675–691. (In Japanese with English abstract.)
- Tanaka, G. and Ikeya, N. (2002) Migration and speciation of the *Loxoconcha japonica* species group (Ostracoda) in East Asia. *Paleontological Research*, **6**: 265–284.
- Tanaka, G., Zhou, B. C., Ikeya, N. and Hasegawa, Y. (2012) Recent ostracod assemblages from Suruga Bay, Central Japan. *Bulletin of Gunma Museum of Natural History*, **16**: 1–30.
- Tsakagoshi, A. (1988) Reproductive character displacement in the ostracod genus *Cythere*. *Journal of Crustacean Biology*, **8**: 563–575.
- Tsakagoshi, A. (1989) The character of male copulatory organ and the distribution pattern of normal pore canals in the ostracode genus *Cythere*—consideration of their usefulness for the phylogenetic reconstruction. *Benthos Research (Bulletin of Japanese Association of Benthology)*, **35/36**: 89–96. (In Japanese.)
- Tsakagoshi, A. (1990) Ontogenetic change of distributional patterns of pore systems in *Cythere* species and its phylogenetic significance. *Lethaia*, **23**: 225–241.
- Tsakagoshi, A. (1996) Recommendations from paleontology: fossils that demonstrate organismal phylogeny. In: Iwatsuki, K. and Mawatari, S. (Ed.), *Species Diversity, Biodiversity Series 1*. Shokabo, Tokyo, pp. 173–187. (In Japanese.)
- Tsakagoshi, A. (2001) Chapter 3-C: Evolutionary palaeontological data obtained from ontogenetic characters – Case studies for Ostracoda. In: Ikeya, N. and Tanabe, K. (Ed.), *Life-History of Paleontology, Paleontological Science Series 3*. Asakura Publishing, Tokyo, pp. 78–86. (In Japanese.)
- Tsakagoshi, A. (2007) Chapter 2: Geobiological history perused by researches for Ostracoda. In: Katakura, H. and Mawatari, S. (Ed.) *Diversity of Organisms, Organism Science in the 21st Century Series 2*. Baifukan, Tokyo, pp. 37–70. (In Japanese.)
- Tsurumi, A. and Kamiya, T. (2007) Phylogenetic relationships and biogeography of eight species of *Neonesidea* (Crustacea, Ostracoda, Podocopida) from Japan and Southeastern Asia. *Taxa (Proceedings of the Japanese Society of Systematic Zoology)*, **23**: 19–31. (In Japanese with English abstract.)
- Yajima, M. (1982) Late Pleistocene Ostracoda from the Boso Peninsula, Central Japan. *Bulletin, the University Museum, the University of Tokyo*, **20**: 141–227.
- Yamaguchi, T., Mashiba, H. and Kamiya, T. (2012) Miocene Ostracodes from the Osaki Formation, Kukinaga Group, Tanegashima, Southwest Japan, and their Significance for the Biogeography of the Indo-West Pacific. *Paleontological Research*, **16**: 107–123.
- Yasuhara, M. and Irizuki, T. (2001) Recent Ostracoda from the northeastern part of Osaka Bay, southwestern Japan. *Journal of Geosciences, Osaka City University*, **44**: 57–95.
- Zhou, B. C. (1995) Recent ostracode fauna in the Pacific off Southwest Japan. *Memoirs of the Faculty of Science, Kyoto University, Series of Geology and Mineralogy*, **57**: 21–98.