

Two New Species of *Earina*, Orchidaceae from Vanuatu

by

Tamotsu HASHIMOTO*

橋本 保*: バヌアツ産 *Earina* 属 (ラン科) の 2 新種

The genus *Earina* Lindl. consists of less than 10 species, in New Caledonia to Tahiti and to New Zealand. The single species reported from Vanuatu (Lewis and Cribb 1989) is *E. valida* Reichb. f. The present new species are collected in western slope of Mt. Tabwemasana, Espiritu Santo.

Earina sigmoidea T. Hashimoto, sp. nov. (Figs. 1~2).

Difert a *E. valida* pseudobulbi non evoluti; labello integro et sigmoideol; ovario profunde sulcato.

Plant epiphytic, to ca. 60 cm high. Rhizome much abbreviated. Pseudobulb obscure or not developed. Leaves distichous, subcoriaceous, articulate; leaf-base equitant, persistent, 6~8 cm long; blade lanceolate-linear, unequally and obtusely bilobed at the apex, to 60 cm long, 0.7~2 cm broad. Inflorescence terminal, erect, 40~60 cm high; raceme congested or somewhat congested, 6~11 cm long, forming oblong to narrowly plane, with distichous short branches; each branch 2~5 mm long, bearing a bract, 4 (~5) flowered; bract narrowly triangular, becomes bristles in flowering after the mesophyll crumbling, ca. 7 mm long. Bracteoles imbricate, transversely ovate-conduplicate, ca. 2 mm long. Flowers white, resupinate, 4~5 mm across in natural position; dorsal sepal oblong, obtusely and minutely acute at the apex, 5-nerved, ca. 4.5 mm long, ca. 2 mm broad; lateral sepals obliquely ovate-oblong, slightly larger and broader than the dorsal sepal, subacute with an acumen at the apex, 5-nerved; petals obliquely elliptic, obtuse, slightly narrower than the dorsal sepal, 3-nerved; lip oblong when spread out, entire, obtuse, sigmoid from side, somewhat constricted medially, canaliculate at the posterior half, saccate at the base, 7-nerved, 5.3 mm long, 2.5 mm broad when spread out; column semi-terete with an apical pair of obtusely triangular wings, ca. 5 mm long; ovary cylindrical with prominent 6-grooves, 6~7 mm long.

ESPIRITU SANTO. Palitaliefu near Nokovula, ca. 1200 m alt., Nov. 6, 1996, coll. by T. Hashimoto (No. 111) - holotype in TNS.

This new species is related to *E. valida* Reichb. f., originally described from New Caledonia, but differs from it by its undeveloped pseudobulb, entire lip and deeply grooved ovary. The description of the Fijian *E. valida* (Kores 1991) is suspicious that including this new species by its entire lip. Although *E. valida* from Vanuatu was described as "lip trilobed" (Lewis and Cribb 1989), there to be needed to reappraise, because the specific characters are usually difficult to examine on dried specimens.

*Tsukuba Botanical Garden, National Science Museum, Tsukuba, 305. 国立科学博物館 筑波研究資料センター 筑波実験植物園.

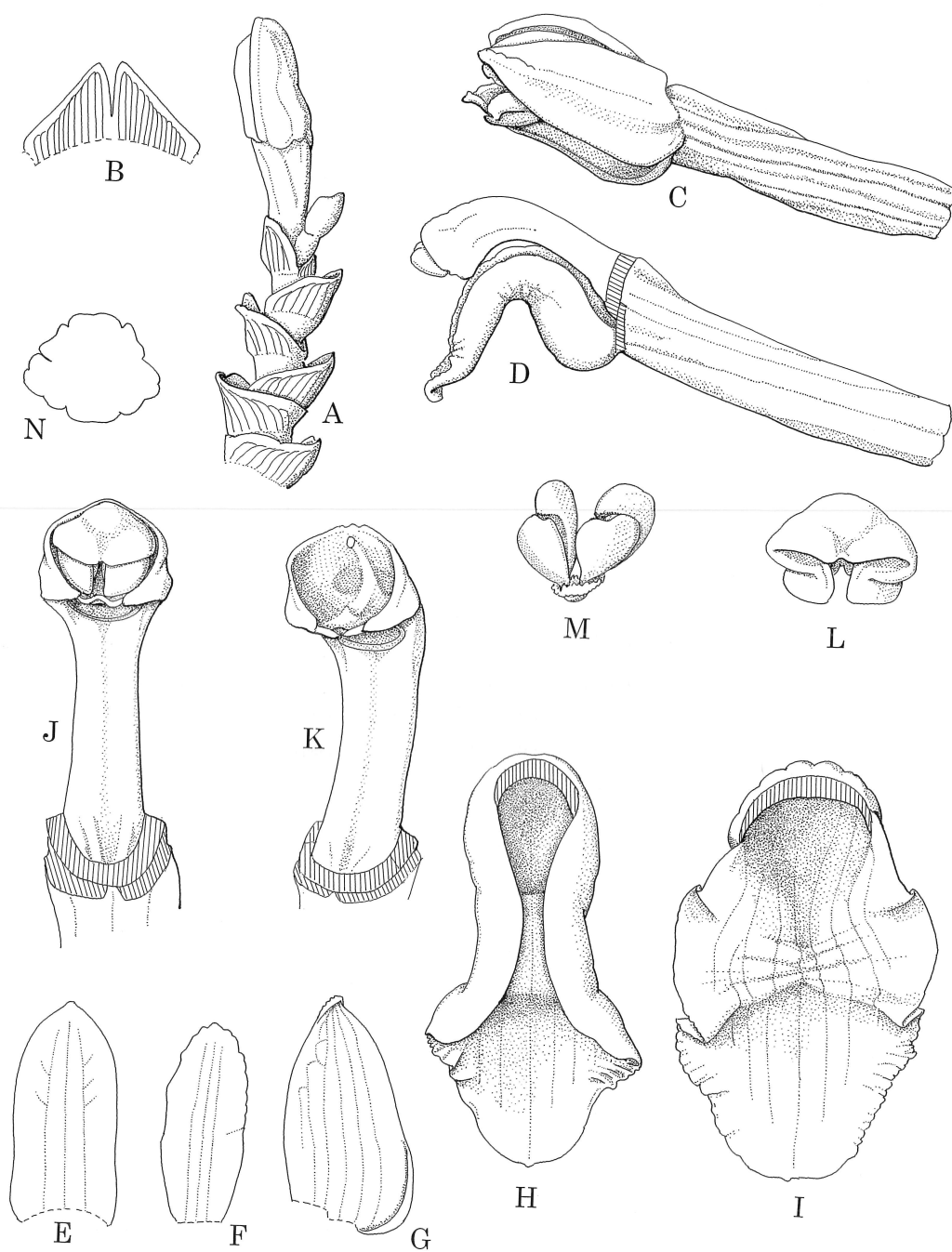


Fig. 1. *Earina sigmoidea*.

A, flower from below, $\times 6$. B, flower from side, $\times 7$. C, flower from side, sepals and petals removed, $\times 6$. D, dorsal sepal, spread out, $\times 7$. E, petal, spread out, $\times 7$. F, lateral sepal, spread out, $\times 7$. G, lip from above, epichile spread out, $\times 12$. H, lip, spread out, $\times 12$. I, column, ventral view, $\times 9$. J, column from side, $\times 9$. K, cross section of ovary, \times ca. 10.



Fig. 2. *Earina sigmoidea* in habitat.



Fig. 3. *Earina santoensis*, plant on the tree in habitat.

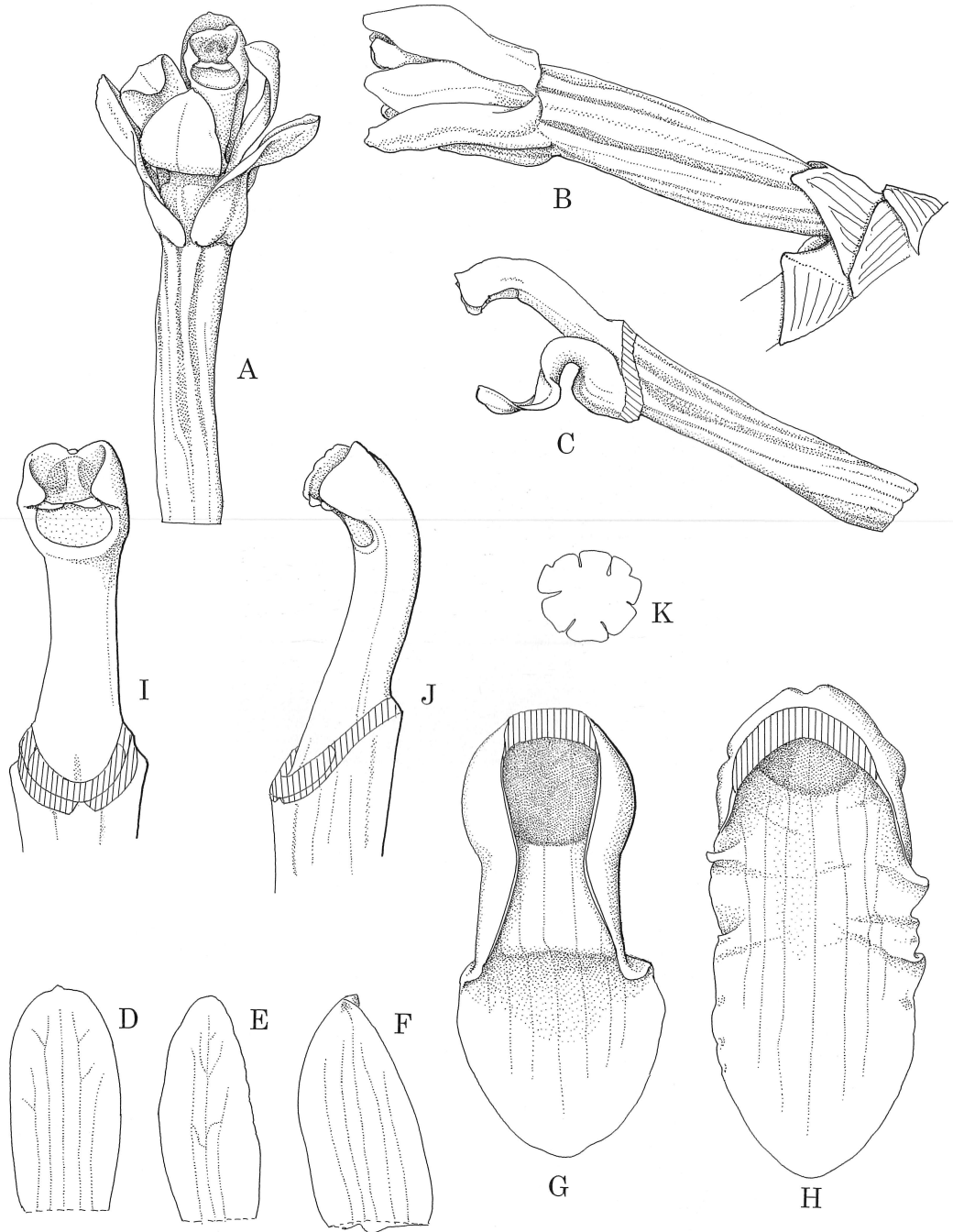


Fig. 4. *Earina santoensis*.

A, branch of inflorescence, $\times 5$. **B**, brateole, expanded, tip cracked, $\times 5$. **C**, flower from side, $\times 7$. **D**, flower from side, sepals and petals removed, $\times 7$. **E**, dorsal sepal, spread out, $\times 7$. **F**, petal, spread out, $\times 7$. **G**, lateral sepal, spread out, $\times 7$. **H**, lip from above, natural position, $\times 12$. **I**, lip, spread out, $\times 12$. **J**, column, ventral view, $\times 14$. **K**, column, quarter view, $\times 14$. **L**, anther cap, $\times 16$. **M**, pollinia, $\times 16$. **N**, cross section of ovary, \times ca. 10.

Earina santoensis T. Hashimoto, sp. Nov. (Figs. 3~4).

Differto a *E. sigmoidea* inflorescentis anguste triangulari; floribus multioribus et minoribus; sepalo dorsali trinervi; positione labelli brevioris; ovario non profunde sulcato.

Plant epiphytic, to 55 cm high. Rhizome much abbreviated. Pseudobulb small, obscure, concealed by leaf-bases. Leaves distichous, subcoriaceous, articulate; leaf-base equitant, persistent, 3.5~6 cm long; blade lanceolate-linear, unequally and obtusely bilobed at the apex, to 38 cm long, 0.8~1.5 cm broad. Inflorescence terminal, erect, 28~55 cm high; raceme with 9~47 distichous branches, forming a narrowly triangular plane; each branch 1~8 mm long, bearing a bract, 4~8 flowered; bract becomes bristles in flowering after mesophyll crumbling, 2~8 mm long. Bracteoles imbricate, transversely triangular-conduplicate, ca. 2 mm long. Flowers white, resupinate, ca. 3.5 mm long in natural position; dorsal sepal oblong, subacute, 3-nerved, ca. 4.3 mm long, 2 mm broad; lateral sepals obliquely ovate, subacute with an acumen at the apex, 5-nerved, ca. 4.6 mm long, 2.5 mm broad; petals elliptic, obtuse, minutely and bluntly erose at the margins of anterior half, ca. 3.7 mm long, 1.5 mm broad, 3-nerved; lip ovate when expanded, medially constricted in natural position, deflexed at the anterior 1/3 with minutely undulate margins, canaliculate at the posterior 2/3, obscurely saccate at the base, 7-nerved, ca. 4.6 mm long, ca. 3 mm broad when spread out; column semi-terete, decurved above with an apical pair of triangular wings, ca. 3.5 mm long; ovary cylindrical with shallow grooves, 1~8 mm long.

This entity is apparently related to *E. sigmoidea* and *E. valida*, but differs from them by having a narrowly triangular inflorescence, *i.e.*, branches are gradually shortening upwards, smaller and more flowers, 3-nerved petals and the shorter epichile of lip.

Acknowledgements

The author thanks Dr. Tsukasa Iwashina, research representative of the expedition to Vanuatu who gave him superb convenience during the period, Ms. Mutsuko Nakajima for drawings, Mr. Ernest Bani, chief of Environment Unit, Government of Vanuatu for providing administrative facilities in Vanuatu, Mr. Gaston Atuari, assistant of Mr. Bani for his assistance in Espiritu Santo. This study was partially supported by International Scientific Research Program, No. 0841165 from the Ministry of Education, Science, Sports and Culture, Japan.

摘 要

バヌアツ共和国（ニューヘブリデス諸島）のエスピリツ・サント島にある同国最高峰タブエマサナ山の中腹、海拔1000~2000mの雲霧林帯で採集した *Earina* 属の着生種2種を新種として発表する。同属の植物は南太平洋地域に少数種が知られており、バヌアツには *E. valida* だけが知られていた。エスピリツ・サント島からも記載されているが、本文にも記したように、他の地域の記録についても再検討の必要があると思われる。

References

- Kores, P. K., 1991. Orchidaceae, 322~575. In: Smith, A. C., Flora vitiensis nova 5, Nat. Trop. Bot. Gard., Hawaii.
Lewis, B. and P. Cribb, 1989. Orchids of Vanuatu. 164 pp. + 8 pls. Roy. Bot. Gard., Kew.