

The Third Species of the Genus *Pachyplectron* Schltr., Orchidaceae

by

Tamotsu HASHIMOTO*

橋本 保*: ラン科 *Pachyplectron* 属第 3 の種

The genus *Pachyplectron* is endemic to New Caledonia. Until now, two species, namely *P. arifolium* Schltr. and *P. neocaledonicum* Schltr., have been recorded. The third species, a plant without normal leaf, is newly described here.

Pachyplectron aphyllum T. Hashimoto, sp. nov. (Fig. 1 & 2)

Differto a *P. arifolium* planta aphylla, petalis lateralibus subtruncatis cum denticulatis, labello apice deltoideo et subacuto.

Plant terrestrial, saprophytic, 22 cm high on the ground, glabrous. Roots fascicled, slender-tuberous, glabrous. Leaves reduced to scales; scales 11 including basal 3, white with dark brownish splashes, membranaceous; basal scales ovate with an acute or acuminate tapering tip, 8~12 mm long; scapous scales narrowly ovate with an acuminate tapering tip, ca. 15 mm long. Scape simple, white with dark brownish splashes, erect, 21 cm long including a terminal inflorescence. Inflorescence 9 cm long, loosely 6-flowered. Bracteole green at the anterior 1/3, white with dark purplish splashes at the basal 2/3, narrowly ovate-lanceolate with an acute or caudately acuminate tip, clasping, shorter than the ovary, 8~11 mm long. Flowers ca. 1 cm across in natural position; sepals light green with dark purplish dots; dorsal sepal elliptic-ovate, subacute, concave, 1-nerved, 6 mm long, 3 mm broad, forming a hood together with petals; lateral sepals obliquely obovate, long-decurrent on the ovary at the oblique base, with the free portion spreading, acute, 1-nerved, 9.5 mm long, 3.1 mm broad; petals light green with dark margins, subfalcate, subtruncate with minute teeth, 1-nerved, as long as the dorsal sepal, ca. 2.5 mm broad; lip dark purple outside, white inside, medially adnate to the lower half of column, ca. 11 mm long totally, tubular involute with a spatulate and subacute epichile of which an anterior portion is triangular, posteriorly provided a 4~5 mm long, green spur of which bilobed longitudinally, hairy inside; column with yellowish white tips of clinandrium which embrace the anther; anther yellowish chestnut; ovary white with dark purplish splashes, ascending, subcylindric-ovoid, 12 mm long.

NEW CALEDONIA. Near the Great Kaori, Parc Provincial de la Rivière Blue, Dec. 11, 1997, coll. by T. Hashimoto - holotype in TNS.

This new species is closely related to *Pachyplectron arifolium* Schltr. but differs from it by the leafless state, i.e., saprophytic habit, subtruncate with a denticulate apex of petals and the triangular front of the lip.

*Tsukuba Botanical Garden, National Science Museum, Tsukuba, 305. 国立科学博物館 筑波研究資料センター 筑波実験植物園.

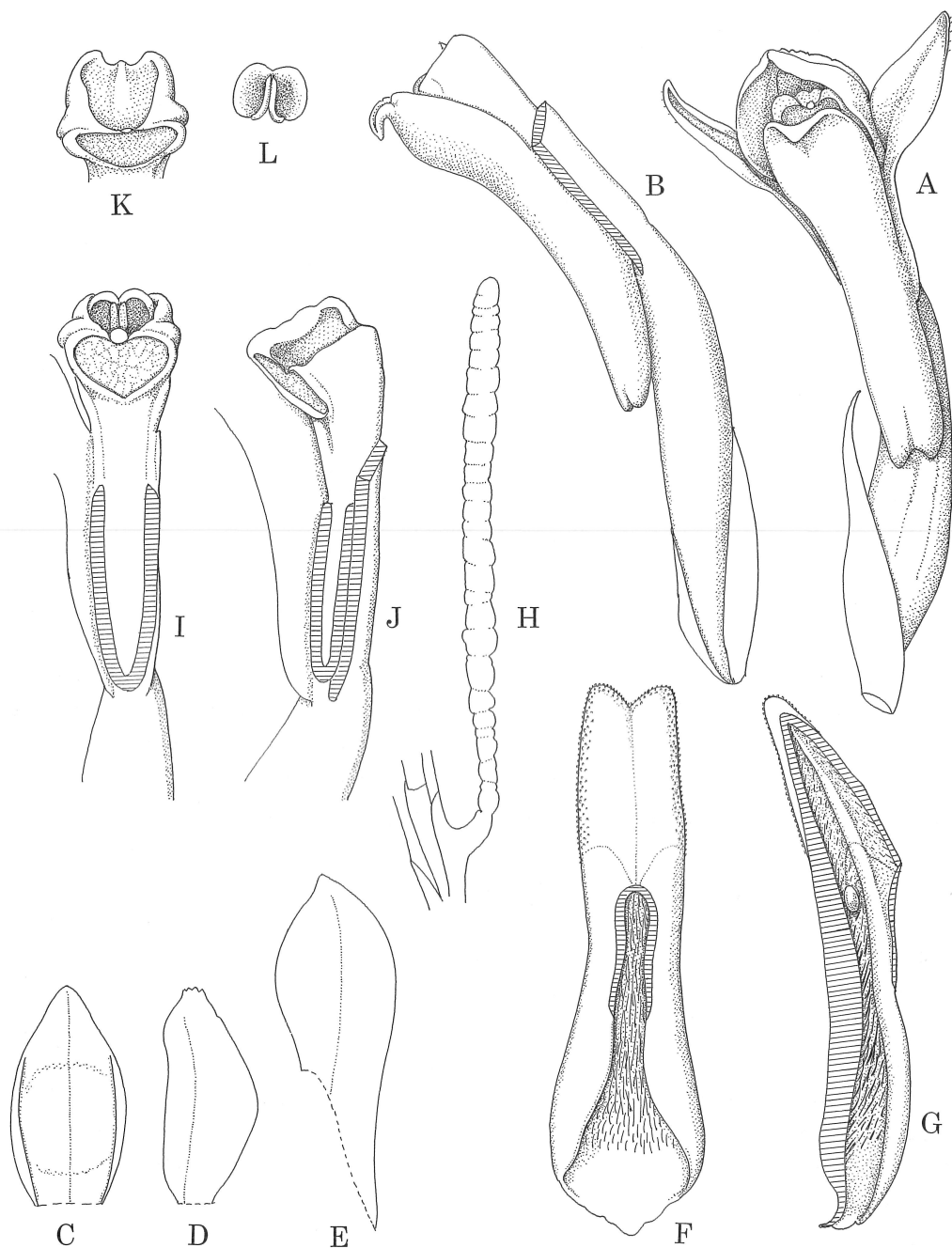


Fig. 1. Flower of *Pachyplectron aphyllum*.

A, flower from front, $\times 5$. B, flower from side, sepals and petals removed, $\times 5$. C, dorsal sepal, spread out, $\times 5$. D, petal, spread out, $\times 5$. E, lateral sepal, spread out, $\times 5$. F, lip from above, natural position, $\times 6$. G, section through lip, $\times 6$. H, hair in lip, $\times 145$. I, column, ventral view, $\times 6.5$. J, column from side, $\times 6.5$. K, top of column from above, $\times 6.5$. L, anther cap, inside view, $\times 6.5$.

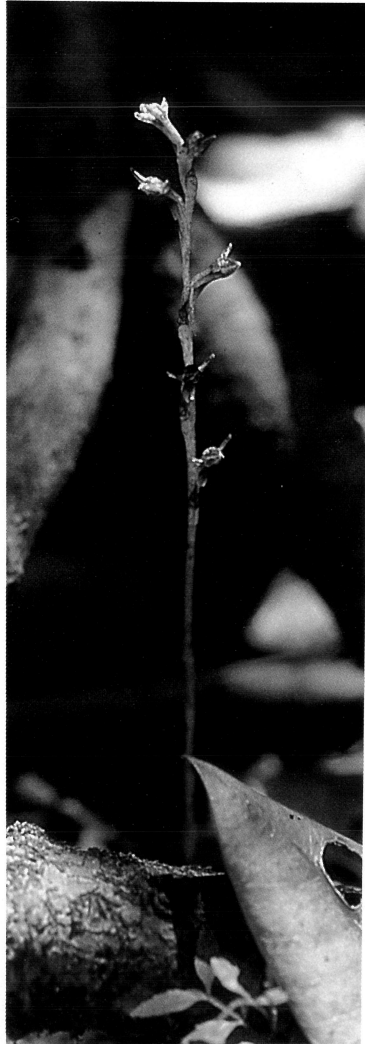


Fig. 2. *Pachyplectron aphyllum*,
plant in habitat.

Acknowledgements

The author acknowledges to Dr. Tanguy Jaffré, responsible official of the botanical laboratory at ORSTOM for providing research facilities in New Caledonia, to Dr. Jean Marie Veillon, plant taxonomist for offering facilities at the herbarium of ORSTOM, to Mr. Jean Christophe Pintaud for guide in the Parc Provincial Rivière Blue, to Dr. Tsukasa Iwashina, research representative of the botanical expedition to Vanuatu for his help during the trip, to Ms. Mutsuko Nakajima for drawings. This study was partially supported by International Scientific Research Program, No. 0841165, Ministry of Education, Science, Sports and Culture, Japan.

摘 要

Pachyplectron 属はニューカレドニア特産で、2種が知られていた。昨年バヌアツの山地植物相調査のおりに同島を経由し、リビエール・ブルー自然公園内の森林内の植物を採集した。その際にこの属第3番目の種を発見したので、ここに発表する。この植物は *P. arifolium* に近縁であるが、普通葉がない腐生種で、花弁（側弁）の先が平たく、平たい部分には微細な刻みがあること、唇弁の先がほぼ三角形で尖っていることから新種と判断した。

References

- Hallé, N., 1977. Orchidacées. 1~565. Aubréville, A. & J.-F. Leroy: Flore de la Nouvelle-Calédonie et dépendances 8. Mus. Nat. d'Hist. Nat., Paris.
- Schlechter, R., 1906. Beiträge zur Kenntnis der Flora von Neu-Kaledonien. Engl. Bot. Jahrb. **39**: 1-274.
-