

Notes on the Systematic Position of *Neptis thisbe*
MÉNÉTRIÈS and its Allies (Lepidoptera,
Nymphalidae)

By

Yoshihiko KUROSAWA

Department of Zoology, National Science Museum, Tokyo

Aldania was originally erected by MOORE (1896) for *Diadema raddei* BREMER, 1861, and was later included in the genus *Neptis* FABRICIUS, 1807, by STICEHL (1906). On the basis of the difference in venation of fore wing, however, ELIOT (1969) recognized *Aldania* again as a full genus and transferred to it *Neptis imitans* OBERTHÜR, 1897, described from Tse-Kou in western China. According to him, the genus *Aldania* MOORE, 1896, is distinguished from *Neptis* FABRICIUS, 1807, and *Phaedyma* C. FELDER, 1861, by the 10th vein of the fore wing, which arises from near the base of the 7th (Fig. 1). In the latter two, the vein in question branches off at a point evidently more proximal, that is, from the cell. Besides, the two species, *raddei* and *imitans*, are peculiar in the wing pattern and differ in this respect from all the other species of the genus *Neptis* and its allies.

Although ELIOT's analysis of the Eurasian and Australian forms of the tribe Neptini is excellent and useful for identifying butterflies of this group, he has made a mistake in deciding the systematic position of several East Asian species, such as *Neptis thisbe* MÉNÉTRIÈS, 1859, *N. yunnana* OBERTHÜR, 1906, and *N. thetis* LEECH, 1890. The wing pattern of these species is decisively of the *Neptis* type, but their venation agrees with the *Aldania* type beyond all doubt. It is probable that ELIOT failed to examine the venation of these species, having been deceived by the pattern of their wings.

On the other hand, SEOK (1938) made a discussion on the Korean species of *Neptis* with yellow wing pattern and concluded that the so-called two species found in Korea, *N. thisbe* MÉNÉTRIÈS, 1859, and *N. themis* LEECH, 1890, were nothing but a single species. He was also deceived by the wing pattern, and overlooked the important difference in wing venation between these butterflies. While the latter species possesses the *Neptis*-type venation, the former unquestionably belongs to *Aldania*, though it appears to have a close relationship with true *Neptis* in the pattern of its wings. For the same reason, *Neptis yunnana* and *N. thetis* also belong to *Aldania*.

Because of the lack of satisfactory material, I cannot decide at present if *Aldania* is generically different from *Neptis* or not. However, I should like to regard the former as a subgenus of the latter, since it is not homologous in the wing pattern,

comprising such *Neptis*-type species as *thisbe*, *yunnana* and *thetis* in addition to isolated *raddei* and *imitans*.

The specimens examined for this study are as follows:

Neptis (s. str.) *themis themis* LEECH, 1890

1 ♂, West China; 1 ♀, Siao-Lou, W. China, P. DEJEAN 1902.

Neptis (s. str.) *themis ilos* FRUHSTORFER, 1909

1 ♂, Mozan, N. Korea, vii. 1941; 1 ♀, Tokushorei, N. Korea, 16. vii. 1938, D. M. SEOK lgt.; 1 ♀, Kôshô, N. Korea, 29. vi. 1938.

Neptis (s. str.) *themis nirei* NOMURA, 1935

2 ♂♂, Taikan, Formosa, 31. v. 1942, C. SAITÔ lgt.; 1 ♂, Meiji, Formosa, 26. v. 1942, C. SAITÔ lgt.; 1 ♂, Sankakuhô, Formosa, 22. vii. 1927, T. KANO lgt.; 1 ♂, Rakuraku, Formosa, 30. v. 1942, C. SAITÔ lgt.; 1 ♀, Horisha, Formosa, iv. 1935.

Neptis (*Aldania*) *thisbe thisbe* MÉNÉTRIÈS, 1859

1 ♂, Mosan Prov., N. Korea, 1. vii. 1937; 1 ♂, Mosan, N. Korea, 1. vii. 1932, K. DOI lgt.; 4 ♂♂, Mt. Hakutô-san, N. Korea, 11–18. vii. 1941, A. M. JANKOWSKY lgt.; 2 ♂♂, Mt. Kasanrei, Kôshô, N. Korea, 18 & 26. vi. 1939; 1 ♂, Kôshô, 25. vi. 1942; 1 ♂, Kôshô, 24. vi. 1939; 1 ♂, Kôshô, 15. vii. 1938; 2 ♂♂, Kishûji, N. Korea, 16. vii. 1942; 1 ♂, Mt. Myokô-zan, 19. vi. 1937, D. M. SEOK lgt.; 1 ♂, Fusen Plateau, N. Korea, vii. 1940; 1 ♀, Ranan, N. Korea, vi. 1930; 3 ♀♀, Kamishôyô, N. Korea, 7. vii. 1943, H. UCHIDA lgt.; 1 ♀, Yôyodô, N. Korea, 30–31. vii. 1943, H. UCHIDA lgt.

Neptis (*Aldania*) *thisbe deliquata* STICHEL, 1909

3 ♂♂, Kwangnung, C. Korea, 3. vi. 1970; 1 ♂, Neien, C. Korea, 6. vii. 1937; 1 ♀, Kaijô, C. Korea, 13. vi. 1937, D. M. SEOK lgt.

Neptis (*Aldania*) *thetis thetis* LEECH, 1890

8 ♂♂, Siao-Lou, W. China, P. DEJEAN 1901 & 1902; 2 ♂♂, Pa-Tse-Fang, W. China, 1893.

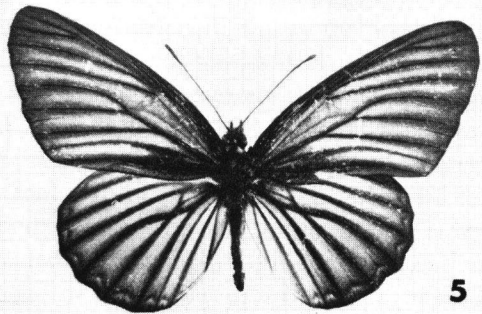
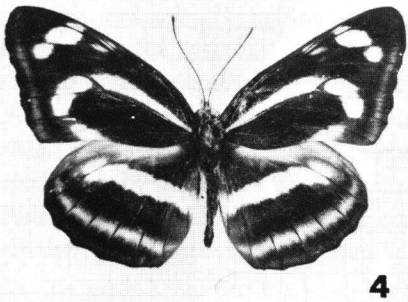
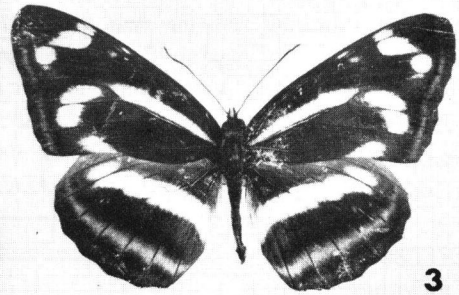
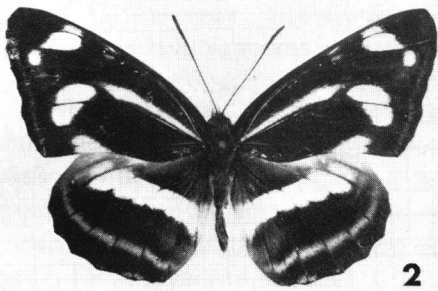
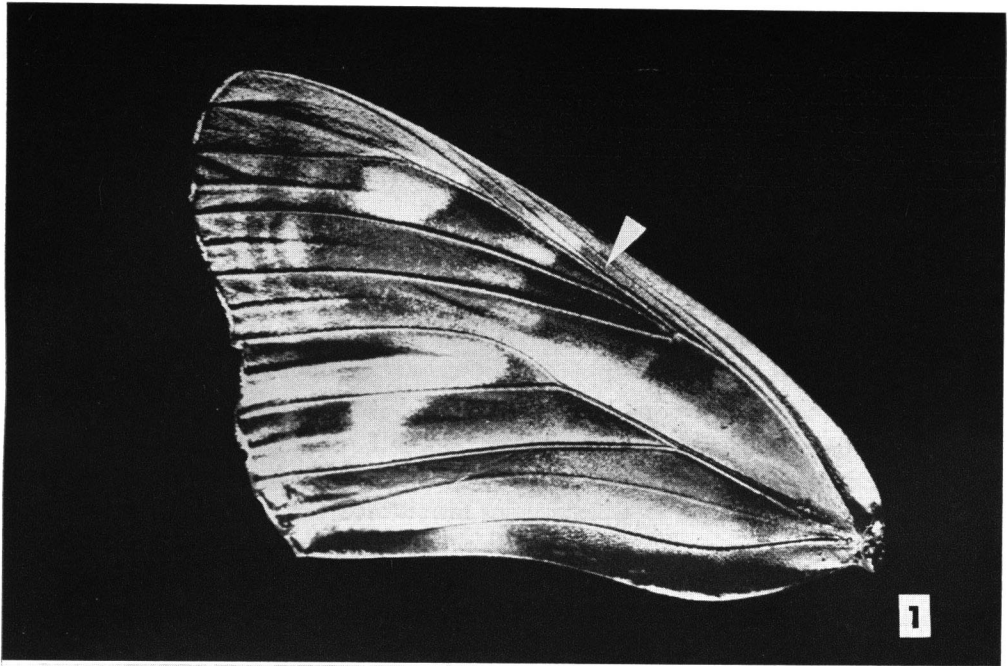
Neptis (*Aldania*) *yunnana tshetverikovi* KURENTZOV, 1936

2 ♂♂, North Kingan Mts., N. Manchuria, 13. vii. 1942, K. IMANISHI's Expedition; 1 ♂, N. Korea.

Neptis (*Aldania*) *raddei raddei* (BREMER, 1861)

1 ♂, Mt. Kaso-zan, Korea, 2. vi. 1940; 1 ♂, Mt. Rôrin-zan, N. Korea, 6. vi. 1938; 1 ♀, Vladivostok, 27. vi. 1965, ALEXEEF lgt.

Figs. 1–5. — 1. Underside of right fore wing of *Neptis* (*Aldania*) *thisbe thisbe* MÉNÉTRIÈS, 1859. The white arrow shows the 10th vein arising near the base of 7th vein. — 2. *Neptis* (*Aldania*) *thisbe thisbe* MÉNÉTRIÈS, 1859, from Mt. Pai-tou-shan, N. Korea. — 3. *Neptis* (*Aldania*) *thetis* LEECH, 1890, from Siao-lu, Szechwan, China. — 4. *Neptis* (*Neptis*) *themis themis* LEECH, 1890, from Szechwan, China. — 5. *Neptis* (*Aldania*) *raddei* (BREMER, 1861), from Mt. Rôrin, N. Korea.



References

- ELIOT, J. N., 1969. An analysis of the Eurasian and Australian Neptini (Lepidoptera, Nymphalidae).
Bull. Brit. Mus. (Nat. Hist.), Suppl. (15). London.
- MOORE, F., 1896. *Lepidoptera Indica*, 3 (26), p. 46.
- SEOK, D. M., 1938. On *Neptis thisbe* MÉNÉTRIÈS from Korea. *Zephyrus*, 7: 244.
- STICHEL, H., 1909. In SEITZ, *Gross-Schmetterlinge der Erde*, 1: 180.