

The Carabinae (Coleoptera, Carabidae) from Quelpart Island, South of Korea

By

Takehiko NAKANE

Department of Zoology, National Science Museum, Tokyo

Through the courtesy of Dr. HABU, National Institute of Agricultural Sciences, I received a few years ago a small series of beetle specimens belonging to Carabinae for identification. All the specimens were collected by Prof. SHIRÔZU and his collaborators during the scientific survey of Kyushu University in Quelpart Island in 1968. Prof. SHIRÔZU kindly advised me to write a paper on these specimens. Here I wish to express my hearty thanks to the above-mentioned gentlemen for their kindness. The material contains six species belonging to the tribe Carabini.

Subtribe Calosomina

1. *Calosoma maximowiczi* (MORAWITZ, 1863)

LAPOUGE (1924) described a subspecies, *taqueti*, from Quelpart Island. The two specimens before me somewhat differ from the examples from Japan in having the upper surface bearing a little more distinct bronzy tints and the pronotum being somewhat opaque owing to the denser punctuation.

Specimens examined. 1 ♂, Mt. Hanna (Kannonji, 600 m—Shiitakegoya, 800 m), 14. vii. 1968, T. DOI lgt.; 1 ♂, Mt. Hanna (Shiitakegoya, 800 m), 16. vii. 1968, T. SHIRÔZU & Y. NISHIDA lgt.

Subtribe Carabina

2. *Hemicarabus tuberculosus* (DEJEAN et BOISDUVAL, 1829)

The tubercle rows of elytra in the Quelpart individuals are relatively large as in the specimens from northern part of Japan.

Specimens examined. 1 ♀, Mt. Hanna (Kannonji, 600 m), 12. vii. 1968, T. SHIRÔZU & Y. NISHIDA lgt.; 2 ♀, Mt. Hanna (Shiitakegoya, 800 m—Ryujinkaku, 1600 m), 16. vii. 1968, T. DOI & Y. NISHIDA lgt.

3. *Carabus fiduciaris gisellae* (CSIKI, 1927)

This species resembles *C. yacoinus* BATES from Japan in appearance, but belongs to the subgenus *Isiocarabus*. The upper surface of the Quelpart race (var. *saishutoicus* CSIKI, 1927=*insularis* LAPOUGE, 1911, nom. preoccup.) is always black with or without bluish or greenish marginal zone on each side.

Specimens examined. 1 ♂, Saishu-U, 23. vii. 1938, H. TAKENAKA lgt.; 1 ♀, Mt. Hanna, Kannonji, 600 m), 12. vii. 1968, T. SHIRÔZU & Y. NISHIDA lgt.; 1 ♀, Mt. Hanna, Kannonji, 600 m — Shiitakegoya, 800 m), 13. vii. 1968, T. SHIRÔZU lgt.; 1 ♀, Mt. Hanna (Ryujinkaku, 1600 m), 20. vii. 1968, Y. NISHIDA lgt.

4. *Carabus sternbergi sternbergi* ROESCHKE, 1896

The systematic position of this species is not quite certain and the species is most closely allied to *C. billbergi* MANNERHEIM, 1827. REITTER (1896) included *billbergi* in *Araeocarabus* with the type-species, *C. roborowskii* SEMENOV, 1887, and LAPOUGE (1931) erected *Apocarabus* for the reception of *billbergi*-group.

Specimens examined. 1 ♂, Seikiho, 29. vii. 1938, H. TAKENAKA lgt.; 1 ♀, Mt. HANNA, 26. vii. 1937, H. TAKENAKA lgt.; 1 ♀, without exact data, vii. 1968, T. SHIRÔZU.

5. *Damaster smaragdinus monilifer* (TATUM, 1847)

TATUM described this form from the "Corean Archipelago," and later LAPOUGE (1910) named the Quelpart race as *tyrannus*, of which a ♀-cotype is illustrated in HAUSER's work (1921). This and the following species are included in the subgenus *Coptolabrus*.

Specimens examined. 1 ♂, Mt. Hanna (Kannonji, 600 m), 13. vii. 1968, T. SHIRÔZU lgt.; 1 ♀, Kinneikutsu, 24. vii. 1968, T. DOI, S. HIDAKA, M. NAKAHARA, S. HAYAKAWA, Y. NISHIDA & S. OMATSU lgt.

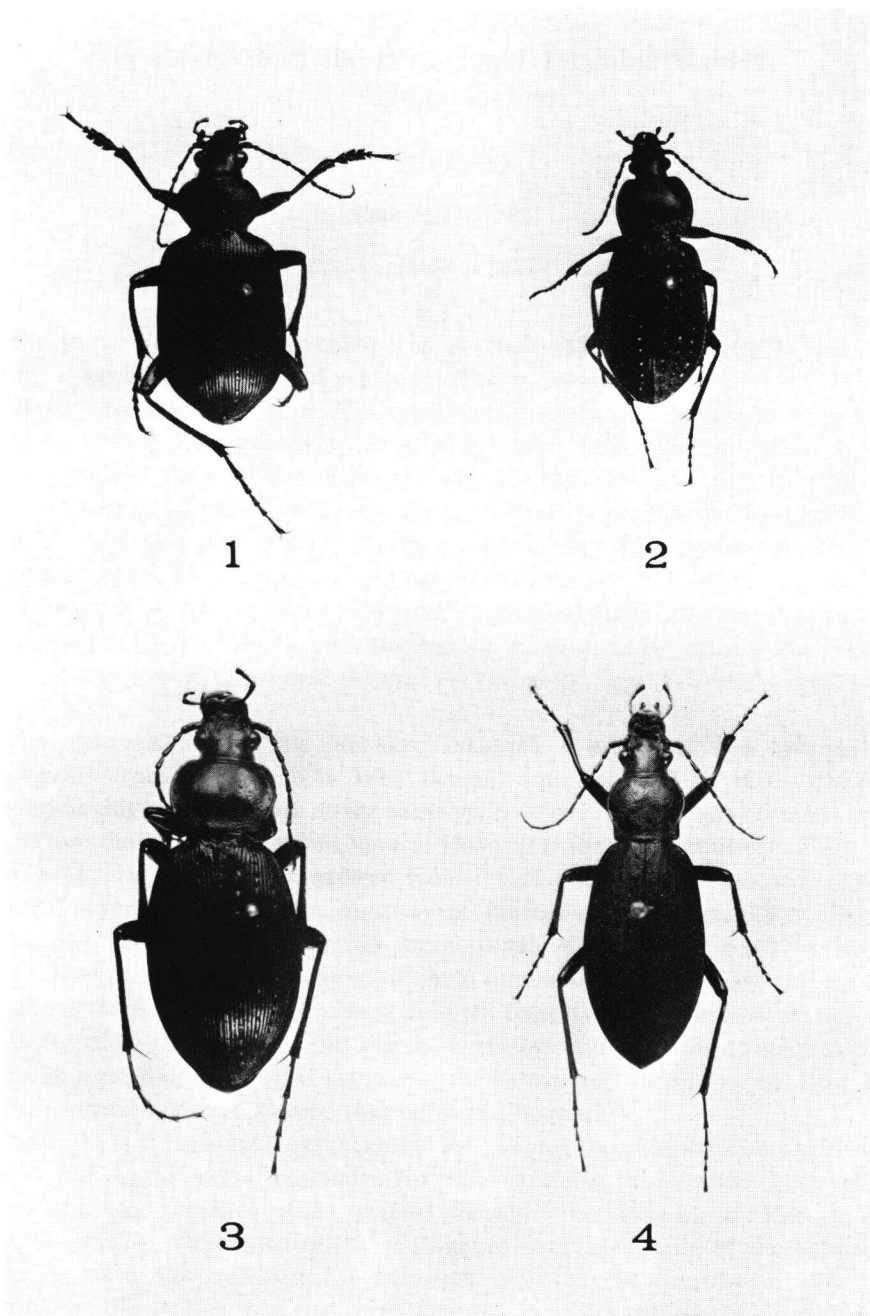
6. *Damaster jankowskii quelpartianus* (HAUSER, 1922)

The metallic colour of pronotum varies from bronzy green to coppery red. As compared with the nominate race of *D. jankowskii*, the present form has relatively narrower body form and finer chain striae of the elytra.

Specimens examined. 3 ♂ 1 ♀, Mt. Hanna (Shiitakegoya, 800 m), 15–16. vii. 1968, T. SHIRÔZU & Y. NISHIDA lgt.; 1 ♀, Seikiho, 29. vii. 1938, H. TAKENAKA lgt.

References

- BREUNING, S. V., 1927. Monographie der Gattung *Calosoma* WEB. 1 Teil. *Koleopt. Rundsch.*, **13** (4/5), (6): 129–232.
 ——— 1932–1937. Bestimmungs-Tabellen der europäischen Coleopteren. 104–110 Hefte. Monographie der Gattung *Carabus* L. Troppau.
 CSIKI, E., 1927. Coleopterorum Catalogus auspiciis et auxilio W. JUNK editus a A. SCHENKLING. Pars 91: Carabidae: Carabinae I. W. Junk, Berlin.
 HAUSER, G., 1921. Die *Damaster-Coptolabrus*-Gruppe der Gattung *Carabus*. G. Fischer, Jena.
 JEANNEL, R., 1940. Les Calosomes (Coleoptera Carabidae). *Mém. Mus. Hist. nat., Paris*, (n. s.), **13**: 1–240.
 LAPOUGE, G. de, 1911. Carabes nouveaux de l'île Quelpart. *Misc. ent.*, **19**: 1–7.
 ——— 1924. Calosomes nouveaux ou mal connus. *Ibid.*, **28**: 29–36.
 REITTER, E., 1896. Bestimmungs-Tabelle der europäischen Coleopteren. 34. Heft. Carabidae. 1. Abtheilung: Carabini. Brünn.



Figs. 1-4. 1. *Calosoma maximowiczi taqueti* LAPOUGE. — 2. *Hemicarabus tuberculatus* DEJEAN et BOISDUVAL. — 3. *Carabus fiduciaris gisellae* CSIKI. — 4. *Damaster jankowskii quelpartianus* HAUSER.

