

Chrysomelid Beetles of Nepal, Collected by the Himalaya Expedition 1979 of the National Science Museum, Tokyo (Part 1)¹⁾

Shinsaku KIMOTO

Biological Laboratory, Department of General Education,
School of Medicine, Kurume University, Kurume

and

Haruo TAKIZAWA

Biological Research Center, The Japan Tobacco & Salt Public Corporation, Hatano
(Communicated by Yoshihiko KUROSAWA)

This is the result of our study on chrysomelid beetles of Nepal, which were collected by the National Science Museum Expedition to East Nepal in 1979. A small number of Nepalese specimens in the collection of the museum were also examined. These chrysomelid beetles excluding Alticinae were classified into 63 species. Four species are described as new to science and 12 species are recorded from Nepal for the first time. All the specimens including the holotypes are deposited in the collection of the National Science Museum, except for some duplicates kept by the authors.

We wish to express our hearty thanks to the members of the expedition for their pains and kindness in collecting these specimens during laborious surveys: Dr. S.-I. UÉNO, Messrs. M. OWADA and M. TOMOKUNI of the National Science Museum, Tokyo, Dr. M. SATÔ of Nagoya Women's University, Nagoya, and Mr. Y. NISHIKAWA of Ohtemon Gakuin University, Osaka. We are also thankful to Dr. Y. KUROSAWA of the museum for the loan of additional material.

Enumeration

Subfamily Clytrinae

1. *Diapromorpha dejeani* (LACORDAIRE, 1848)
2 exs., Dharapani, 1,000 m, Dhankuta Dist., 4. XI. 1979, M. TOMOKUNI leg.;
1 ex., Bahrabise, 820 m, Sindhu Dist., 9. XI. 1979, M. TOMOKUNI leg.
Distribution. Nepal, Sikkim, India.

Subfamily Cryptocephalinae

- 2*. *Adiscus nigroplagiatus* (JACOBY, 1903) (Fig. 1)
1 ex., Kenja, 1,620 m, Solukhumbu Dist.—Changma, 2,200 m, Ramechhap Dist.,

1) This study is supported by the Grants-in-aid for Overseas Scientific Survey Nos. 404101 and 57043055 from the Ministry of Education, Science and Culture, Japan.

* Species with an asterisk is recorded from Nepal for the first time.

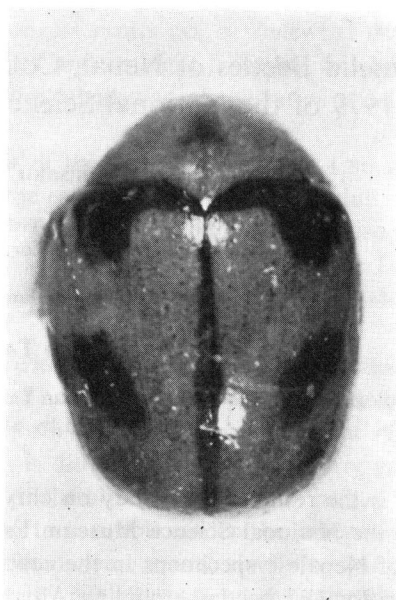


Fig. 1. *Adiscus nigloplagiatus* (JACOBY).
(Photo by S. KIMOTO.)

13. X. 1979, M. TOMOKUNI leg.

Distribution. Nepal, India, Thailand.

3*. *Cryptocephalus deficiens* SUFFRIAN, 1854

1 ex., Godawari, 1,500 m, 28. IX. 1979, M. SATÔ leg.

Distribution. Nepal, N. India, Assam.

4. *Cryptocephalus exulans* SUFFRIAN, 1854

1 ex., Phakding, 2,580 m—Nangbug, 2,550 m, Solukhumbu Dist., 5. X. 1979, M. TOMOKUNI leg.

Distribution. Nepal, Sikkim, India, Tibet.

Subfamily Eumolpinae

5. *Basilepta kumatai* KIMOTO et TAKIZAWA, 1973

1 ex., Tanphedi, Tare Bhir, 1,440–1,900 m, 22. IX. 1979, M. SATÔ leg.

Distribution. Nepal.

6. *Pagria signata* (MOTSCHULSKY, 1858)

1 ex., Godawari, 1,500 m, 28. IX. 1979, M. SATÔ leg.; 2 exs., Kirantichhap, 1,100–1,300 m, Dolakha Dist., 19. X. 1979, M. TOMOKUNI leg.; 2 exs., Dharapani, 1,000 m, Dhankuta Dist., 4. XI. 1979, M. TOMOKUNI leg.; 1 ex., Tini Odhar, 730 m, Chak Khola, Kabhre, 9. XI. 1979, M. SATÔ leg.; 1 ex., Bahrabise, 820 m, Sindhu Dist., 9. XI. 1979, M. TOMOKUNI leg.

Distribution. Nepal, India, Burma, Vietnam, China, Siberia, Korea, Japan, Ryukyu Is., Taiwan, Philippines, Indonesia, Micronesia.

7*. *Demotina modesta* BALY, 1874

* Species with an asterisk is recorded from Nepal for the first time.

2 exs., Godawari, 1,500 m, 21. IX. 1979, M. SATÔ leg.

Distribution. Nepal, Taiwan, China, Korea, Japan, Ryukyu Is.

8*. *Pachnephorus lewisii* BALY, 1878

1 ex., Gorjagong, 1,900–2,100 m, Terhathum Dist., 28. X. 1979, M. TOMOKUNI leg.

Distribution. Nepal, India, Thailand, Cambodia, Laos, Vietnam, China, Taiwan.

9. *Trichotheca hirta* BALY, 1860

7 exs., Nangbug, 2,600 m, Solukhumbu Dist., 5. X. 1979 (some by light trap), M. SATÔ & M. TOMOKUNI leg.; 1 ex., Nangbug, 2,550 m—Surke, 2,290 m, Solukhumbu Dist., 6. X. 1979, M. TOMOKUNI leg.; 2 exs., Kharte Danda, 2,700–3,081 m, Solukhumbu Dist., 7. X. 1979, M. SATÔ leg.; 1 ex., Dudh Kosi, 1,560 m, Solukhumbu Dist., 8. X. 1979, M. SATÔ leg.; 1 ex., Lukla, 2,830 m—Phakding, 2,580 m, Solukhumbu Dist., 29. XI. 1979, M. TOMOKUNI leg.; 2 exs., Phakding, 2,580 m—Namche Bazar, 3,440 m, Solukhumbu Dist., 30. XI. 1979, M. TOMOKUNI leg.

Distribution. Nepal, Burma.

10. *Platycorynus pyrophorus* (PARRY, 1843)

22 exs., Mayangdi Khola, Tarakett, 18. V. 1974, J. KAMEI leg.

Distribution. Nepal, India, Burma, Laos, Vietnam, China.

Subfamily Chrysomelinae

11. *Agrosteomela indica indica* (HOPE, 1831)

1 ex., Surke, 2,220–2,450 m, Solukhumbu Dist., 6. X. 1979, S. UÉNO leg.; 1 ex., Manidingma, 2,240 m, Solukhumbu Dist., 8. X. 1979, M. SATÔ leg.; 1 ex., Minchhindhap Danda, 2,300–2,950 m, Terhathum Dist., 28. X. 1979, M. TOMOKUNI leg.

Distribution. Nepal, Bhutan, Sikkim, India, Burma.

12. *Chrysolina vishnu* (HOPE, 1831)

1 ex., Lukla, 2,830 m—Phakding, 2,580 m, Solukhumbu Dist., 29. IX. 1979, M. TOMOKUNI leg.; 4 exs., Lugha, 2,830 m, Solukhumbu Dist., 29. IX. 1979, Y. NISHIKAWA & M. SATÔ leg.; 1 ex., Khari Khola, 1,900 m, Solukhumbu Dist., 8. X. 1979, Y. NISHIKAWA leg.; 1 ex., Shivalaya, 1,800 m, Ramechhap Dist., 15. X. 1979, M. TOMOKUNI leg.; 3 exs., Gonda, 2,200–2,300 m, Dolakha Dist., 15. X. 1979, M. TOMOKUNI leg.; 2 exs., Gokarna Ban, 1,370 m, Kathmandu, 17. X. 1979, M. SATÔ leg.; 2 exs., Minchhindhap Danda, 2,300–2,950 m, Terhathum Dist., 28. X. 1979, M. SATÔ & M. TOMOKUNI leg.; 1 ex., Gorjagong, 1,900–2,100 m, Terhathum Dist., 28. X. 1979, M. TOMOKUNI leg.; 2 exs., Dharapani, 1,000 m, Dhankuta Dist., 4. XI. 1979, Y. NISHIKAWA leg.; 1 ex., Drumthali, 2,420 m, Sindhu Dist., 12. XI. 1979, Y. NISHIKAWA leg.

Distribution. Nepal, Sikkim, India.

13. *Chrysolina inconstans* (WIEDEMANN, 1823)

1 ex., Gokarna Ban, 1,370 m, Kathmandu, 17. X. 1979, M. SATÔ leg.; 1 ex., Taplejung, 1,790 m, Taplejung Dist., 27. X. 1979, M. TOMOKUNI leg.

Distribution. Nepal, India, Sri Lanka.

14. *Ambrostoma mahesa* (HOPE, 1831)
1 ex., Dolangsa, 2,600–2,700 m, Sindhu Dist., 12. XI. 1979, M. TOMOKUNI leg.
Distribution. Nepal.
15. *Potaninia assamensis* (BALY, 1879)
1 ex., Sangridara, 1,250 m, Dhankuta Dist., 4. X. 1979, S. UÉNO leg.
Distribution. Nepal, Assam.
16. *Phratora flavipes* CHEN, 1963
1 ex., Namche Bazar, 3,440 m—Thame Og, 3,800 m, Solukhumbu Dist., 1. X. 1979, M. TOMOKUNI leg.
Distribution. Nepal, Bhutan, Tibet.
17. *Phaedon yodai* CHÛJÔ, 1966
1 ex., Womhasa, 3,850 m—Namche Bazar, 3,440 m, Solukhumbu Dist., 4. X. 1979, M. TOMOKUNI leg.
Distribution. Nepal.

Subfamily Galerucinae

18. *Doryxena grossa* HOPE, 1831
1 ex., Tanaphedi, Tare Bhir, 1,440–1,900 m, 22. IX. 1979, M. SATÔ leg.
Distribution. Nepal, Assam.
19. *Pyrrhalta darjeelingensis* KIMOTO, 1979
1 ex., Chitre, Terhathum Dist., 1. XI. 1979, M. TOMOKUNI leg.
Distribution. Nepal, N. India.
20. *Galerucella placida* (BALY, 1878)
1 ex., Nangarpa, 2,000 m, Sindhu Dist., 11. XI. 1979, Y. NISHIKAWA leg.
Distribution. Nepal, India, Afghanistan, Burma, Sumatra, Java.
21. *Pseudadimonia variolosa* (HOPE, 1831)
1 ex., Phakding, 2,580 m—Nangbug, 2,550 m, Solukhumbu Dist., 5. X. 1979, M. TOMOKUNI leg.
Distribution. Nepal, India, Burma, Thailand, China.
- 22*. *Apophyllia maculata* KIMOTO, 1977
1 ex., Kenja, 1,620 m, Solukhumbu Dist., 13. X. 1979, M. TOMOKUNI leg.
Distribution. Nepal, Bhutan.
23. *Nepalogaleruca elegans elegans* KIMOTO, 1970
1 ex., Dramo, 3,500 m, Solukhumbu Dist., 29. IX. 1979, S. UÉNO leg.; 1 ex., Luglha, 2,830 m, Solukhumbu Dist., 29. IX. 1979, M. SATÔ leg.; 1 ex., Poyan, 2,780 m, Solukhumbu Dist., 6. X. 1979, M. SATÔ leg.; 1 ex., Ringmo, 2,780 m—Khamje, 2,800 m, Solukhumbu Dist., 10. X. 1979, M. TOMOKUNI leg.; 1 ex., Lamjura La, 3,530 m—Sete, 2,600 m, Solukhumbu Dist., 12. X. 1979, M. TOMOKUNI leg.; 1 ex., Junbesi, 2,670 m—Lamjura La, 3,530 m, Solukhumbu Dist., 12. X. 1979, M. TOMOKUNI leg.; 1 ex., Changma, 2,200–2,350 m, Ramechhap Dist., 14. X. 1979, Y. NISHIKAWA leg.
Distribution. Nepal.
24. *Nepalogaleruca elegans angustilineata* KIMOTO et TAKIZAWA, 1972

1 ex., Magarka Danda, 3,000–3,150 m, W. of Tinsnag La, Sindhu Dist., 13. XI. 1979, S. UÉNO leg.

Distribution. Nepal.

25. *Cneorane tibialis* CHÛJÔ, 1966

1 ex., Pokhara—Suiket, Nepal, 28. V. 1969, T. MIYASHITA leg.

Distribution. Nepal.

26*. *Medythia suturalis* (MOTSCHULSKY, 1858)

2 exs., Palati, 1,200 m, Sindhu Dist., 9. XI. 1979, S. UÉNO & M. TOMOKUNI leg.

Distribution. Nepal, India, Burma, Thailand, Cambodia, Vietnam, Malaya, Philippines, Hainan Is., S. China, Taiwan, Ryukyu Is., Sumatra, Java, Celebes.

27*. *Khasia kraatzi* JACOBY, 1899

1 ex., Godawari, 1,500 m, 28. IX. 1979, M. SATÔ leg.

Distribution. Nepal, Assam, Burma, Punjab.

28. *Hoplasoma sexmaculata* (HOPE, 1831)

1 ex., Dhankuta—Mure, 1,200–2,150 m, 26, 27. VI. 1963, Lep. Soc. Japan Expt. 1963 to Nepal Himalaya.

Distribution. Nepal, Bhutan, India, SW China.

29. *Mimastra cyanura* (HOPE, 1831)

1 ex., Dana, C. Nepal, 1. VI. 1969, T. MIYASHITA leg.; 1 ex., S.—BIRTHANTI, C. Nepal, 29. V. 1969, T. MIYASHITA leg.

Distribution. Nepal, India, Kashmir, Punjab.

30. *Mimastra gracilis* BALY, 1878

2 exs., Dudh Kosi, 1,560 m, 21. IX. 1979, M. SATÔ leg.; 3 exs., Kharte Danda, 2,700–3,081 m, Solukhumbu Dist., 7. X. 1979, M. SATÔ leg.; 1 ex., Kharikhola, 2,050 m, Solukhumbu Dist., 7. X. 1979, S. UÉNO leg.

Distribution. Nepal, Sikkim, Bhutan, China, Kashmir.

31. *Mimastra fulva* KIMOTO et TAKIZAWA, n. sp. (Fig. 2)

General color yellowish brown, antenna dark reddish brown, legs yellowish brown with tarsi somewhat infuscate, ventral surfaces of metathorax and abdomen black with apical part of fifth abdominal segment brownish in various degree.

Head nearly as broad as prothorax, rounded anteriorly and narrowed behind eye; vertex nearly smooth, shining, sparsely impressed by minute punctures; frontal tubercle moderately raised, subtriangular, contiguous, shallowly grooved medially, its anterior corner extending forward between antennal insertions. Antenna slender, distinctly longer than length of body; first segment long, club-shaped; second shortest, nearly 1/3 as long as first; third nearly twice as long as second; fourth 1 1/3 times as long as third; fifth slightly shorter than fourth, and fifth to seventh subequal to one another in length and shape; eighth slightly shorter than seventh, and eighth to tenth subequal to one another in length and shape; eleventh subequal to tenth in length but its apex pointed. Pronotum transverse, 1 1/3 times as broad as long, widest nearly at anterior margin and gradually narrowed posteriorly, and with slight constrict-

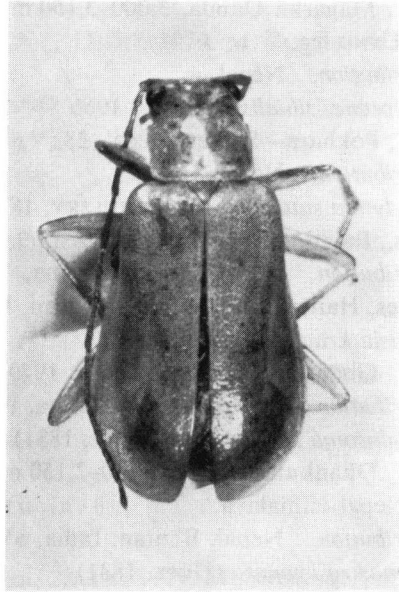


Fig. 2. *Mimastra fulva* n. sp.
(Photo by S. KIMOTO.)

tion at 1/3 from basal margin; anterior margin slightly arched anteriorly and basal margin nearly straight; anterior and posterior corners each with a setigerous pore, and anterior corner distinctly thickened and posterior corner slightly so; dorsal surface smooth, shining, sparsely impressed by minute punctures, and with a pair of shallow depressions laterally. Scutellum subtriangular, rounded apically and its surface smooth, shining, Elytron nearly 3 1/2 times as long as broad, slightly widened behind middle and rounded apically; surface distinctly and irregularly punctate, and sparsely covered with some short hairs subapically.

Length: 6.5–6.7 mm.

Distribution. Nepal.

Holotype: Luklha, 2,830 m—Phakding, 2,580 m, Solukhumbu Dist., 29. IX. 1979, M. TOMOKUNI leg. Paratypes: 1 ex., Changma, 2,200–2,350 m, Ramechhap, Janakpur, E. Nepal, 14. X. 1979, Y. NISHIKAWA leg.; 1 ex., Surke, 2,290 m, Solukhumbu, 6. X. 1979, M. SATÔ leg.

This new species somewhat resembles *Mimastra gracilicornis* JACOBY from Burma, but differs in having the antenna and legs more brownish, the second antennal segment nearly half as long as third, and pronotum with a pair of lateral depressions shallower.

32. *Trichomimastra kumatai* KIMOTO et TAKIZAWA, 1972

1 ex., Godawari, 1,500 m, 28. IX. 1979, M. SATÔ leg.

Distribution. Nepal.

33. *Calomicrus iniquus* (WEISE, 1889)

1 ex., Phaplu, 2,380 m, Solukhumbu Dist., 13, 14. X. 1979, M. SATÔ leg.

Distribution. Nepal, Bhutan, W. China.

34. *Monolepta himalayaensis* KIMOTO, 1970

1 ex., Kirantichhap, 1,100–1,320 m, Dolakha Dist., 19. X. 1979, M. TOMOKUNI leg.

Distribution. Nepal, N. India.

35*. *Monolepta madrasensis* WILCOX, 1973

= *Monolepta lineata* WEISE, 1915 (not *Monolepta lineata* KARSCH, 1882)

1 ex., Kathmandu, 18–27. IX. 1979, M. SATÔ leg.; 1 ex., Godawari, 1,500 m, 29. IX. 1979, M. SATÔ leg.

Distribution. Nepal, Bhutan, India, Thailand.

36. *Monolepta orientalis* JACOBY, 1889

1 ex., Kaping, 1,150–1,300 m, Sindhu Dist., 21. X. 1979, M. TOMOKUNI leg.; 1 ex., Hile, 2,070 m, Dhankuta Dist., 2. XI. 1979, M. SATÔ leg.; 1 ex., Kirantichhap, 1,250 m, Dolakha Dist., 18. X. 1979, S. UÉNO leg.

Distribution. Nepal, Assam, India, Burma, Sri Lanka.

37. *Monolepta satoi* KIMOTO et TAKIZAWA, n. sp. (Fig. 3)

Body ovate, moderately convex, gradually narrowed anteriorly and posteriorly. Head and prothorax yellowish brown, scutellum pitchy black, elytron blackish with a large, elongate marking yellowish brown, ventral surface of prothorax yellowish brown, and meso- and metathorax black, abdomen entirely black, antenna pitchy black with three basal segments brownish; legs yellowish brown with tarsi and apex of tibiae pitchy brown.

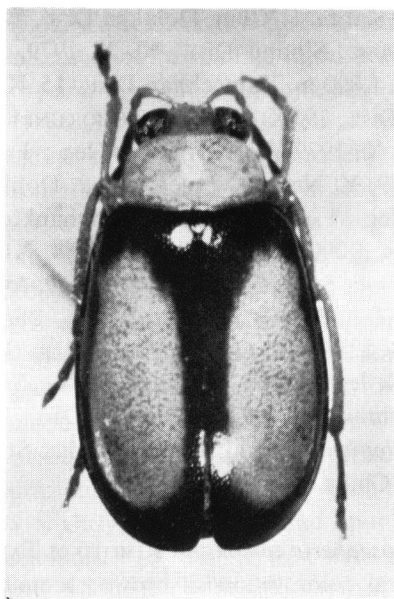


Fig. 3. *Monolepta satoi* n. sp.
(Photo by S. KIMOTO.)

Head with vertex not very convex, surface wrinkled, sparsely impressed by fine punctures, interocular space flattened, relatively narrow but slightly wider than width of eye, frontal tubercles not well developed, feebly raised, transverse, subquadrate, contiguous and its anterior tip inserted between antennal insertions. Antenna relatively slender, extending nearly to the middle of elytron; first segment long, somewhat club-shaped; second shortest, nearly 1/3 as long as first; third subequal to second in length; fourth nearly three times as long as third; fourth to ninth subequal to one another in length and shape; tenth slightly shorter than ninth; eleventh 1 1/4 times as long as tenth and its apex pointed. Pronotum convex, transverse, nearly 1 3/4 times as wide as long, feebly rounded at side, widest slightly before basal corner and narrowed anteriorly, anterior margin nearly straight and posterior margin distinctly arched posteriorly, dorsal surface without any distinct depression laterally, closely impressed by distinct punctures. Scutellum small, subtriangular, smooth, nearly impunctate. Elytra hardly broader at base than prothorax, gradually widened behind and again narrowed towards apices, dorsal surface rather closely impressed by distinct punctures.

Length: 3.6 mm.

Distribution. Nepal.

Holotype: Godawari, 1,500 m, 21. IX. 1979, M. SATÔ leg. Paratopotypes: 5 exs., same data as the holotype. Paratypes: 5 exs., Shivalaya, 1,800 m, Ramechhap Dist., 15. X. 1979, M. TOMOKUNI leg.

This new species somewhat resembles *Monolepta bimaculipennis* KIMOTO from Bhutan, but differs in having the elytral marking much larger and elongate, and legs almost entirely yellowish brown with tarsi and apex of tibiae somewhat infuscate.

38. *Monolepta signata* (OLIVIER, 1808)

1 ex., Kabre, 1,760 m, Dolakha Dist., 7. X. 1979, Y. NISHIKAWA leg.; 1 ex., Kabre, 1,200–1,300 m, Sindhu Dist., 10. X. 1979, M. TOMOKUNI leg.; 1 ex., Khimti Khola, Shivalaya, 1,800 m, Ramechhap Dist., 15. X. 1979, S. UÉNO leg.; 1 ex., Shera, 1,420 m, Dolakha Dist., 19. X. 1979, M. TOMOKUNI leg.; 1 ex., Kirantichhap, 1,250 m, Dolakha Dist., 19. X. 1979, Y. NISHIKAWA leg.; 1 ex., Taplejung, 1,800 m, Taplejung Dist., 25. X. 1979, Y. NISHIKAWA leg.; 1 ex., Dobhan, 780 m, Terhathum Dist., 27. X. 1979, M. SATÔ leg.; 1 ex., Hile, 2,070 m, Dhankuta Dist., 2. XI. 1979, M. SATÔ leg.; 1 ex., Dharapani, 1,000 m, Dhankuta Dist., 4. XI. 1979, M. TOMOKUNI leg.; 1 ex., Sardhu Khola, 350 m, Sunsari Dist., 6. XI. 1979, M. SATÔ leg.; 1 ex., Palati, 1,200 m, Sindhu Dist., 9. XI. 1979, M. SATÔ leg.; 1 ex., Budipa, 1,160 m, Sindhu Dist., 10. XI. 1979, M. SATÔ leg.; 9 exs., Ghorthali, 1,600 m, Sindhu Dist., 10. XI. 1979, S. UÉNO & Y. NISHIKAWA leg.; 1 ex., Gulgul, 1,780 m, Sindhu Dist., 14. XI. 1979, M. SATÔ leg.; 1 ex., Shivinokhola, 1,920 m, Sindhu Dist., 14. XI. 1979, M. SATÔ leg.

Distribution. Nepal, Bhutan, India, Sri Lanka, Burma, Hainan Is., Indo-China, Thailand, China.

39. *Paleosepharia tomokunii* KIMOTO et TAKIZAWA, n. sp. (Fig. 4)

General color yellowish brown; scutellum black; elytron yellowish brown with

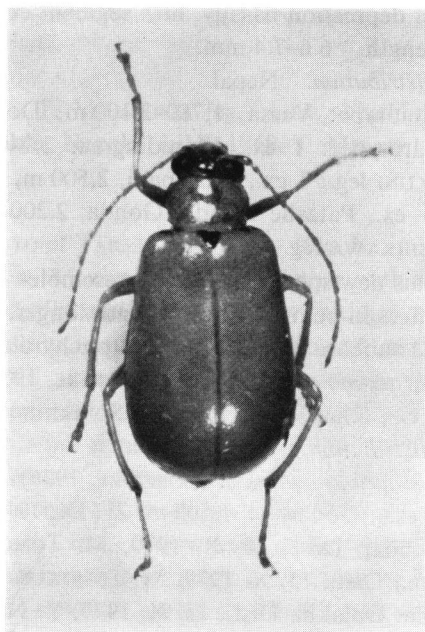


Fig. 4. *Paleosepharia tomokunii* n. sp.
(Photo by S. KIMOTO.)

exterior half of basal margin and basal portion of interior margin of epipleura shining black; antenna and legs yellowish brown; ventral surface of metathorax and apex of fifth abdominal segment black.

Head with vertex not much raised, sparsely impressed by minute punctures; frontal tubercle feebly raised, delimited behind by a distinct transverse furrow, surface smooth, shining, impunctate; clypeus distinctly raised, smooth, shining, impunctate. Antenna filiform, nearly $3/4$ as long as body length; first segment long, somewhat club-shaped; second nearly $2/5$ as long as first; third $1\ 1/2$ times as long as second, much slender; fourth nearly $1\ 1/2$ times as long as third; fifth subequal to fourth in length and shape; sixth slightly longer than fifth; seventh to ninth subequal to sixth in length and shape; tenth slightly shorter than ninth in length; eleventh $1\ 1/4$ times as long as tenth and its apex pointed. Pronotum convex, transverse, nearly $1\ 2/5$ times as wide as long, widest at $1/3$ from anterior corner, slightly narrowed anteriorly and more strongly so posteriorly, and distinctly constricted at $1/3$ from basal corner; anterior margin nearly straight and posterior margin arched posteriorly with median portion almost straight, lateral margin sharp, somewhat reflexed, anterior corner slightly thickened and posterior corner pointed, each with a seta-bearing pore, dorsal surface with a shallow transverse furrow which is interrupted at middle, very sparsely impressed by minute punctures. Scutellum small, convex, subtriangular, surface finely granulate. Elytra much broader at base than prothorax, slightly restricted behind shoulders, dorsal surface closely impressed by distinct punctures. In male elytron with a pair of depressions basally, fifth abdominal segment trilobed. In female, elytron without any

distinct depression basally, fifth segment entire.

Length. 6.6–7.4 mm.

Distribution. Nepal.

Holotype: Yarsa, 1,780–2,100 m, Dolakha Dist., 17. X. 1979, M. TOMOKUNI leg. Paratypes: 1 ex., Manidingma, 2,240 m, Solukhumbu Dist., 8. X. 1979, M. TOMOKUNI leg.; 1 ex., Chisapani, 2,500 m, Dolakha Dist., 17. X. 1979, M. TOMOKUNI leg.; 1 ex., Patashe Danda, Gonda, 2,200–2,400 m, Dolakha, E. Nepal, 15. X. 1979, Y. NISHIKAWA leg.

This new species somewhat resembles *Paleosepharia fulvicornis* CHEN from China, but differs in being the body length longer, and having pronotum more distinctly constricted subbasally and scutellum pitchy black.

40*. *Macrima aurantiaca* (LABOISSIERE, 1936)

1 ex., Kharikhola, 2,050 m, Solukhumbu Dist., 7. X. 1979, S. UÉNO leg.

Distribution. Nepal, China.

41. *Macrima pallida* (LABOISSIERE, 1936)

4 exs., Godawari, 1,500 m, 21. IX. 1979, M. SATÔ leg.; 3 exs., Shivalaya, 1,800 m, Ramechhap Dist., 15. X. 1979, M. TOMOKUNI leg.; 1 ex., Gonda, 2,200–2,300 m, Dolakha Dist., 15. X. 1979, M. TOMOKUNI leg.; 1 ex., Patashe Danda, Gonda, 2,200–2,440 m, Dolakha Dist., 15. X. 1979, Y. NISHIKAWA leg.; 1 ex., Yarsa, 1,780–2,100 m, Dolakha Dist., 17. X. 1979, M. TOMOKUNI leg.; 1 ex., Taplejung, 1,790 m, Taplejung Dist., 27. X. 1979, M. TOMOKUNI leg.; 1 ex., Shivinokhola, 1,900–2,000 m, Sindhu Dist., 14. XI. 1979, M. TOMOKUNI leg.; 2 exs., Kathmandu, 1–18. VI. 1963. Lep. Soc. Japan Expd. 1963 to Nepal Himalaya.

Distribution. Nepal, Bhutan, N. India.

42. *Aulacophora indica* (GMELIN, 1790)

1 ex., Palati, 1,200 m, Sindhu Dist., 9. XI. 1979, M. SATÔ leg.

Distribution. Nepal, Bhutan, India.

43. *Agetocera hopei* (BALY, 1865)

1 ex., Kathmandu, C. Nepal, 15. IX. 1969, T. MIYASHITA leg.

Distribution. Nepal, Bhutan, N. India, Burma, Tibet, Java.

44. *Paridea octomaculata* (BALY, 1880)

1 ex., Godawari, 1,500 m, 21. IX. 1979, M. SATÔ leg.; 1 ex., Yarsa, 1,960 m, Dolakha Dist., 17. X. 1979, M. OWADA leg.; 1 ex., Kaping, 1,150–1,300 m, Sindhu Dist., 21. X. 1979, M. TOMOKUNI leg.; 3 exs., Dharapani, 1,000 m, Dhankuta Dist., 4. XI. 1979, Y. NISHIKAWA & M. TOMOKUNI leg.

Distribution. Nepal, Bhutan, Assam, India, Tibet.

45. *Paridea perplexa* BALY, 1879

2 exs., Changma, 2,200–2,350 m, Ramechhap Dist., 14. X. 1979, Y. NISHIKAWA leg.; 2 exs., Minchhindhap Danda, 2,300–2,590 m, Terhathum Dist., 28. X. 1979, M. TOMOKUNI leg.

Distribution. Nepal, India, Burma.

46. *Arthrotus pallidus* LABOISSIERE, 1932

2 exs., Kathmandu, 18–27. IX. 1979, M. SATÔ leg.

Distribution. Nepal, Bhutan, Indo-China.

47. *Arthrothidea nepalensis* (KIMOTO, 1970)

1 ex., Tokcha, C. Nepal, 10. VI. 1969, T. MIYASHITA leg.; 1 ex., Nacheng, 12.

VI. 1969, T. MIYASHITA leg.; 1 ex., Rehe Khola, Nepal, 13. VI. 1969, T. MIYASHITA leg.

Distribution. Nepal, N. India.

48. *Sphenoraia (Sphenoraia) apicalis* KIMOTO et TAKIZAWA, n. sp. (Fig. 5)

General color cupreous black, elytron with apical portion, together with sutural and lateral margins which are narrower basally and wider apically, reddish brown.

Head distinctly narrower than pronotum, rounded anteriorly and narrowed behind eye; vertex convex, slightly depressed at middle of anterior margin, surface wrinkled, sparsely impressed by distinct punctures; frontal tubercle oblique, subquadrate, contiguous, distinctly raised. Antenna slender, slightly shorter than length of body; first segment robust, long, club-shaped; second nearly 1/4 as long as first; third 1 1/3 times as long as second; fourth nearly 2 1/2 times as long as third in length; fifth very slightly shorter than fourth in length; sixth and seventh subequal to fifth in length; eighth slightly shorter than seventh in length and nearly 3/4 as long as fourth; ninth and tenth subequal to eighth in length; eleventh longer than tenth and subequal to fourth in length and its apex pointed. Pronotum transverse, 1 1/2 times as wide as long, anterior margin almost straight on median portion and distinctly produced anteriorly on lateral portion, lateral margin strongly rounded, widest slightly before

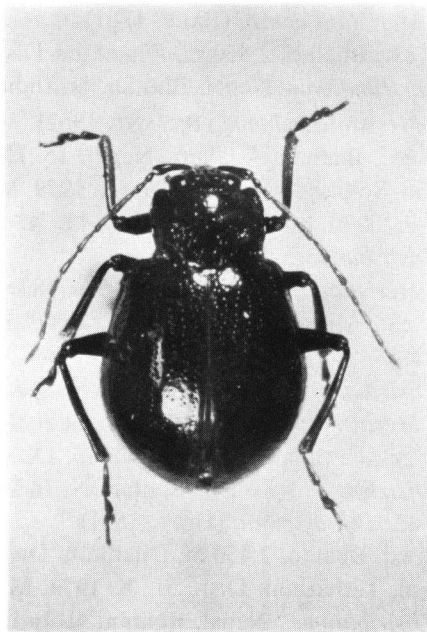


Fig. 5. *Sphenoraia apicalis* n. sp.
(Photo by S. KIMOTO.)

middle, slightly narrowed anteriorly and more strongly so posteriorly, basal margin slightly rounded posteriorly, anterior corner thickened, posterior corner showing nearly a right angle and pointed at tip, each corner with a setigerous puncture; dorsal surface with a pair of shallow impressions laterally and sparsely impressed by distinct punctures, and their interstices smooth and shining. Scutellum semicircular, surface smooth, shining, impunctate. Elytron 2 1/2 times as long as wide, gradually widened posteriorly and rounded at apex, dorsal surface closely impressed by distinct punctures partly arranged in semiregular rows, interstices of punctures smooth, shining.

Length. 6.6–7.1 mm.

Distribution. Nepal.

Holotype: Junbesi, 2,670 m, Solukhumbu, Sagarmatha, 11. X. 1979, E. Nepal, Y. NISHIKAWA leg. Paratopotype: 1 ex., Same data as the holotype. Paratype: 1 ex., Thodung, 3,080 m, Ramechhap, Janakpur, 14. X. 1979, S. UÉNO leg.

This new species somewhat resembles *Sphenoraia maculata* KIMOTO et TAKIZAWA from Nepal, but differs in having the elytral punctures much closer especially on the apical portion and the dorsal surfaces mostly cupreous black, instead of reddish brown with greenish markings.

49. *Sphenoraia (Sphenoraia) bicolor* (HOPE, 1931)

1 ex., Godawari, 27. V. 1969, T. MIYASHITA leg.

Distribution. Nepal, Sikkim, Assam, Burma.

50. *Hylaspes longicornis* BALY, 1865

1 ex., Manidingma, 2,240 m, Solukhumbu Dist., 8. X. 1979, M. SATÔ leg.

Distribution. Nepal, Bhutan, Assam, N. India, Burma.

51. *Meristata dohrni* (BALY, 1861)

1 ex., Bhalko, 2,450 m, Dhankuta Dist., 1. XI. 1979, M. SATÔ leg.

Distribution. Nepal, Bhutan, N. India, Burma.

52. *Meristata pulunini* (BRYANT, 1952)

1 ex., BIRTHANTI—ULLERI, Nepal, 15. IX. 1969, T. MIYASHITA leg.; 2 exs., LUGLHA, 2,830 m, Solukhumbu Dist., 29. IX. 1979, M. SATÔ & Y. NISHIKAWA leg.; 1 ex., JUNBESI, 2,000–2,700 m, Solukhumbu Dist., 11. X. 1979, M. TOMOKUNI leg.

Distribution. Nepal.

53. *Meristata quadrifasciata* (HOPE, 1831)

1 ex., Minchhindhap Danda, 2,300–2,950 m, Terhathum Dist., 28. X. 1979, M. SATÔ leg.

Distribution. Nepal, Bhutan, N. India, Kashmir.

54. *Meristata sexmaculata* (KOLLAR et REDTEMBACHER, 1848)

1 ex., Kathmandu, C. Nepal, 15. IX. 1969, T. MIYASHITA leg.

Distribution. Nepal, Bhutan, N. India, Kashmir.

55. *Meristata spilota* (HOPE, 1831)

1 ex., Bhalko, 2,450 m, Dhankuta Dist., 1. XI. 1979, M. SATÔ leg.; 1 ex., Dorpani, 2,760 m, Terhathum Dist., 31. X. 1979, M. TOMOKUNI leg.

Distribution. Nepal, Bhutan, N. India.

56. *Leptartha fasciata* (JACOBY, 1894)

1 ex., Sebuk Danda, NE of Cutok La, 2,300–2,550 m, Solukhumbu Dist., 6. X. 1979, Y. NISHIKAWA leg.

Distribution. Nepal, N. India.

57. *Spitiella collaris* (BALY, 1878)

1 ex., Dramo, 3,500 m, Solukhumbu Dist., 1. X. 1979, S. UÉNO leg.; 1 ex., Jorsale, 2,800 m, Solukhumbu Dist., 4. X. 1979, M. SATÔ leg.; 1 ex., Lamjura Danda, E. side, 2,880–3,030 m, Solukhumbu Dist., 12. X. 1979, S. UÉNO leg.; 1 ex., BIRTHANTI—ULLERI, Nepal, 30. V. 1969, T. MIYASHITA leg.; 1 ex., Nacheng, C. Nepal, 12. VI. 1969, T. MIYASHITA leg.

Distribution. Nepal, Bhutan, N. India.

Subfamily Hispinae

58. *Dactylispa lohita* MAULIK, 1919 (Fig. 6)

1 ex., Kenja, 1620 m, Solukhumbu Dist.—Changma, 2,200 m, Ramechhap Dist., 13. X. 1979, M. TOMOKUNI leg.

Distribution. Nepal, N. India.

59. *Dactylispa parbatya* MAULIK, 1919

1 ex., Bhalko, 2,450 m, Dhankuta Dist., 1. XI. 1979, M. SATÔ leg.

Distribution. Nepal, Sikkim, India.

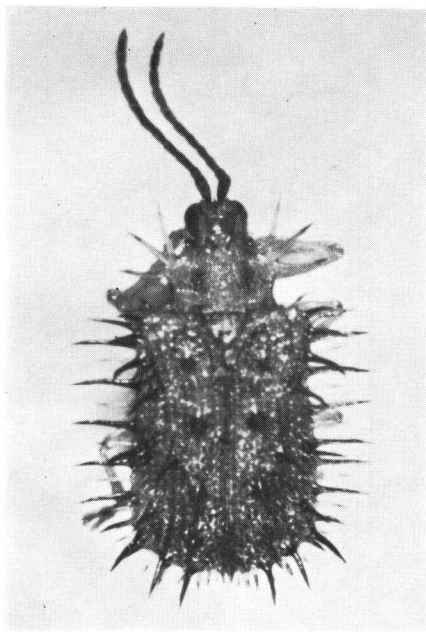
60*. *Dactylispa pradhana* MAULIK, 1919 (Fig. 7)

Fig. 6. *Dactylispa lohita* MAULIK.

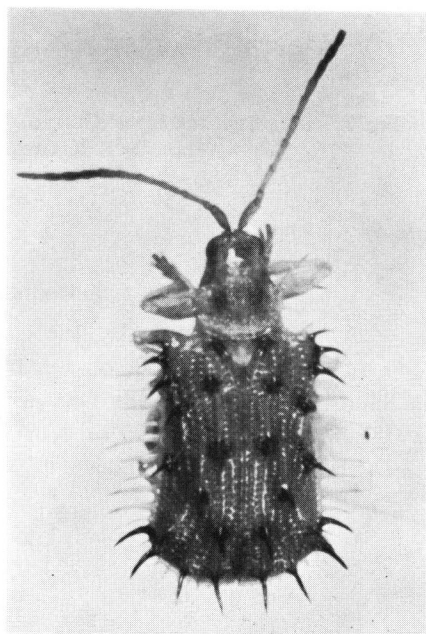


Fig. 7. *Dactylispa pradhana* MAULIK.

(Photo by S. KIMOTO.)

1 ex., Khari La, 3,081 m—Kharikhola, 2,050 m, Solukhumbu Dist., 7. X. 1979, M. TOMOKUNI leg.

Distribution. Nepal, Sikkim.

61*. *Dactylispa xanthopus* (GESTRO, 1898) (Fig. 8)

2 exs., Bhalko, 2,450 m, Dhankuta Dist., 1. XI. 1979, M. TOMOKUNI leg.

Distribution. Nepal, Sikkim.

62. *Platypria hystrix* (FABRICIUS, 1798)

1 ex., Kathmandu, 1–18. VI. 1963, Lep. Soc. Japan Expd. 1963 to Nepal Himalaya.

Distribution. Nepal, Burma, India, Sri Lanka.

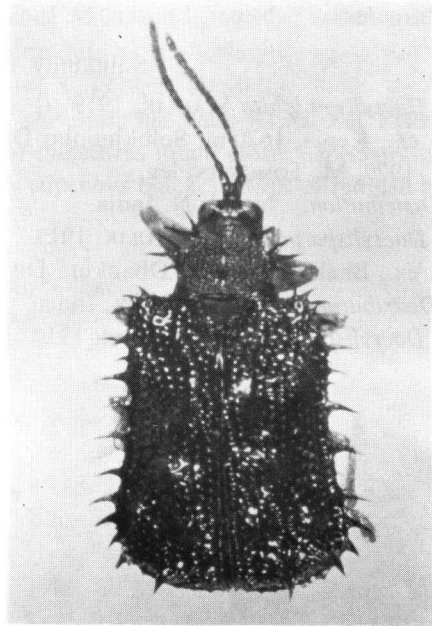


Fig. 8. *Dactylispa xanthopus* (GESTRO).
(Photo by S. KIMOTO.)

Subfamily Cassidinae

63. *Cassida syratica* BOHEMAN, 1865

1 ex., Dharapani, 1,000 m, Dhankuta Dist., 4. XI. 1979, M. TOMOKUNI leg.; 1 ex., Bahrabise, 820 m, Sindhu Dist., 9. XI. 1979, M. TOMOKUNI leg.; 1 ex., Nangarpa, 1,750–2,000 m, Sindhu Dist., 11. XI. 1979, M. TOMOKUNI leg.

Distribution. Nepal, India.