

What is *Cnides rostratus* (Coleoptera, Trechinae) ?

By

Shun-Ichi UÉNO

Department of Zoology, National Science Museum, Tokyo

Abstract The true identity of *Cnides rostratus* MOTSCHULSKY is clarified on the basis of a re-examination of the type specimen. *Cnides laticollis* JEANNEL is synonymized with it. A new name, *C. jeanneli*, is given to the Colombian species currently regarded as *C. rostratus*.

Cnides rostratus MOTSCHULSKY (1862, p. 40) is a small ripicolous trechid beetle originally described from the Isthmus of Panama. It was redescribed by PUTZEYS (1870, p. 189) in his monograph of the oculate species of Trechinae, but his careful account was based on the specimens from Venezuela, which were later named *C. obtusus* by JEANNEL (1958, pp. 734, 735). The latter author (1920, p. 99) regarded a Colombian species as *C. rostratus*, and gave its detailed description in his classic monograph of Trechinae (1927, pp. 62, 63, figs. 419-421). Since then, JEANNEL's view has been widely accepted by the specialists of ground beetles, though no Panamanian specimens have been studied by anyone nor has been made a critical re-examination of MOTSCHULSKY's type.

Through the courtesy of Dr. ROSSOLIMO and Dr. NIKITSKY of the Zoological Museum, Moscow, I was able to examine the unique type of *Cnides rostratus*. It turned out to be identical with *C. laticollis* JEANNEL (1958, p. 734, fig. 11), whose type specimen had previously been identified by BATES with *C. rostratus*. Thus, a new name becomes required for the Colombian species currently regarded as *C. rostratus*.

In the present paper, I am going to report the results of my re-examination of the type materials of both *C. rostratus* MOTSCHULSKY and *C. laticollis* JEANNEL, and to give a new name to *C. rostratus* sensu JEANNEL, nec MOTSCHULSKY. The abbreviations used herein are the same as those explained in other papers of mine.

Before going further, I wish to express my hearty thanks to Dr. Olga L. ROSSOLIMO and Dr. N. B. NIKITSKY of the Zoologicheskij Muzej, Moskovskogo Gosudarstvennogo Universiteta im. M. V. Lomonosova, Moscow, for the loan of MOTSCHULSKY's type of *Cnides rostratus*, to Dr. A. DESCARPENTRIES of the Muséum National d'Histoire Naturelle, Paris, for the loan of JEANNEL's types, and to Mr. P. M. HAMMOND and Dr. Nigel E. STORK of the British Museum (Natural History), London, for the loan of the specimens used by JEANNEL for preparing his account of the Colombian species. I am also indebted to Dr. Mizuko YOSHIYUKI for arranging the loan at Moscow.

Cnides rostratus MOTSCHULSKY, 1862

(Fig. 1)

Cnides rostratus MOTSCHULSKY, 1862, Étud. ent., Dresde, 11, p. 40; type locality: Isthme de Panama.

— CSIKI, 1928, Coleopt. Cat., (98), p. 240. — CASALE & LANEYRIE, 1982, Mém. Biospéol., 9, p. 35.

Cnides laticollis JEANNEL, 1958, Ent. Arb. Mus. Frey, Tutzing, 9, p. 734, fig. 11; type locality: Honda in Colombia. — CASALE & LANEYRIE, 1982, Mém. Biospéol., 9, p. 35. [Syn. nov.]

The holotype of *Cnides rostratus* MOTSCHULSKY bears four labels, a green circular label without word, a white type label, a green name-label inscribed “*Cnides rostratus* Mots., Panama” and an undecipherable word, and a red label without word. It is in a fair condition, though the body was wholly covered with remnants of fungi and a small lateral portion of the apical part of the right elytron was nibbled by dermestid. It was cleaned and remounted by myself in 1984.

Though larger (3.55 mm in the length of body) than any of the type series of *C. laticollis* JEANNEL (2.75–3.40 mm), this specimen agrees well with the latter, and JEANNEL’s name is regarded herewith as a junior synonym of MOTSCHULSKY’S. The standard ratios in the holotype of *C. rostratus* are as follows: PW/HW 1.04, PW/PL 1.28, PW/PA 1.52, PW/PB 1.52, PB/PA 1.00, EW/PW 1.42, EL/EW 1.66. The body is lutreous and the colour, especially of appendages, is darker than in the type specimens of *C. laticollis*, but this must be the discoloration caused by fungi.

JEANNEL was certainly right in stating in his description of *C. laticollis* that this species is “relativement peu déprimé” and that the elytra are “peu convexes, mais non aplatis.” It is a relatively dark-coloured species, its body being concolorously dark chestnut brown or having somewhat brownish elytral disc. The standard ratios in the type series of *C. laticollis* are as follows: PW/HW 1.03–1.09 (M 1.05), PW/PL 1.29–1.36 (M 1.33), PW/PA 1.50–1.59 (M 1.54), PW/PB 1.51–1.58 (M 1.54), PB/PA 0.97–1.05 (M 1.00), EW/PW 1.33–1.42 (M 1.36), EL/EW 1.60–1.67 (M 1.64).

JEANNEL’S description and illustration of the male genitalia are not very accurate for this species. I have re-examined the genital slide of the holotype of *C. laticollis*, and have also examined freshly dissected male genitalia of one of its paratypes. The aedeagus is not arcuate and almost parallel-sided for the most part in lateral view, not “peu à peu amincie jusqu’à l’orifice basal,” and bears a fine coiled copulatory piece inside the inner sac.

Type depositary. The holotype of *C. rostratus* MOTSCHULSKY is deposited in the collection of the Zoologicheskij Muzej, Moskovskogo Gosudarstvennogo Universiteta im. M. V. Lomonosova, Moscow; that of *C. laticollis* JEANNEL is deposited in the collection of the Laboratoire d’Entomologie, Muséum National d’Histoire Naturelle, Paris.

Specimens examined. 1 ♀ (holotype of *C. rostratus* MOTSCHULSKY), Isthme de Panama, V. DE MOTSCHULSKY; 3 ♂♂, 2 ♀♀ (holotype and paratypes of *C. laticollis* JEANNEL), Honda, Colombia (N^{le} Grenade), 23–VIII~11–IX–1877, Otto THIEME leg.

Notes. A dissected male specimen in the collection of the Paris Museum, which

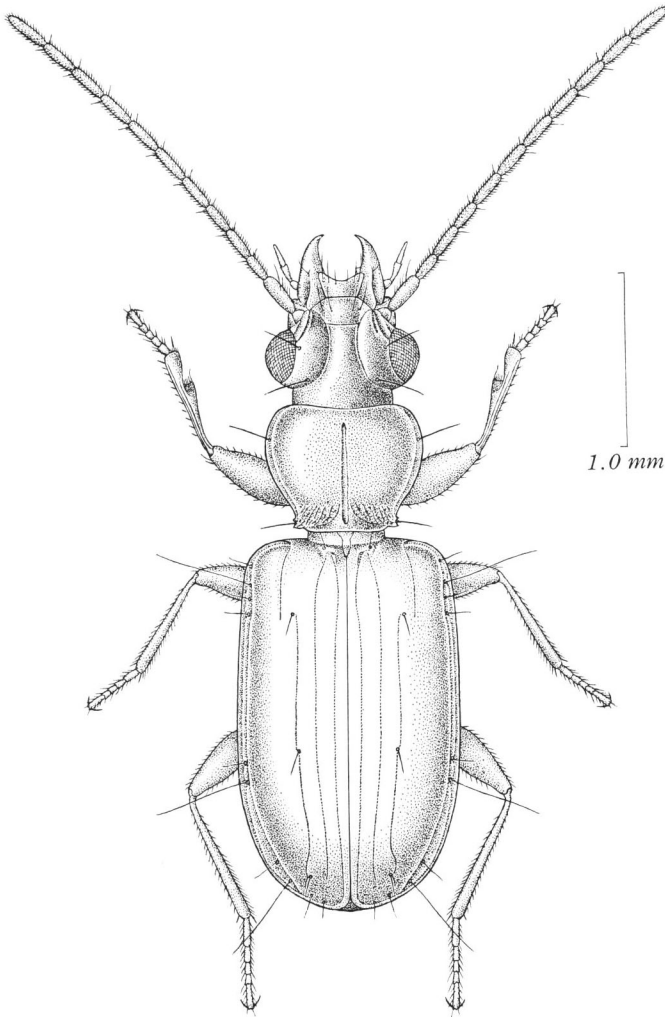


Fig. 1. *Cnides rostratus* MOTSCHULSKY, ♀ holotype, from the Isthmus of Panama.

bears a label inscribed with the name "*rostratus* Mots." in BATES' handwriting, also bears a label "*Cnides laticollis* n." in JEANNEL's handwriting. This specimen must be the holotype of *C. laticollis*, and I put a red holotype label to it. Strangely, only the label attached to its genital slide is inscribed with "*Cnides rostratus* Mots. N. Grenade" in JEANNEL's handwriting; a holotype label and an inscription "*Cnides laticollis* Jeannel, sp. nov." were added to the slide. The paratypes were not so labelled by JEANNEL, but since he expressly stated in his description that there were "plusieurs exemplaires" of this species "dans la collection R. Oberthur," I put paratype labels to all the remaining specimens.

Cnides jeanneli S. UÉNO, sp. nov.

Cnides rostratus: JEANNEL, 1920, Ann. Mag. nat. Hist., (IX), 5, p. 99; 1927, Abeille, Paris, 33, pp. 62, 63, figs. 419–421; 1939, Rev. fr. Ent., 6, p. 87; 1958, Ent. Arb. Mus. Frey, Tutzing, 9, pp. 734, 735. — CASALE & LANEYRIE, 1982, Mém. Biospéol., 9, p. 34, fig. 1.

The realization that *C. rostratus* MOTSCHULSKY is identical with *C. laticollis* JEANNEL requires a new name for the Colombian species regarded by JEANNEL as *C. rostratus*. This was repeatedly described and illustrated, so that there seems to be no need of redescribing it. Its diagnostic features can be summarized as: 1) large size (4.00–4.20 mm from the apical margin of clypeus to the apices of elytra), 2) small head, which is much narrower than prothorax, 3) peculiarly shaped prothorax, which is strongly contracted at apex (contrary to JEANNEL's account that the pronotum is "très rétréci à la base qui est nettement plus étroite que le bord antérieur"), with the sides very strongly rounded in front and very briefly sinuate just before hind angles, and 4) rather irregular microsculpture. The standard ratios are: PW/HW 1.15 in the holotype, 1.19 in the paratype, PW/PL 1.38 in the holotype, 1.31 in the paratype, PW/PA 1.71 in both the holotype and paratype, PW/PB 1.52 in both the holotype and paratype, PB/PA 1.13 in both the holotype and paratype, EW/PW 1.45 in the holotype, 1.46 in the paratype, EL/EW 1.65 in both the holotype and paratype.

Type series. Holotype: ♀, paratype: 1 ♀, Cali, Colombia, ROSENBERG leg. Both deposited in the collection of the Department of Entomology, British Museum (Natural History), London.

References

- CASALE, A., & R. LANEYRIE, 1982. Trechodinae et Trechinae du monde. Tableau des sous-familles, tribus, séries phylétiques, genres, et catalogue général des espèces. *Mém. Biospéol.*, 9: i+1–226.
- CSIKI, E., 1928. Carabidae: Mormolycinae, Harpalinae II. In JUNK, W., & S. SCHENKLING (eds.), *Coleopterorum Catalogus*, pars 98 (pp. 227–345). Berlin, W. Junk.
- JEANNEL, R., 1920. Sur quelques Trechinae [Coleoptera, Carabidae] du British Museum. *Ann. Mag. nat. Hist.*, (IX), 5: 98–112.
- 1927. Monographie des Trechinae. Morphologie comparée et distribution géographique d'un groupe de Coléoptères. (Deuxième livraison). *Abeille, Paris*, 33: 1–592.
- 1939. Trois Trechinae nouveaux. *Rev. fr. Ent.*, 6: 86–90.
- 1958. Sur quelques Trechitae de l'Amérique du Sud (Coleoptera). *Ent. Arb. Mus. Frey, Tutzing*, 9: 721–737.
- MOTSCHULSKY, V. DE, 1862. Remarques sur la collection d'insectes de V. DE MOTSCHULSKY. *Étud. ent.*, *Dresde*, 11: 15–55.
- PUTZEYS, J., 1870. Trechorum oculatorum monographia. *Ent. Ztg., Stettin*, 31: 7–48, 145–201, pl. 1.