

## Type Material of a Pine Web-spinning Sawfly, *Acantholyda sasakii* (Yano, 1916) (Hymenoptera, Pamphiliidae)

**Akihiko Shinohara**

Department of Zoology, National Museum of Nature and Science,  
4-1-1 Amakubo, Tsukuba, Ibaraki, 305-0005 Japan  
E-mail: shinohar@kahaku.go.jp

(Received 1 June 2013; accepted 12 July 2013)

**Abstract** The type material of *Acantholyda sasakii* (Yano, 1916), once thought to be lost, has been found in the collection of the University Museum, the University of Tokyo, Tokyo. A lectotype is designated for the taxon. An examination of the lectotype has shown that the current interpretation of the taxon is correct.

**Key words:** Hymenoptera, Pamphiliidae, *Acantholyda sasakii*, lectotype designation.

*Acantholyda sasakii* (Yano, 1916) is a conifer-feeding, web-spinning sawfly occurring in Honshu, Japan (Shinohara, 1995, 2001). Sasaki (1901) first described this species as “*Tenthredo pratensis*, F. var.?” without giving the number of specimens he examined. Yano (1916) pointed out that Sasaki’s species differed from “*Tenthredo pratensis* F.” [= *Tenthredo stellata* Christ, = *Acantholyda* (*Itycorsia*) *posticalis pinivora* Enslin,

1918] from Europe and named it “*Lgda* [sic] *sasakii*”. Takeuchi (1930) transferred it to the genus *Acantholyda* Costa, 1894. Although Sasaki’s original material has never been studied, as it was thought to be lost (Shinohara, 1995), the species is quite characteristic and easily recognized by the features given by Sasaki (1901).

Chûjirô Sasaki (1857–1938) was a professor of Entomology at the College of Agriculture,

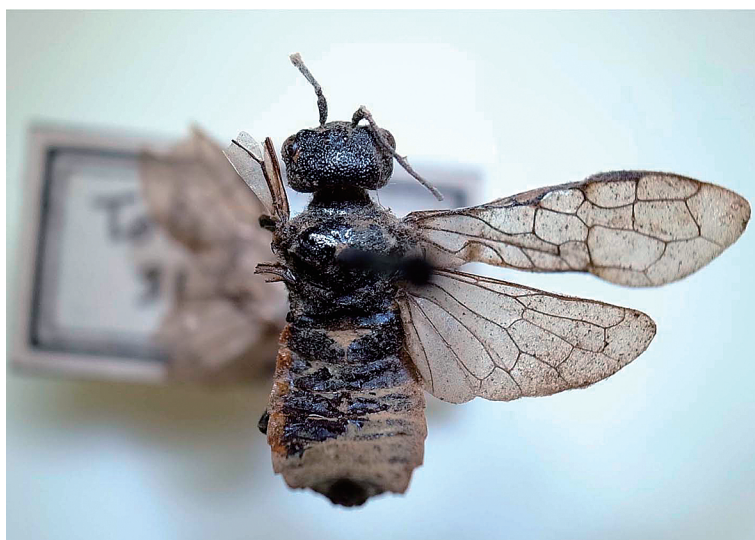


Fig. 1. Lectotype of *Lyda sasakii* Yano, 1916.

Tokyo Imperial University (currently the University of Tokyo), and his insect collection is supposed to have been deposited in the college. In the collection of the University Museum, the University of Tokyo, Mr. H. Nagase (Kamakura) recently found two very old specimens of pamphiliid sawflies and showed them to me. One is a female of *A. sasakii* labeled "Tokyo, 31. IV. 1899" (Fig. 1) and the other is a female of *Acantholyda posticalis posticalis* (Matsumura, 1912). The former perfectly agrees with Sasaki's (1901) description and I believe this specimen belongs to Sasaki's original material that he identified as "*Tenthredo pratensis*, F. var.?" and thus it is a syntype of *Lyda sasakii* Yano, 1916. The other specimen, a female *A. posticalis posticalis*, does not agree with the description and is not a syntype of *Lyda sasakii*. For the sake of stability in nomenclature, I am here designating the female of *A. sasakii* labeled "Tokyo, 31. IV. 1899" (Fig. 1), the only known syntype, as the lectotype of *Lyda sasakii* Yano, 1916.

An examination of the lectotype has revealed that the current interpretation of the taxon is correct. The lectotype is in poor condition (Fig. 1). It is mostly covered with dead mold, the apices

of the antennae and the right fore tibia and tarsus are missing, and the left wings are detached from the thorax, with only broken parts glued on a small triangular label.

I thank Mr. H. Nagase (Kamakura) for his helpful information, Dr. M. Yago (University Museum, University of Tokyo, Tokyo) for the loan of the material, and Dr. David R. Smith (United States Department of Agriculture, Washington, D.C.) for his helpful comments on the manuscript.

### References

- Sasaki, C. 1901. [Insect Pests of Trees in Japan, 1.] 190 pp. Keigyosha, Tokyo. (In Japanese.)
- Shinohara, A. 1995. Notes on a pine web-spinning sawfly *Acantholyda sasakii* (Hymenoptera, Pamphiliidae). *Memoirs of the National Science Museum, Tokyo*, (28): 165–167.
- Shinohara, A. 2001. Conifer-feeding webspinning sawflies of the genus *Acantholyda* (Hymenoptera, Pamphiliidae) of Japan. *Species Diversity*, 6: 23–63.
- Takeuchi, K. 1930. A revisional list of the Japanese Pamphiliidae, with descriptions of nine new species. *Transactions of Kansai Entomological Society*, 1: 3–16.
- Yano, M. 1916. [Scientific names of pine sawflies.] *Insect World, Gifu*, 20: 179–181. (In Japanese.)