

Inventory Studies on the Subfamily Pselaphinae (Coleoptera, Staphylinidae) of Myanmar Part 1: A Checklist of Species

Shûhei Nomura¹ and Mu Mu Aung²

¹Department of Zoology, National Museum of Nature and Science,
4–1–1 Amakubo, Tsukuba, Ibaraki 305–0005, Japan

E-mail: nomura@kahaku.go.jp

²Forest Research Institute, Forest Department, Ministry of Natural Resources and
Environmental Conservation, Yezin, Nay Pyi Taw, Myanmar

E-mail: mumuaung85@gmail.com

(Received 24 April 2020; accepted 24 June 2020)

Abstract The pselaphine fauna of Myanmar is reviewed. One hundred and twenty-one species of the subfamily Pselaphinae and their distributions are listed.

Key words: Pselaphinae, Staphylinidae, inventory, taxonomy, check list, Myanmar.

1) A historical review of the pselaphine fauna of Myanmar

The pselaphine fauna of Myanmar has been studied since nineteenth century. Motschulsky (1851) described 53 pselaphine species from “Ind. Or.” abbreviated from “Indes orientales”, which is known to indicate Tenasserim, South Myanmar. This work was done on the basis of Helfer’s Collection originally preserved in the Natural History Museum, Prague, Czech (NMP). These pselaphine specimens were collected at Tenasserim in the southern part of Myanmar.

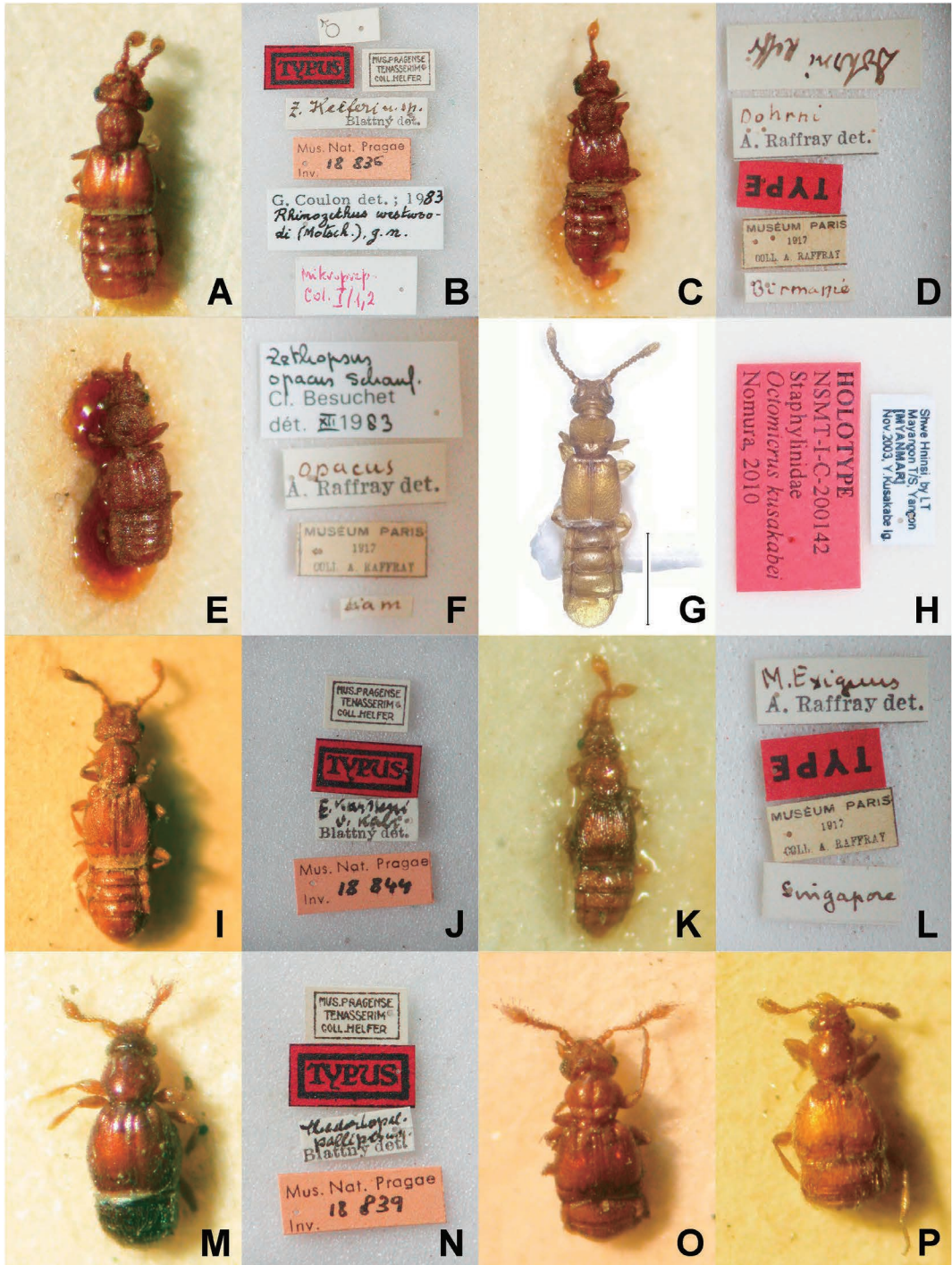
More than 70 years later, Blatný (1925) described 8 new genera, 41 new species on the basis of the same collection. From the Blatný’s taxa, a new species of a new genus, *Microphthartus luridus* was excluded from pselaphines, because the new genus was synonymous with the genus *Edaphus* of the subfamily Euaesthetinae. Additionally, the other five new genera were synonymized with the known genera of Pselaphinae. Two genera, *Philotrimium* (Euplectitae) and

Maya (Goniaceritae) are still valid.

L. W. Schaufuss (1877) described 29 pselaphine species from Bangkok, Thailand. Blatný (1925) recorded some of the Schaufuss’s species also from Burma on the basis of Helfer’s Collection. L. W. Schaufuss (1882, etc.) and A. Raffray (1883, etc.) described some pselaphine species from Burma (= Myanmar). However, the detail information of the type localities is unknown.

In Besuchet (1986), four genera defined by Blatný (1925) and one genus by Motschulsky (1851) were synonymized as follows: *Raffrayella* Blatný, 1925 was synonymized with *Batraxis* Reitter, 1881; *Hermiella* Blatný, 1925 with *Odontalgus* Raffray, 1877; *Indiella* Blatný, 1925 with *Sognorus* Reitter, 1881; *Glyptosoma* Motschulsky, 1851 with *Tmesiphorus* Le Conte, 1849; and *Novissimus* Blatný, 1925 with *Tyrus* Aubé, 1833.

Besuchet (1999) suggested that three species of the genus *Metaxis* Motschulsky, 1851 described from Tenasserim, Myanmar as “Ind. Or.” should be combined with the genus *Tyrus*. *Novissimus helferi* Blatný, 1925 was synonymized with *Tyrus corpulentus* (Motschulsky,



1851) described as a species of *Metaxis* by the same paper. Besuchet (2008) reviewed some genera and species of the subfamily Pselaphinae, but no correction was provided for pselaphine fauna of Myanmar.

S. A. Kurbatov and G. Cuccodoro revised the genus *Pareuplectops* established by Jeannel (1957) belonging to the tribe Proterini (supertribe Goniaceritae). As the result, they synonymized *P. novissimus* with *P. tenasserimi*, both of which were described by Blattný (1925) as members of the genus *Epiplectus* Raffray (Euplectitae, Trichonychini).

Nomura (2004) reported two species from Yangon on the basis of the specimens collected by Mr. Yoshiyasu Kusakabe.

Nomura and Idris (2008) recorded twelve new distributions of pselaphine species from Yangon on the basis of Kusakabe's Collection.

Nomura (2010) described *Octomicrus kusakabei* from Yangon, which was first species of the tribe Dimerini from Myanmar.

Recently, Yin & Li (2015) described a new species, *Smetanabatrus ghecu* from Carin Asciiui Ghecù, Shan State, which was also recorded from Doi Suthep, Thailand by Yin & Cuccodoro (2018).

After the works shown above, more than one hundred species of the subfamily Pselaphinae have been known from Myanmar. In the present study, correct scientific names of these species, references and the recorded localities are herein listed up.

2) Abbreviations of depository

The type and identified specimens shown in

Figs. 1–4 are deposited in the following museums, in which the abbreviations are shown in parentheses.

Museum National d'Histoire Naturelle, Paris, Raffray Collection (MNHN)

National Museum of Prague, Czech, Natural History, Helfer Collection (NMP)

National Museum of Nature and Science, Tsukuba, Japan (NMNS)

3) A checklist of the pselaphine species known from Myanmar

Supertribe EUPLECTITAE

Tribe Bythinoplectini

Subtribe Bythinoplectina

Neozethopsus brachyurus (Motschulsky, 1851: 500) Tenasserim ("Ind. or.", as *Euplectus*).

Neozethopsus nonplusulta (Blattný, 1925: 183) Tenasserim (Blattný, 1925).

Rhinozethus helferi (Blattný, 1925: 184) Tenasserim (Blattný, 1925) (Fig. 1A–B).

Zethopsus dohrni Raffray, 1883: 248 Birmanie (Fig. 1C–D).

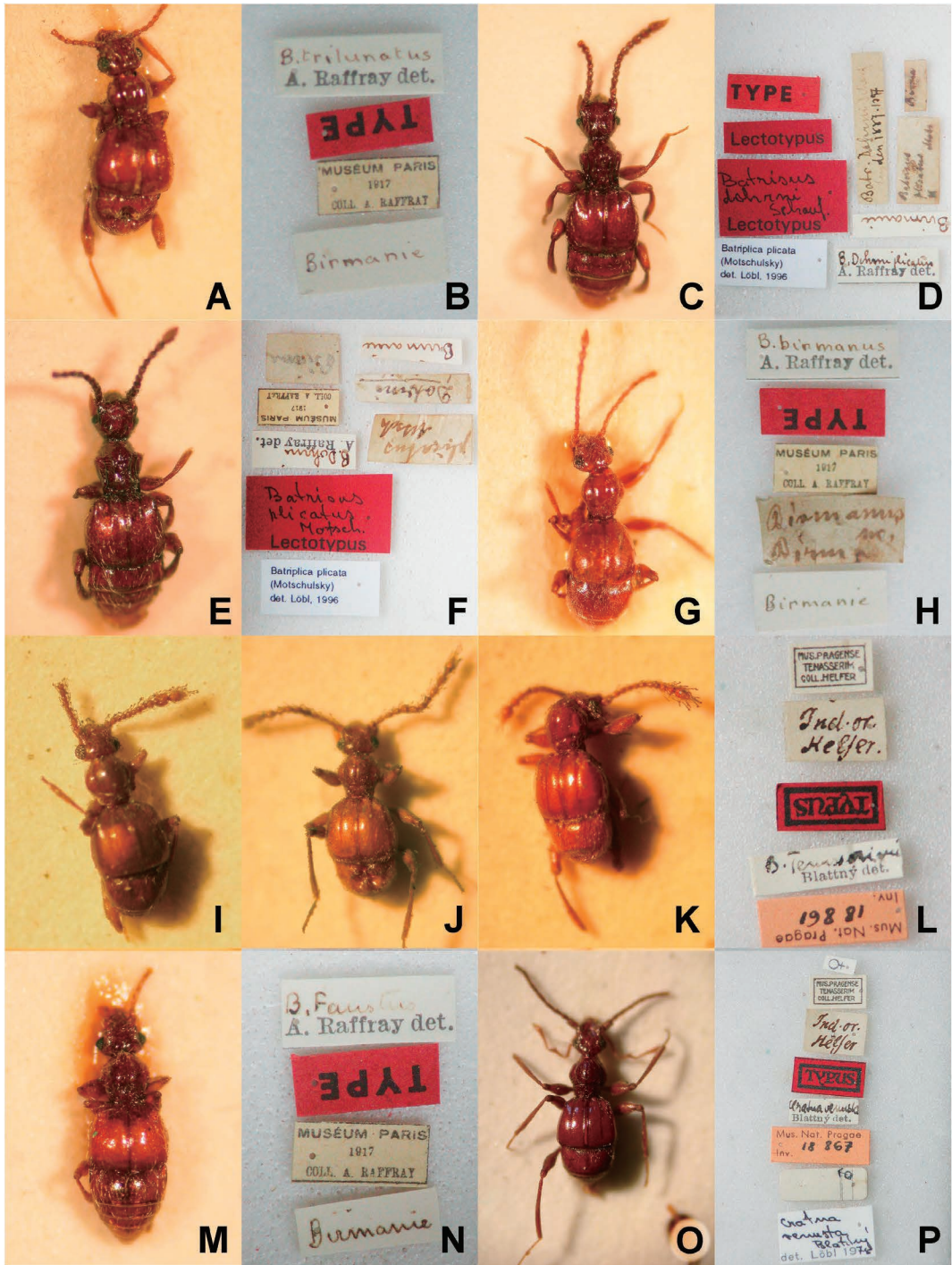
Zethopsus infuscatus Motschulsky, 1851: 500 Tenasserim ("Ind. or.", as *Euplectus*).

Zethopsus imperfectus Blattný, 1925: 184 Tenasserim (Blattný, 1925).

Zethopsus opacus Schaufuss, 1887: 12 Tenasserim (Blattný, 1925); Bangkok, Thailand (Fig. 1E–F). (= *Zethopsus westwoodi* Schaufuss, 1882: 113 synonymised by Coulon, 1989).

Pachyzethopsus blattnyi Coulon, 1989: 194 Tenasserim.

Fig. 1. Type and identified specimens of pselaphine species from Myanmar 1/4. A. syntype (NMP) of *Zethopsus helferi* Blattný, 1925 (= *Rhinozethus helferi* (Blattný, 1925)); B. ditto, type and identification labels; C. *Zethopsus dohrni* Raffray, 1883, syntype (MNHN); D. ditto, type labels; E. *Zethopsus opacus* Schaufuss, 1887 from Siam, identified by A. Raffray (MNHN); F. ditto, identification labels; G. *Octomicrus kusakabei* Nomura, 2010, holotype (NMNS); H. ditto, type labels; I. *Euplectus kali* Blattný, 1925, syntype (NMP); J. ditto, type labels; K. *Microplectus exiguus* Raffray, 1898 from Singapore, syntype (MNHN); L. ditto, type labels; M. *Chaetorhopalus pallipes* Blattný, 1925, syntype (NMP); N. ditto, type labels; O. *Euplectodina hipposideros* (Schaufuss, 1877), identified by Raffray? (MNHN); P. *Philotrimium abdominale* (Motschulsky, 1851), identified by Blattný (NMP).



Tribe Dimerini

Octomicrus (Octomicrus) kusakabei Nomura, 2010: 235 Yangon (Fig. 1G–H).

Tribe Euplectini

Euplectus caligula Blattný, 1925: 188 Tenasserim.

Euplectus elongatus Motschulsky, 1851: 501 Tenasserim (“Ind. or.”).

Euplectus kali Blattný, 1925: 189 Tenasserim (Fig. 1I–J).

Euplectus pulcher Motschulsky, 1851: 499 Tenasserim (“Ind. or.”).

Euplectus uniformis Blattný, 1925: 188 Tenasserim.

Tribe Trichonychini

Subtribe Bibloplectina

Microplectus exiguus Raffray, 1898: 264 Tenasserim (Blattný, 1925); Tenasserim (Fig. 1K–L); Singapore.

Subtribe Bibloporina

Chaetorhopalus pallipes Blattný, 1925: 186 Tenasserim (Fig. 1M–N).

Subtribe Panaphantina

Euplectodina hipposideros (Schaufuss, 1877: 12) Tenasserim (Blattný, 1925), Yangon (Nomura, 2004); Bangkok, Thailand, Vietnam, Java, Sumatra (Fig. 1O).

Euplectodina brevisculus (Motschulsky, 1851:

500) Tenasserim (“Ind. or.”, as *Euplectus*).

Subtribe Trimiina

Philotrimium abdominale (Motschulsky, 1851: 496) Tenasserim (“Ind. or.”, as *Trimium*) (Fig. 1P).

Supertribe Batrisitae

Tribe Batrisini

Subtribe Batrisina

Arthromelus trilunatus (Raffray, 1896: 245) Birmanie (as *Batrisocenus*) (Fig. 2A–B).

Batriplica plicata (Motschulsky, 1851: 489) Tenasserim (“Ind. or.”, as *Batrisus*) (Fig. 2C–D). (= *Batriplica dohrni* Schaufuss, 1887: 137 *Birmanie*) (Fig. 2E–F).

Batriplica fossulata (Motschulsky, 1851: 489) Tenasserim (“Ind. or.”, as *Batrisus*).

Batrisocenus anticus Blattný, 1925: 197 Tenasserim.

Batrisocenus anthicus (Motschulsky, 1851: 487) Tenasserim (“Ind. or.”, as *Batrisus*).

Batrisocenus aubei Blattný, 1925: 197 Tenasserim.

Batrisocenus birmanus (Schaufuss, 1882: 395) Birmanie (Fig. 2G–H).

Batrisocenus franci Blattný, 1925: 200 Tenasserim.

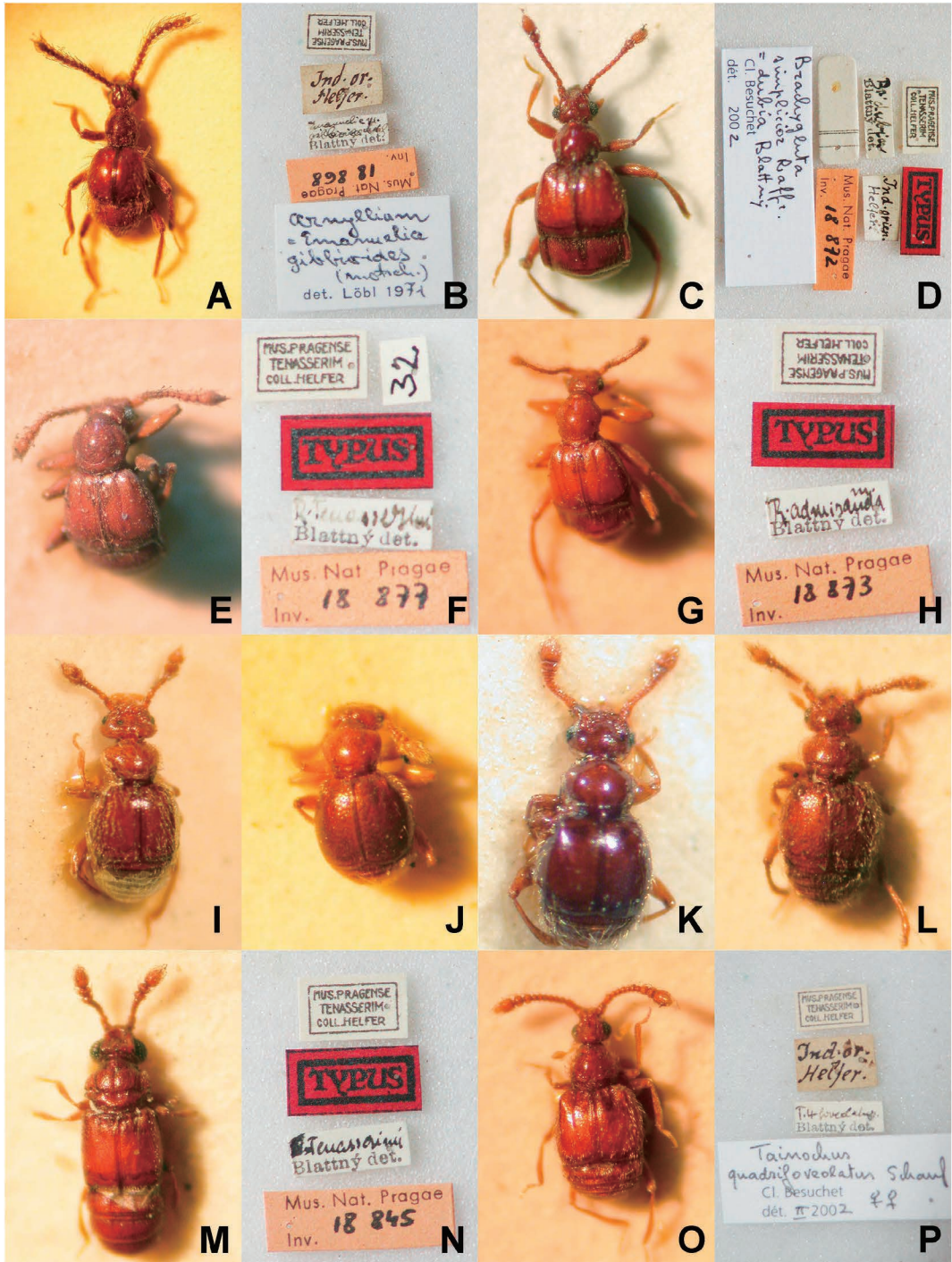
Batrisocenus lecontei (Motschulsky, 1851: 486) Tenasserim (“Ind. or.”, as *Batrisus*).

Batrisocenus macrocerus (Motschulsky, 1851: 487) Tenasserim (“Ind. or.”, as *Batrisus*).

Batrisocenus mariae Blattný, 1925: 201 Tenasserim.

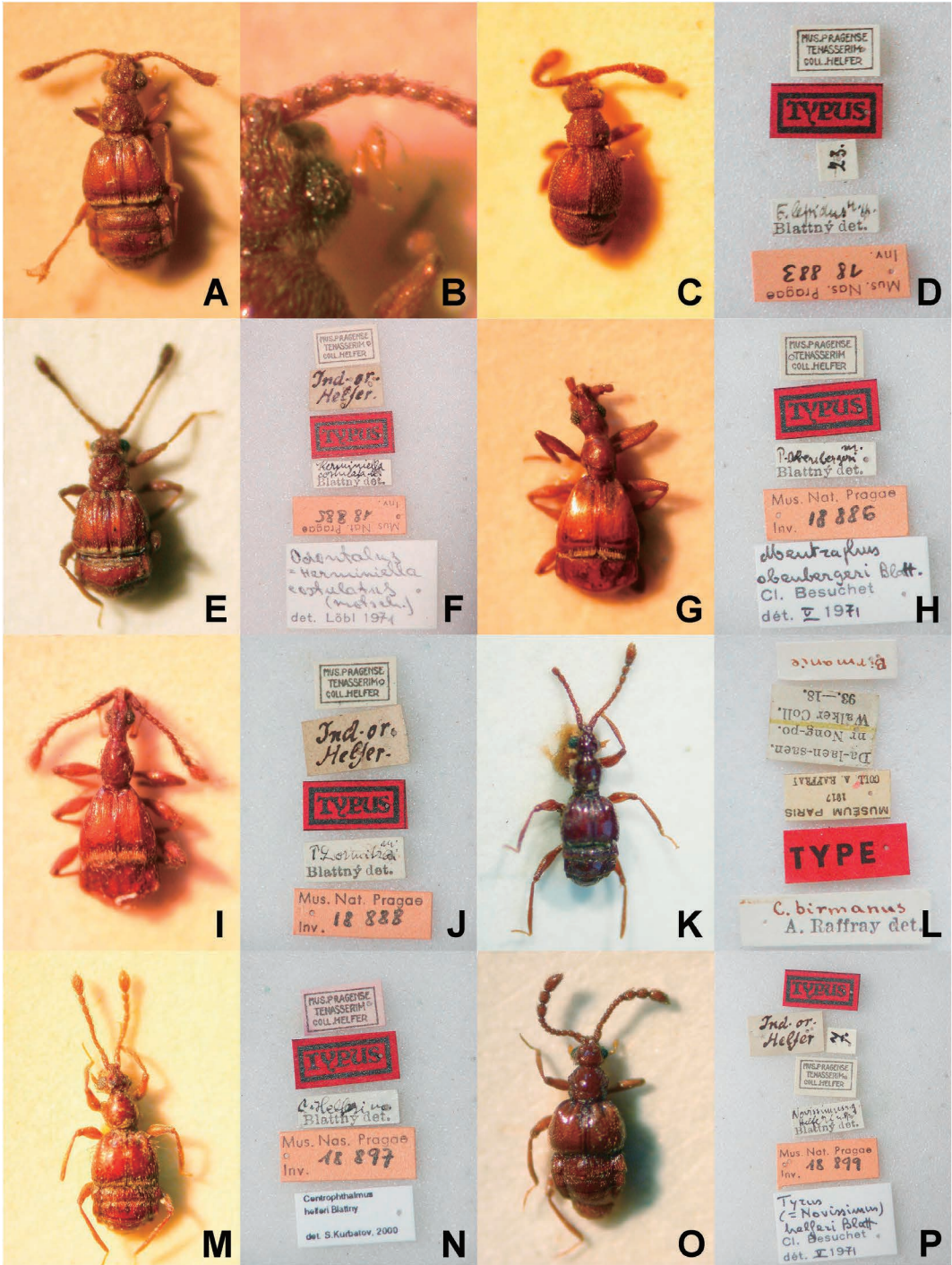
Batrisocenus nitidulus (Motschulsky, 1851: 489)

Fig. 2. Type and identified specimens of pselaphine species from Myanmar 2/4. A. *Arthromelus trilunatus* (Raffray, 1896), syntype (MNHN); B. ditto, type labels; C. *Batriplica plicata* (Motschulsky) lectotype (?) designated by I. Löbl (MNHN); D. ditto labels; E. *Batriplica dohrni* (Schaufuss, 1887) identified by A. Raffray, as the lectotype of *Batriplica plicata* (Motschulsky, 1851) designated by I. Löbl (MNHN); F. ditto, labels; G. *Batrisocenus birmanus* (Schaufuss, 1882), syntype (MNHN); H. ditto, type labels; I. *Batrisocenus nitidulus* (Motschulsky, 1851), identified specimen by Blattný (NMP); J. *Batrisocenus reichenbachi* (Motschulsky, 1851), identified specimen by Blattný (NMP); K. *Batrisocenus tenasserimi* Blattný, 1925, syntype (NMP); L. ditto, type labels; M. *Batrisocenus faustus* (Raffray, 1896), syntype (MNHN); N. ditto, type labels; O. *Cratina venusta* Blattný, 1925, syntype (NMP); P. ditto, type labels.



- Tenasserim (“Ind. or.”, as *Batrisus*) (Fig. 2I).
Batrisocenus quaestus (Schaufuss, 1887: 139) Birmanie.
- Batrisocenus reichenbachii* (Motschulsky, 1851: 486) Tenasserim (“Ind. or.”, as *Batrisus*) (Fig. 2J).
Batrisocenus tenasserimi Blattný, 1925: 199 Tenasserim (Fig. 2K–L).
Batrisocenus vishnu Blattný, 1925: 198 Tenasserim.
- Batrisodes bucephalus* (Motschulsky, 1851: 487) Tenasserim (“Ind. or.”, as *Batrisus*).
Batrisodes carinatus Blattný, 1925: 190 Tenasserim.
Batrisodes grandis (Motschulsky, 1851: 489) Tenasserim (“Ind. or.”, as *Batrisus*).
Batrisodes helferi (Motschulsky, 1851: 489) Tenasserim (“Ind. or.”, as *Batrisus*).
Batrisodes kavinae Blattný, 1925: 193 Tenasserim.
Batrisodes plicatus Blattný, 1925: 194 Tenasserim.
Batrisodes sculpticollis (Motschulsky, 1851: 489) Tenasserim (“Ind. or.”, as *Batrisus*).
Batrisodes vavrai Blattný, 1925: 191 Tenasserim.
Batrisodes ventralis (Motschulsky, 1851: 484) Tenasserim (“Ind. or.”, as *Batrisus*).
Batristerus faustus (Raffray, 1896: 237) Birmanie (Fig. 2M–N).
Cratna venusta Blattný, 1925: 203 Tenasserim (Fig. 2O–P).
Physomerinus femoralis (Motschulsky, 1851: 486) Tenasserim (“Ind. or.”, as *Batrisus*).
Smetanabatrus ghecu Yin et Li, 2015: 377 Carin Asciuii Ghecù.
- Supertribe Goniaceritae
 Tribe Arnyllini
- Harmophorus gibbioides* Motschulsky, 1851: 490 Tenasserim (“Ind. or.”) (as *Emanuella* in Blattný, 1925*) (Fig. 3A–B).
- Tribe Brachyglutini
 Subtribe Brachyglutina
- Batraxis raffrayana* (Blattný, 1925: 205) Tenasserim (as *Raffrayella* in Blattný, 1925), Yangon (Nomura and Idris, 2008).
Brachygluta dubia Blattný, 1925: 205 Tenasserim (Fig. 3C–D).
Eupines sphaerica (Motschulsky, 1851: 492) Tenasserim (“Ind. or.”, as *Bryaxis*); Vietnam, Sri Lanka, India, Singapore, Java, Sumatra, Borneo, Sulawesi, New Guinea, Japan.
Reichenbachella budha (Raffray, 1891: 487) Tenasserim (Blattný, 1925), Yangon (Nomura, 2008); Vietnam, Thailand “Siam”.
Reichenbachella mandibularis Jeannel, 1960: 437 Kyankian.
Reichenbachia areolata Raffray, 1892: 493 Tenasserim (Blattný, 1925); N Sumatra.
Reichenbachia baumeisteri Schaufuss, 1877: 7 Tenasserim (Blattný, 1925); Bangkok, Thailand, Vietnam.
Reichenbachia castelnaui Raffray, 1891: 489 Tenasserim (Blattný, 1925); Thailand “Siam”.
Reichenbachia cordata Schaufuss, 1877: 9 Tenasserim (Blattný, 1925); Bangkok, Thailand.
Reichenbachia fulva Schaufuss, 1887: 292 Birmanie, Tenasserim (Blattný, 1925).
Reichenbachia kali Blattný, 1925, 1 male: 206

Fig. 3. Type and identified specimens of pselaphine species from Myanmar 3/4. A. *Harmophorus gibbioides* Motschulsky, 1851, identified specimen (NMP) by Blattný; B. ditto, labels; C. *Brachygluta dubia* Blattný, 1925, syntype (NMP); D. ditto, type labels; E. *Rybaxis tenasserimi* Blattný, 1925, syntype (NMP); F. ditto, type labels; G. syntype (NMP) of *Reichenbachia admiranda* Blattný, 1925 (= *Trissemus mamilla* (Schaufuss, 1877)); H. ditto, type labels; I. *Sunorfa clavata* (Raffray, 1895), syntype (MNHN); J. ditto, identified specimen (NMP) by Blattný (1925); K. *Sunorfa exsculpta* (Schaufuss, 1877), syntype (MNHN); L. ditto, identified specimen (NMP) by Blattný (1925); M. *Pareuplectops tenasserimi* (Blattný, 1925), syntype (NMP); N. ditto, type labels; O. *Atychodea quadrifoveolata* (Motschulsky, 1851), identified specimen (NMP) by Blattný (1925); P. ditto, identification labels.



- Tenasserim.
Reichenbachia muscorum Raffray, 1904: 161 Tenasserim (Blattný, 1925); Penang, Malaysia.
Reichenbachia nava Raffray, 1904: 156 Tenasserim (Blattný, 1925); Sumatra.
Reichenbachia rufa (Schmidt-Göbel, 1838: 6) Tenasserim (Blattný, 1925); Vietnam, Sri Lanka, India (Calcutta), Thailand, Singapore, Java, Cerebes, Philippines.
Reichenbachia schaufussi Reitter, 1882: 289 Tenasserim (Blattný, 1925); Sumatra, Singapore.
Reichenbachia simplex (Motschulsky, 1851: 491) Tenasserim ("Ind. or.", as *Bryaxis*).
Reichenbachia suturella (Motschulsky, 1851: 491) Tenasserim ("Ind. or.", as *Bryaxis*).
Reichenbachia? brevicornis (Motschulsky, 1851: 493) Tenasserim ("Ind. or.", as *Bryaxis*).
Reichenbachia? dilatata (Motschulsky, 1851: 492) Tenasserim ("Ind. or.", as *Bryaxis*).
Reichenbachia? extensa (Motschulsky, 1851: 494) Tenasserim ("Ind. or.", as *Bryaxis*).
Rybaxis decorata Motschulsky, 1851: 494 Tenasserim ("Ind. or.", as *Bryaxis*).
Rybaxis frici Blattný, 1925: 207 Tenasserim.
Rybaxis tenasserimi Blattný, 1925: 208 Tenasserim (Fig. 3E–F).
Trissemus mamilla (Schaufuss, 1877: 9) Tenasserim (Blattný, 1925), Yangon (Nomura, 2008); Bangkok, Thailand, Vietnam. (= *Reichenbachia admiranda* Blattný, 1925: 206) (Fig. 3G–H).
- Tribe Iniocyphini
 Subtribe Natypleurina
- Maya dilatata* (Motschulsky, 1851: 496) Tenasserim ("Ind. or.", as *Tychus*), Mandaley, near Maymyo (= Pyin Oo Lwin) (Kurbatov *et al.*, 2007).
Morana bidentata Kurbatov, Cuccodoro et Löbl, 2007: 622 East Mandalay, 800m, near Maymyo.
Morana palaung Kurbatov, Cuccodoro et Löbl, 2007: 647 Namhsan, 1,600m, Shan Prov.
Sunorfa clavata (Raffray, 1895: 44) Singapore (as *Bythinomorpha*); Tenasserim (Blattný, 1925) (Fig. 3I–J).
Sunorfa exsculpta (Schaufuss, 1887: 110) Sumatra (as *Bythinomorpha*); Tenasserim (Blattný, 1925) (Fig. 3K–L).
- Tribe Proterini
- Pareuplectops tenasserimi* (Blattný, 1925): 189 Tenasserim (as *Epiplectus*) (Fig. 3M–N). (= *Epiplectus novissimus* Blattný, 1925: 190 synonymised by Kurbatov and Cuccodoro, 2009).
- Tribe Tychini
- Atychodea portentosa* Kurbatov et Sabella, 2008: 33 Bhamo.
Atychodea quadrifoveolata (Motschulsky, 1851: 495) Tenasserim ("Ind. or.", as *Tychus*) (Fig. 3O–P).
- Tribe Cyathigerini
- Plagiophorus paradoxus* Motschulsky, 1851: 496 Tenasserim ("Ind. or.").
- Tribe incertae sedis
- Epiplectus cavifrons* Raffray, 1898: 264: Singa-

Fig. 4. Type and identified specimens of pselaphine species from Myanmar 4/4. A. *Sognorus birmanensis* (Motschulsky, 1851), identified specimen (NMP) by Blattný (1925); B. ditto, maxillary palpus enlarged; C. *Stipesa lepida* (Blattný, 1925), syntype (NMP); D. ditto, type labels; E. *Odontalgus costatus* (Blattný, 1925) (= *Heriminiella costulata* Blattný, 1925), syntype (NMP); F. ditto, type labels; G. *Mentraphus obenbergeri* (Blattný, 1925), syntype (NMP); H. ditto, type labels; I. *Pselaphus dormitzeri* Blattný, 1925, syntype (NMP); J. ditto, type labels; K. *Centrophthalmus birmanus* Raffray, 1904, syntype (MNHN); L. ditto, type labels. M. *Centrophthalmus herferi* Blattný, 1925, syntype (NMP); N. ditto, type labels; O. *Tyrus corpulentus* (Motschulsky, 1851), as syntype of *Novissimus helferi* Blattný, 1925; P. ditto, type labels;

pore; Tenasserim (Blattný, 1925).

Supertribe Pselaphitae
Tribe Ctenistini

- Ctenistes costulatus* Motschulsky, 1851: 481 Tenasserim (“Ind. or.”).
Ctenistes crassicornis Raffray, 1904: 340 Birmanie
Ctenistes globripalpus Schmidt-Göbel, 1838: 14 Yangon (Nomura and Idris, 2008); India (Calcutta).
Ctenistes hindustanus Motschulsky, 1851: 482 Tenasserim (“Ind. or.”), Yangon (Nomura and Idris, 2008).
Ctenistes longicornis Motschulsky, 1851: 482 Tenasserim (“Ind. or.”).
Sognorus birmanensis (Motschulsky, 1851: 481) Tenasserim (“Ind. or.”, as *Ctenistes*; as *Indiella* in Blattný, 1925), Yangon (Nomura and Idris, 2008) (Fig. 4A–B).
Sognorus birmanus (Schaufuss, 1886: 276) Birmanie (as *Enoptostomus*).

Tribe Hybocephalini

- Acmaeonotus motschulskyi* Motschulsky, 1851: 483 Tenasserim (“Ind. or.”).
Hybocephalus minimus Motschulsky, 1851: 482 Tenasserim (“Ind. or.”).
Hybocephalus squamosus Schaufuss, 1882: 355 Birmanie
Mecochelia simplex Motschulsky, 1851: 481 Tenasserim (“Ind. or.”).
Mecochelia impressa Motschulsky, 1851: 481 Tenasserim (“Ind. or.”).
Stipesa aurita (Blattný, 1925: 210) Tenasserim (as *Filiger*).
Stipesa lepida (Blattný, 1925: 210) Tenasserim (as *Filiger*) (Fig. 4C–D).
Stipesa simillima (Blattný, 1925: 210) Tenasserim (Blattný, 1925), Yangon (Nomura and Idris, 2008).

Tribe Odontalgini

- Odontalgus gracilis* Raffray, 1904: 469 Sumatra; Yangon (Nomura and Idris, 2008); Sumatra, Vietnam.
Odontalgus costulatus (Motschulsky, 1851: 481) Tenasserim (“Ind. or.”, as *Ctenistes*; as *Herimiella costulata* in Blattný, 1925: 211) (Fig. 4E–F).

Tribe Pselaphini

- Mentraphus obenbergeri* (Blattný, 1925: 211) Tenasserim (as *Pselaphus*), Yangon (Nomura and Idris, 2008) (Fig. 4G–H).
Pselaphus dormitzeri Blattný, 1925: 212 Tenasserim (Fig. 4I–J).
Pselaphus elegans Motschulsky, 1851: 483 Tenasserim (“Ind. or.”).
Pselaphus uzeli Blattný, 1925: 212 Tenasserim.
Tyraphus pilosus Raffray, 1891: 494 Yangon (Nomura and Idris, 2008); Tonkin, Vietnam.
Tyraphus testaceus (Schaufuss, 1877: 4) Tenasserim (Blattný, 1925); Bangkok, Thailand. (= *T. nitens* Blattný, 1925: 213)

Tribe Tmesiphorini

- Raphitreodes dentimanus* (Raffray, 1890: 211) (as *Raphitreus*) Yangon (Nomura, 2004); Vietnam, Singapore.
Tmesiphorus paulinae (Motschulsky, 1851: 480) Tenasserim (“Ind. or.”, as *Glyptosoma*).
Tmesiphorus raffrayi C. Schaufuss, 1888: 89 (*T. umbrosus* Raffray, 1883: 288) Birmanie

Tribe Tyrini

Subtribe Centrophthalmina

- Centrophthalmus bicolor* Blattný, 1925: 215 Tenasserim.
Centrophthalmus birmanus Raffray, 1904: 374 Birmanie (Fig. 4K–L).
Centrophthalmus herferi Blattný, 1925: 216 Tenasserim (Fig. 4M–N).
Centrophthalmus longicornis Motschulsky, 1851:

- 480 Tenasserim ("Ind. or.").
Centrophthalmus paria Schmidt-Göbel, 1838: 8
 Tenasserim (Blattný, 1925); Calcutta.
Centrophthalmus pilosus Motschulsky, 1851:
 480 Tenasserim ("Ind. or.").
Centrophthalmus punctipennis Schaufuss, 1877:
 21 "Birmanie", Yangon (Nomura & Idris,
 2008); Bangkok, Thailand.
Centrophthalmus thoracicus Motschulsky, 1851:
 480 Tenasserim ("Ind. or.").
Centrophthalmus vladimiri Blattný, 1925: 215
 Tenasserim (Blattný, 1925), Yangon (Nomura
 & Idris, 2008).

Subtribe Tyrina

- Tyrus corpulentus* (Motschulsky, 1851: 490)
 Tenasserim ("Ind. or.", as *Metaxis*). (= *Novis-*
simus herferi Blattný, 1925: 217) (Fig. 4O–P).
Tyrus lativentris (Motschulsky, 1851: 490)
 Tenasserim ("Ind. or.", as *Metaxis*).
Tyrus politus (Motschulsky, 1851: 490) Tenas-
 serim ("Ind. or.", as *Metaxis*).

Total 48 genera, 121 species.

*: Blattný (1925) established a new genus *Emanuelia* for the Motschulsky's species, *Harmophorus gibbioides*. However, Newton and Chandler (1989) treated it as a junior synonym of the genus *Harmophorus*, which was classified as *Batrini*, *incertae sedis* in that paper.

Acknowledgements

We wish to express our hearty thanks to Dr. Zi-Wei Yin of the Shanghai Normal University, China for his critical reading of the manuscript. We are indebted to Mr. Sôichirô Taru of Tokyo University of Agriculture, Kanagawa, Japan for his kind help in searching records. This study was carried out by the integrated research project "Biological Inventory with special attention to Myanmar" initiated by the National Museum of Nature and Science, Japan based on MoU between NMNS and Forest Department, Ministry of Natural Resources and Environmental Conser-

vation, Myanmar. We are grateful to the Myanmar Forest Department, Ministry of Natural Resources and Environmental Conservation for their permission to carry out fieldwork in protected forests, and for their support and collaboration.

4) A list of literatures related to the pselaphine fauna of Myanmar.

- Besuchet, C. 1986. Synonymes et homonyme nouveaux de quelques genres de Psélaphides (Coleoptera). *Revue suisse de Zoologie*, 93(1): 257–264.
 Besuchet, C. 1999. Psélaphides paléarctiques. Notes taxonomiques et faunistiques (Coleoptera Staphylinidae Pselaphinae). *Revue suisse de Zoologie*, 106 (1): 45–67.
 Besuchet, C. 2008. Synonymies et combinaisons nouvelles, revalidations et description de taxa nouveaux de Pselaphinae (Coleoptera: Staphylinidae). *Bulletin de la Société Entomologique Suisse*, 81: 61–82.
 Blattný, I. C. 1925. Revision der Pselaphiden der collection Helfer im National-Museum in Prag. *Sborník entomologického oddělení Národního musea V Praze*, 3 (26): 179–222.
 Coulon, G. 1989. Révision générique des Bythinoplectini Schaufuss, 1890 (= Pyxidicerini Raffray, 1903, syn. nov.) (Coleoptera, Pselaphidae, Farininae). *Mémoires de la Société Royale Belge d'Entomologie*, 34: 1–282.
 Jeannel, R. 1960. Sur les Pselaphides (Coleoptera) de l'Inde septentrionale. *Bulletin of the British Museum (Natural History), Entomology*, 9: 403–456.
 Kurbatov, S. A. and G. Cuccodoro 2009. Revision of Pareuplectops Jeannel and description of a new affiliated genus from Australia (Coleoptera: Staphylinidae: Pselaphinae). *Revue suisse de Zoologie*, 116: 3–29.
 Kurbatov, S. A., G. Cuccodoro and Ivan Löbl 2007. Revision of Morana Sharp and allied genera (Coleoptera: Staphylinidae: Pselaphinae). *Annales Zoologici*, 57: 591–720.
 Kurbatov, S. A. and G. Sabella 2008. Revision of the genus *Atychodea* Reitter with a consideration of the relationships in the tribe Tychini (Coleoptera: Staphylinidae: Pselaphinae). *Transactions of the American Entomological Society*, 134: 23–68.
 Löbl, I. 1975. Revision der Gattung *Cratna* Raffray (Coleoptera, Pselaphidae). *Annales de la Société Suisse de Zoologie et du Muséum d'Histoire Naturelle de Genève*, 82: 563–583.
 Löbl, I. and S. Kurbatov 1996. Revision of the genus *Batriplica* (Coleoptera: Staphylinidae: Pselaphinae). *Entomological Problems*, 27: 141–147.
 Motschulsky, V. 1851. Énumération des nouvelles espèces

- de Coléoptères. Bulletin de la Société Impériale des Naturalistes de Moscou, 24: 479–511.
- Newton, A. and D. S. Chandler 1989. World catalog of the genera of Pselaphidae (Coleoptera). Fieldiana, Zoology, New Series, (53): 1–93.
- Nomura, S. 2004. Records of two pselaphine species (Coleoptera, Staphylinidae, Pselaphinae) from Vietnam and Myanmar. Elytra, Tokyo, 32: 13–14.
- Nomura, S. 2010. A taxonomical Revision of Asian genera and species of the tribe Dimerini (Coleoptera, Staphylinidae, Pselaphinae). Japanese Journal of Systematic Entomology, Matsuyama, 16: 221–247.
- Nomura, S. and A. B. Idris 2008. New records and two new synonyms of pselaphine species (Coleoptera, Staphylinidae; Pselaphinae) from Southeast Asia. Serangga, Bangi, 13: 39–69.
- Raffray, A. 1883. Pselaphides nouveaux ou peu connus. deuxième memoire. Revue d'Entomologie, 2: 229–251.
- Raffray, A. 1891. Voyage de M. E. Simon aux îles Philippines (Mars et Avril 1888). Annales de la Société entomologique de France, 60: 473–496.
- Raffray, A. 1892. Revision des Pselaphides de Sumatra. Annales de la Société entomologique de France, 61: 463–504.
- Raffray, A. 1896. Nouvelles études sur les Psélaphides et les Clavigérides. Annales de la Société entomologique de France, 65: 227–284.
- Raffray, A. 1898. Notes sur les Pselaphides. Revision generique de la tribu des Euplectini. Descriptions d'especes nouvelles. Revue d'Entomologie, 17: 198–273.
- Raffray, A. 1904. Genera et catalogue des Psélaphides. Annales de la Société entomologique de France, 72: 484–604.
- Raffray, A. 1908. Coleoptera. Fam. Pselaphidae. In Wyt-smann, P. ed., Genera Insectorum, 64th fascicule. 487 pp., Rome.
- Raffray, A. 1911. Pselaphidae. In Schenkling, S. ed., Coleopterolum Catalogues, pars 27. W Junk, Berlin, 222 pp.
- Reitter, E. 1882. Versuch einer systematischen Eintheilung der Clavigeriden und Pselaphiden. Verhandlungen des Naturforschenden Vereines in Brünn, 20: 177–211.
- Schaufuss, C. 1888. Catalogues synonymicus Pselaphidarum adhuc descriptarum. Tijdschrift voor Entomologie, 31: 1–104.
- Schaufuss, L. W. 1877. Pselaphiden Siam's. 25 pp., Ferdinand Thomass, Dresden.
- Schaufuss, L. W. 1882. Descriptions d'espèces de Psélaphiens inédits, d'après des Types de Motschulsky conservés à Prague. Bulletin de la Société entomologique de France, 1882: 141–142.
- Schaufuss, L. W. 1886. Beschreibung neuer Pselaphiden aus der Sammlung des Museum Ludwig Salvator. Ein Beitrag zur Fauna Brasiliens, der Kgl. Niederländischen Besitzungen in Indien und Neuhollands. Tijdschrift voor Entomologie, 29: 241–296.
- Schaufuss, L. W. 1887. Beschreibung neuer Pselaphiden aus der Sammlung des Museum Ludwig Salvator. Ein Beitrag zur Fauna Brasiliens, der Kgl. Niederländischen Besitzungen in Indien und Neuhollands. (Fortsetzung.) Tijdschrift voor Entomologie, 30: 91–165.
- Schmidt-Göbel, H. M. 1838. Beitrag zu einer Monographie der Pselaphen, enthaltend neue Species aus Asien. Erste Lieferung. 16 pp., Gottlieb Haase Söhne, Prague.
- Yin, Z.-W. and G. Cuccodoro 2018. Notes on *Smetanabatrus* from Southeast Asia (Coleoptera: Staphylinidae: Pselaphinae). Revue Suisse de Zoologie, 125: 245–248.
- Yin, Z.-W. and L.-Z. Li 2015. A second species of *Smetanabatrus* (Coleoptera: Staphylinidae: Pselaphinae). Revue Suisse de Zoologie, 122: 377–380.